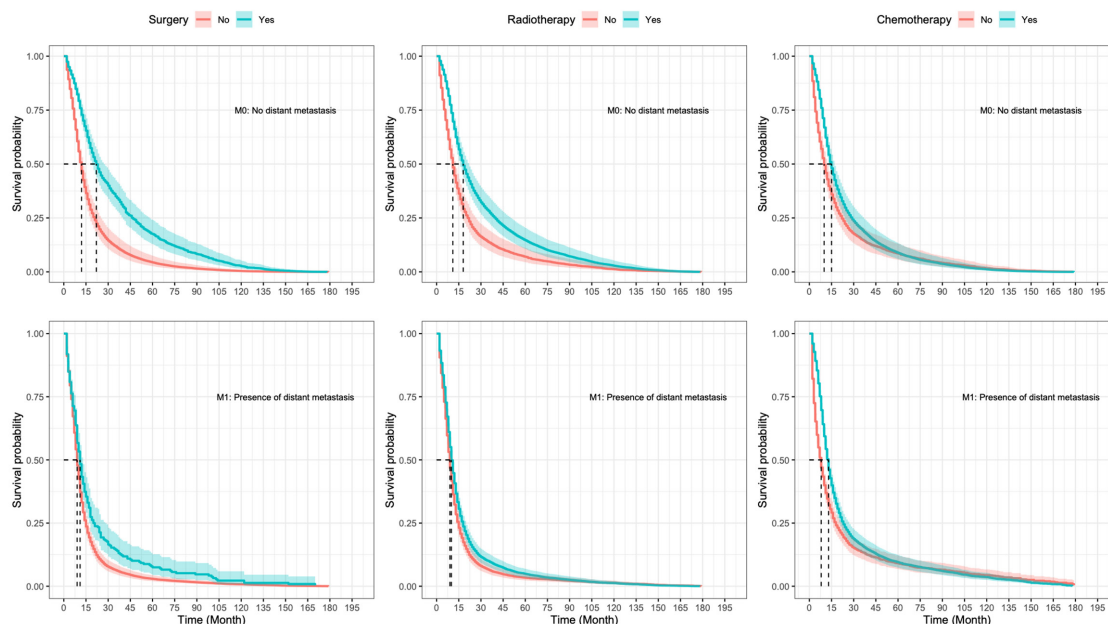


**Figure S1** The calibration plots for predicting survival of SCLC with various models (Cox regression, ST, RSF and GBM). The 45-degree straight line represents the perfect match between the observed (y-axis) and predicted (x-axis) survival probabilities. A closer distance between two curves indicates higher accuracy. SCLC, small cell lung cancer; RSF, random forest for survival; ST, survival tree; GBM, gradient boosting machine.



**Figure S2** Plots of stratified survival probability. The predicting survival of SCLC stratified by treatment types and M categories. SCLC, small cell lung cancer.