

Figure S1 PFS (A) and OS (B) of all KRAS-subtypes; PFS (C) and OS (D) in subtype patients who underwent immunotherapy. PFS, progression-free survival; OS, overall survival; KRAS, Kirsten rat sarcoma homolog.

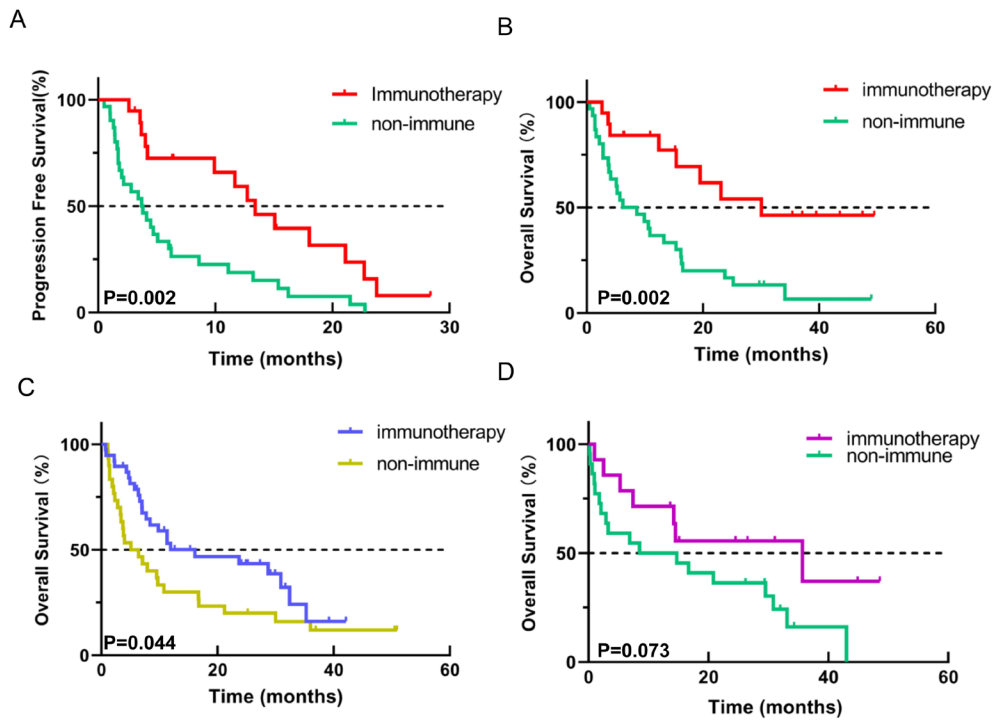


Figure S2 Survival outcomes (A,B) of G12D patients progressed significantly after receiving immunotherapy. Similar results occurred in G12C (C) and G12V (D) patients.

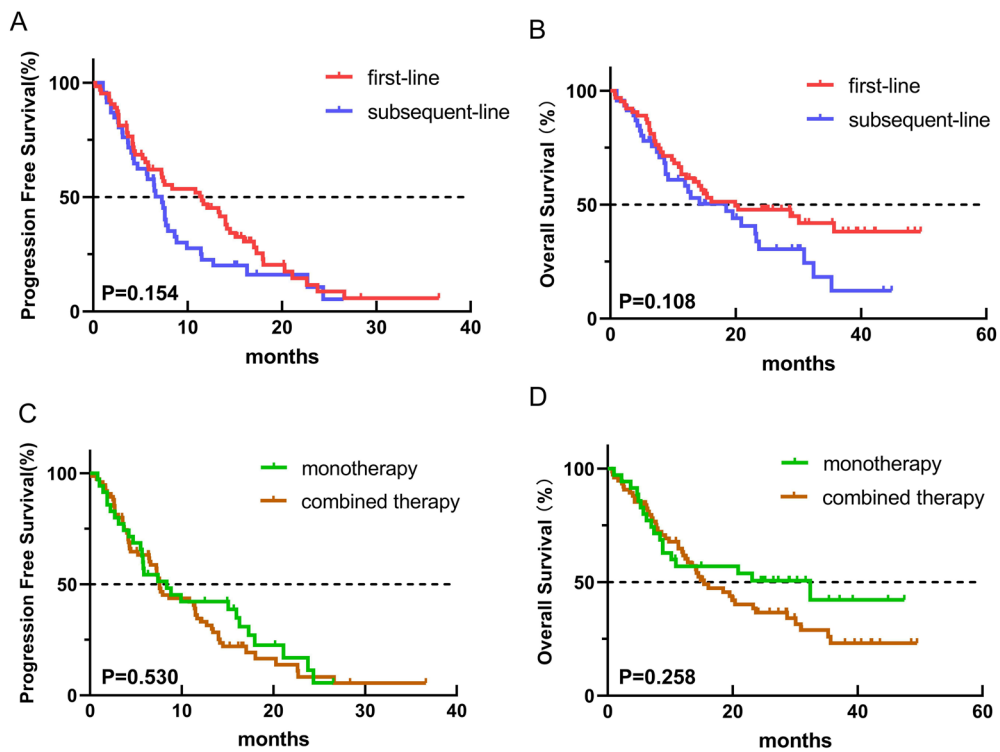


Figure S3 Comparison of PFS (A) and OS (B) of first-line immunotherapy and subsequent ones. And the comparison of PFS (C) and OS (D) of ICI monotherapy and combined therapy also showed a negative result. PFS, progression-free survival; OS, overall survival; ICI, immune checkpoint inhibitor.