

Figure S3 Kaplan-Meier curves and multivariate Cox's forest plots of overall survival based on baseline levels of NSE, stratified by non-small cell lung cancer (NSCLC) and small cell lung cancer (SCLC) patients with brain metastases, respectively.

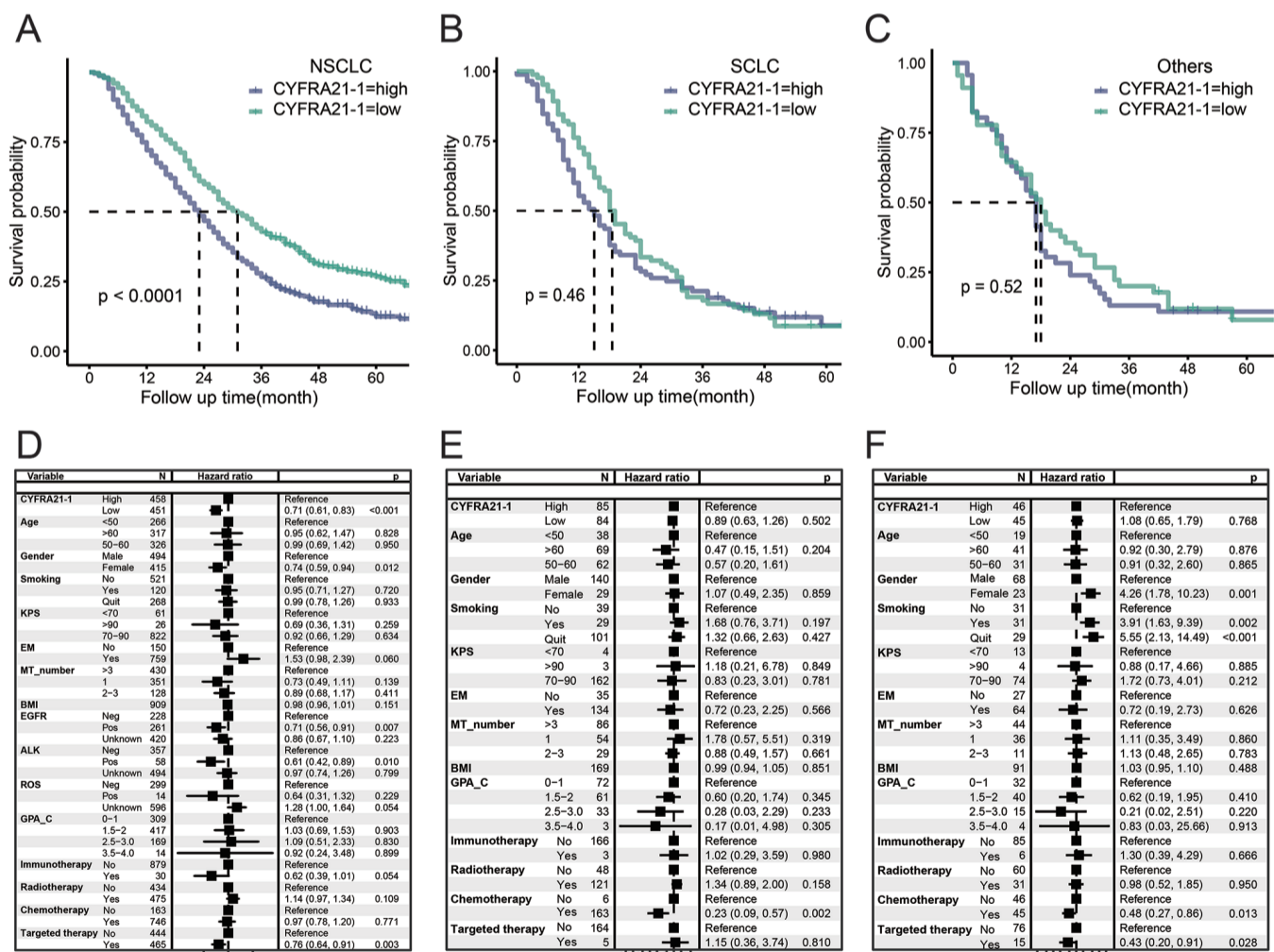


Figure S4 Kaplan-Meier curves and multivariate Cox's forest plots of overall survival based on baseline levels of serum levels of CYFRA21-1, stratified by non-small cell lung cancer (NSCLC) and small cell lung cancer (SCLC) patients with brain metastases, respectively.

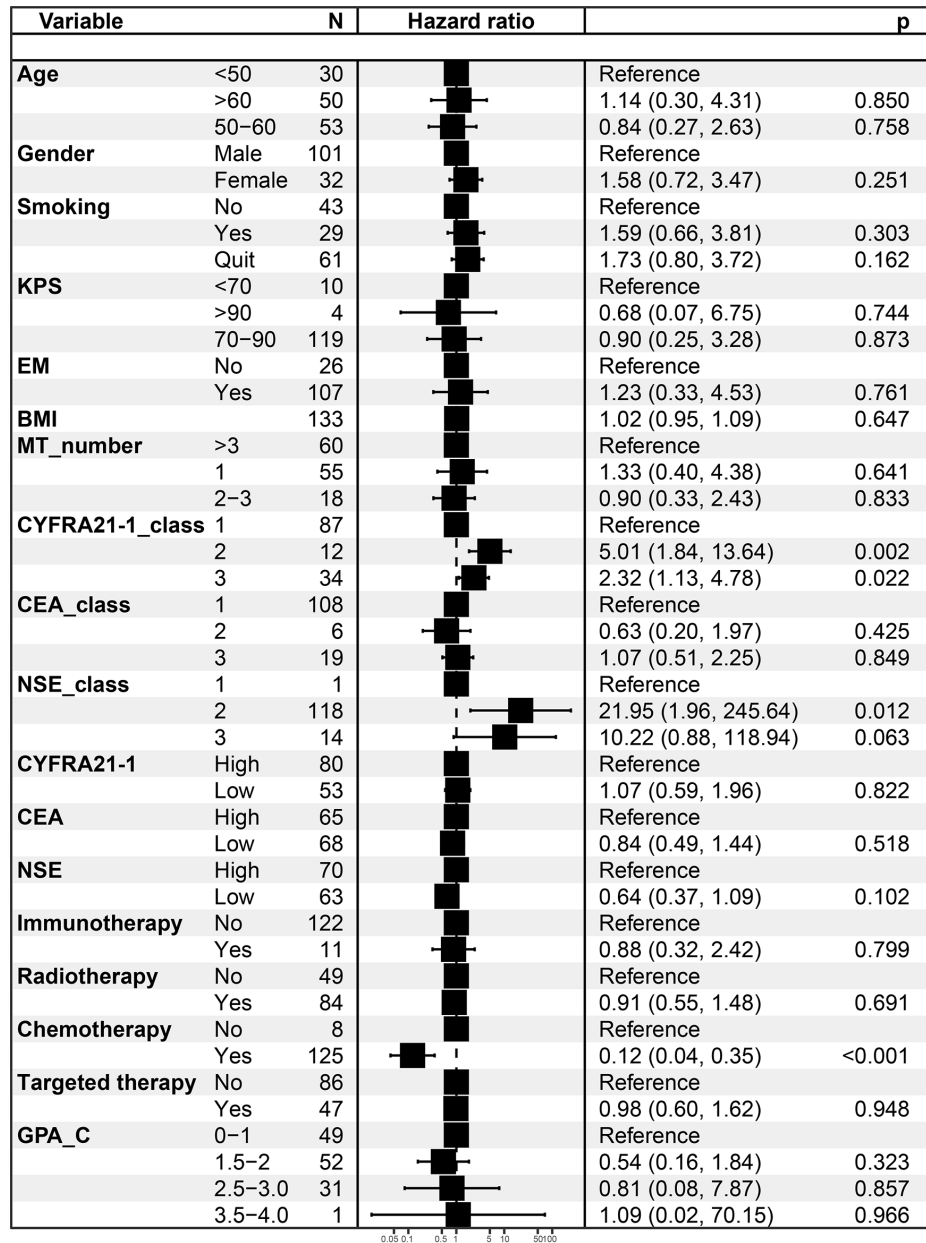


Figure S5 Multivariate Cox's forest plots of overall survival in lung cancer patients with brain metastases lacking key driver genes based on dynamic changes of different serum tumor markers.