

Figure S1 Cumulative incidence of recurrence in the overall study population (n=515). Curves represent the cumulative incidence (solid line) and 95% confidence bands (dashed lines) of recurrence obtained with competing risk cumulative incidence estimators treating death-from-other-or-unknown-causes as the competing event of interest.

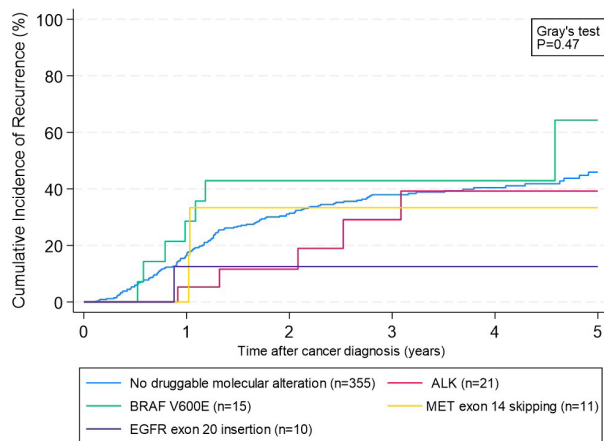


Figure S2 Cumulative incidence of recurrence according to the four most common molecular alterations compared to patients with no molecular alterations (n=412). Curves were obtained with competing risk cumulative incidence estimators treating death-from-other-or-unknown-causes as the competing event of interest. *ALK*, anaplastic lymphoma kinase fusions; *BRAF*, v-Raf murine sarcoma viral oncogene homolog B; *EGFR*, epidermal growth factor receptor; *MET*, hepatocyte growth factor receptor gene.

Table S1 Type of treatment regimens used in the perioperative setting

Type of treatment regimens	No mutation (n=355)	ALK (n=21)	RET (n=5)	BRAF ^{V600E} (n=15)	EGFR Ex20ins (n=10)	KRAS ^{G12C} (n=92)	METex14skipping (n=11)	HER2 (n=4)	NRG1 fusion (n=2)
Neoadjuvant treatment									
No neoadjuvant therapy	317 (89%)	17 (81%)	5 (100%)	11 (73%)	10 (100%)	83 (90%)	9 (82%)	2 (50%)	2 (100%)
Platinum/vinorelbine	12 (3%)	1 (5%)	0	0	0	0	0	0	0
Platinum/pemetrexed	5 (1%)	1 (5%)	0	1 (7%)	0	4 (4%)	1 (9%)	2 (50%)	0
Platinum/docetaxel	11 (3%)	0	0	1 (7%)	0	1 (1%)	0	0	0
Platinum/paclitaxel	0	0	0	1 (7%)	0	0	0	0	0
Platinum/etoposide	5 (1%)	0	0	0	0	0	0	0	0
Platinum/gemcitabine/durvalumab	1 (0.3%)	0	0	0	0	1 (1%)	0	0	0
Platinum/gemcitabine	4 (1%)	0	0	0	0	0	0	0	0
Alectinib	0	2 (10%)	0	0	0	0	0	0	0
Afatinib	0	0	0	0	0	0	1 (9%)	0	0
Platinum/pemetrexed/pembrolizumab	0	0	0	1 (7%)	0	2 (2%)	0	0	0
Platinum/pemetrexed/atezolizumab	0	0	0	0	0	1 (1%)	0	0	0
Adjuvant treatment									
No adjuvant therapy	286 (81%)	16 (76%)	4 (80%)	12 (80%)	7 (70%)	74 (80%)	9 (82%)	4 (100%)	2 (100%)
Platinum/vinorelbine	52 (15%)	0	0	1 (7%)	2 (20%)	11 (12%)	0	0	0
Platinum/pemetrexed	7 (2%)	2 (10%)	1 (20%)	2 (13%)	1 (10%)	5 (5%)	1 (9%)	0	0
Platinum/docetaxel	1 (0.3%)	0	0	0	0	0	0	0	0
Platinum/paclitaxel	0	0	0	0	0	1 (1%)	0	0	0
Platinum/etoposide	2 (0.6%)	0	0	0	0	0	0	0	0
Platinum/gemcitabine/durvalumab	0	0	0	0	0	0	0	0	0
Platinum/gemcitabine	6 (2%)	0	0	0	0	0	0	0	0
Alectinib	0	3 (14%)	0	0	0	0	0	0	0
Afatinib	0	0	0	0	0	0	1 (9%)	0	0
Platinum/pemetrexed/pembrolizumab	0	0	0	0	0	0	0	0	0
Platinum/pemetrexed/atezolizumab	0	0	0	0	0	0	0	0	0
Durvalumab	1 (0.3%)	0	0	0	0	0	0	0	0
Pembrolizumab	0	0	0	0	0	1 (1%)	0	0	0

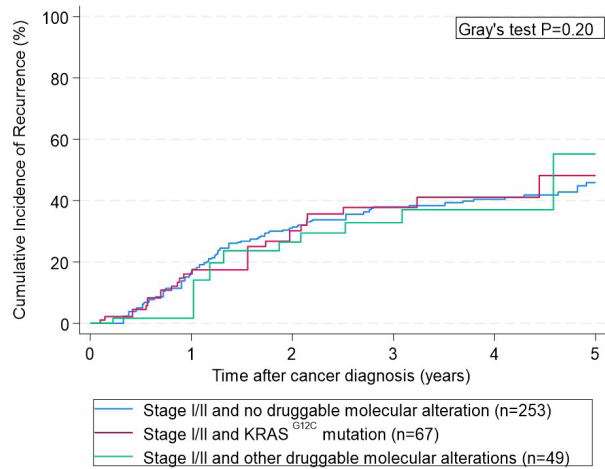


Figure S3 Cumulative incidence of recurrence according to molecular alteration status in the subgroup of patients with postoperative stage I/II disease (n=369). Curves were obtained with competing risk cumulative incidence estimators treating death-from-other-or-unknown-causes as the competing event of interest.

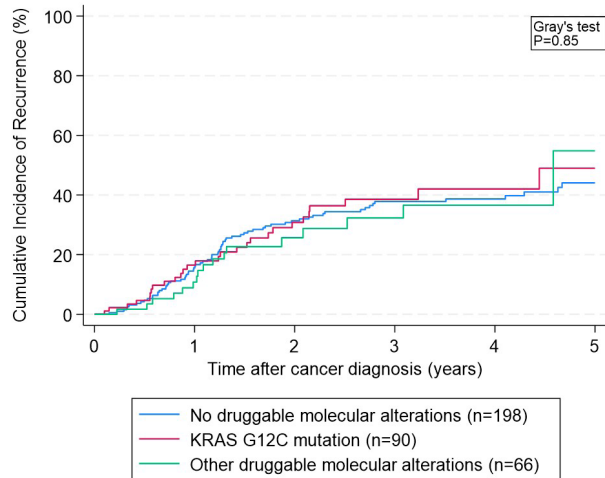


Figure S4 Cumulative incidence of recurrence according to molecular alteration status in the subgroup of patients with adenocarcinomas (n=354). Curves were obtained with competing risk cumulative incidence estimators treating death-from-other-or-unknown-causes as the competing event of interest.