

Figure S1 Waterfall plot of tumor regression according to radiology. The dashed line indicates the threshold for achieving a partial response. Radiological tumor regression was determined as the negative of 100 minus the residual tumor percentage. MIS, minimally invasive surgery.

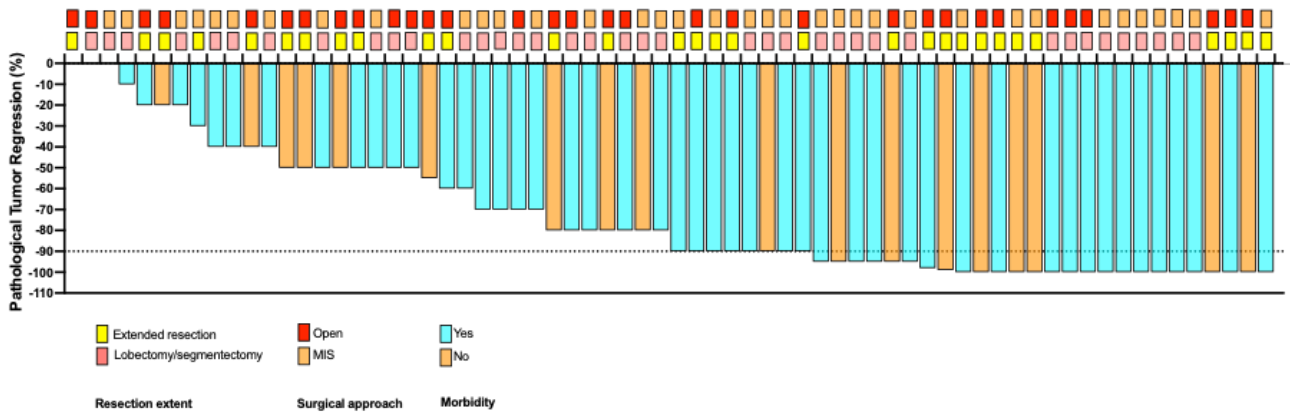


Figure S2 Waterfall plot of tumor regression according to pathology. The dashed line indicates the threshold for achieving a major pathological response. Pathological tumor regression was determined as the negative of 100 minus the residual tumor percentage. MIS, minimally invasive surgery.

Table S1 Published articles reporting surgical outcomes of patients after neoadjuvant immunotherapy with or without chemotherapy

Trial name or author	Trial ID	N	SCC	Stage III	N2	T3&T4	ORR	Extended	MIS	R0	MPR	Ref
NADIM	NCT03081689	41	35	100	74	52	76	22	51	100	83	(2)
CheckMate 816	NCT02998528	149	49	63	NA	NA	54	36	30	83	37	(3)
KEYNOTE-671	NCT03425643	397	43	70	42	59	NA	21	NA	92	30	(4)
CheckMate159	NCT02259621	20	24	33	19	28	10	20	30	95	45	(6)
Shu <i>et al.</i>	NCT02716038	29	40	77	63	NA	63	27	46	87	57	(7)
NEOSTAR	NCT03158129	39	39	20	16	16	22	NA	NA	100	28	(8)
SAKK 16/14	NCT02572843	55	33	100	100	28	58	22	NA	93	62	(9)
LCMC3	NCT02927301	159	37	46	46	NA	NA	18	54	91	19	(10)
Gao <i>et al.</i>	ChiCTR17013726	37	82	45	NA	NA	20	33	NA	97	40	(11)
IFCTNA1601 IONESCO	NCT03030131	46	41	61	0	NA	9	30	21	89	19	(12)
NADIM II	NCT03838159	87	37	100	NA	NA	74	NA	NA	93	52	(13)
Zhang <i>et al.</i>	ChiCTR1900023758	50	56	100	82	18	47	20	3	100	43	(14)
Our research	/	68	62	79	71	40	54	46	53	88	50	/

Data are presented as a percentage unless indicated otherwise. N, Number of patients receiving neoadjuvant immunotherapy in the study; SCC, squamous cell carcinoma; ORR, objective response rate; Extended, extended resections; MIS, minimally invasive surgery; MPR, major pathological response; Ref, references in the manuscript; NA, not available.

Table S2 Postoperative complications of 68 patients with clinical stage IB–IIIB non-small cell lung cancer

Event	Total (N=20)	Standard (N=5)	Bilobectomy (N=3)	Sleeve (N=11)	Pneumonectomy (N=1)	Lobectomy + SVC replacement (N=1)
Air leak	10	1	1	7		1
Atrial fibrillation	5	2		2	1	
Gastroparesis	2	1		1		
Chyle leak	1	1				
BPF	1		1			
Empyema	1			1		
Death	1		1			

BPF, bronchopleural fistula; SVC, super vena cava.