

Table S1 Compliance rates with EORTC QLQ-C30 questionnaires

Visit time	Compliance rates, n (%)	
	WBRT (n=114)	WBRT + erlotinib (n=105)
Baseline	114 (100.0)	105 (100.0)
Month 1	99/114 (86.8)	90/105 (85.7)
Month 3	69/100 (69.0)	64/93 (68.8)
Month 5	53/80 (66.3)	48/78 (61.5)
Month 7	41/69 (59.4)	44/69 (63.8)
Month 9	26/63 (41.3)	34/61 (55.7)

EORTC QLQ-C30, European Organization for Research and Treatment of Cancer 30-item Core Quality of Life Questionnaire; WBRT, whole-brain radiotherapy.

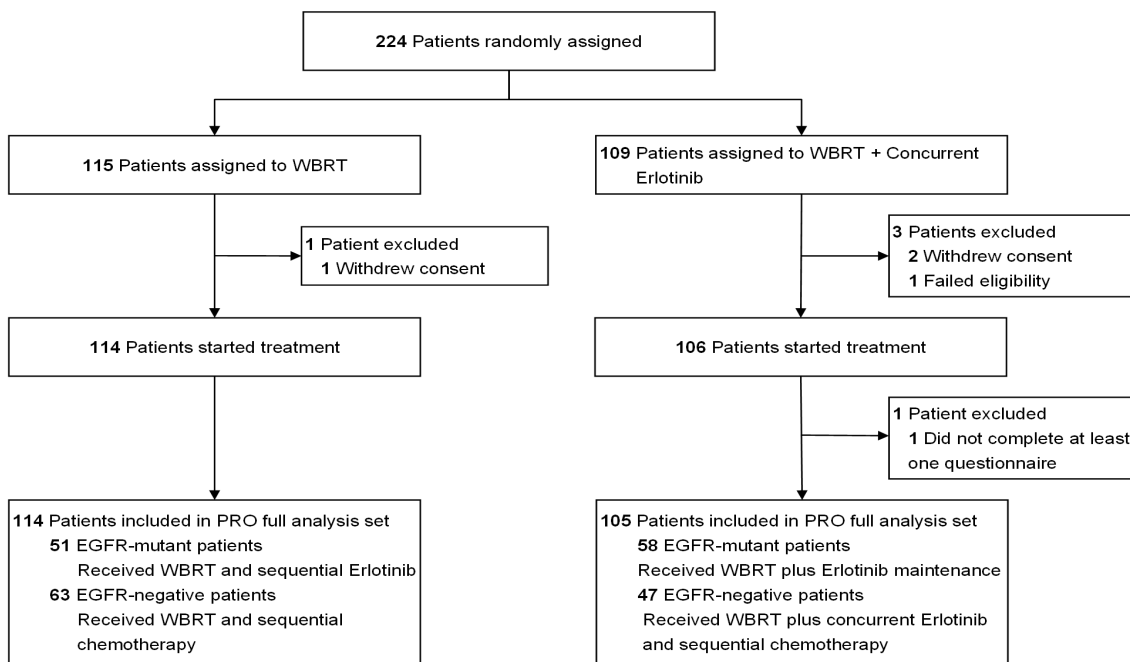


Figure S1 CONSORT diagram. Inclusion in the study patient profile. WBRT, whole-brain radiotherapy; EGFR, epidermal growth factor receptor; PRO, patient-reported outcome.

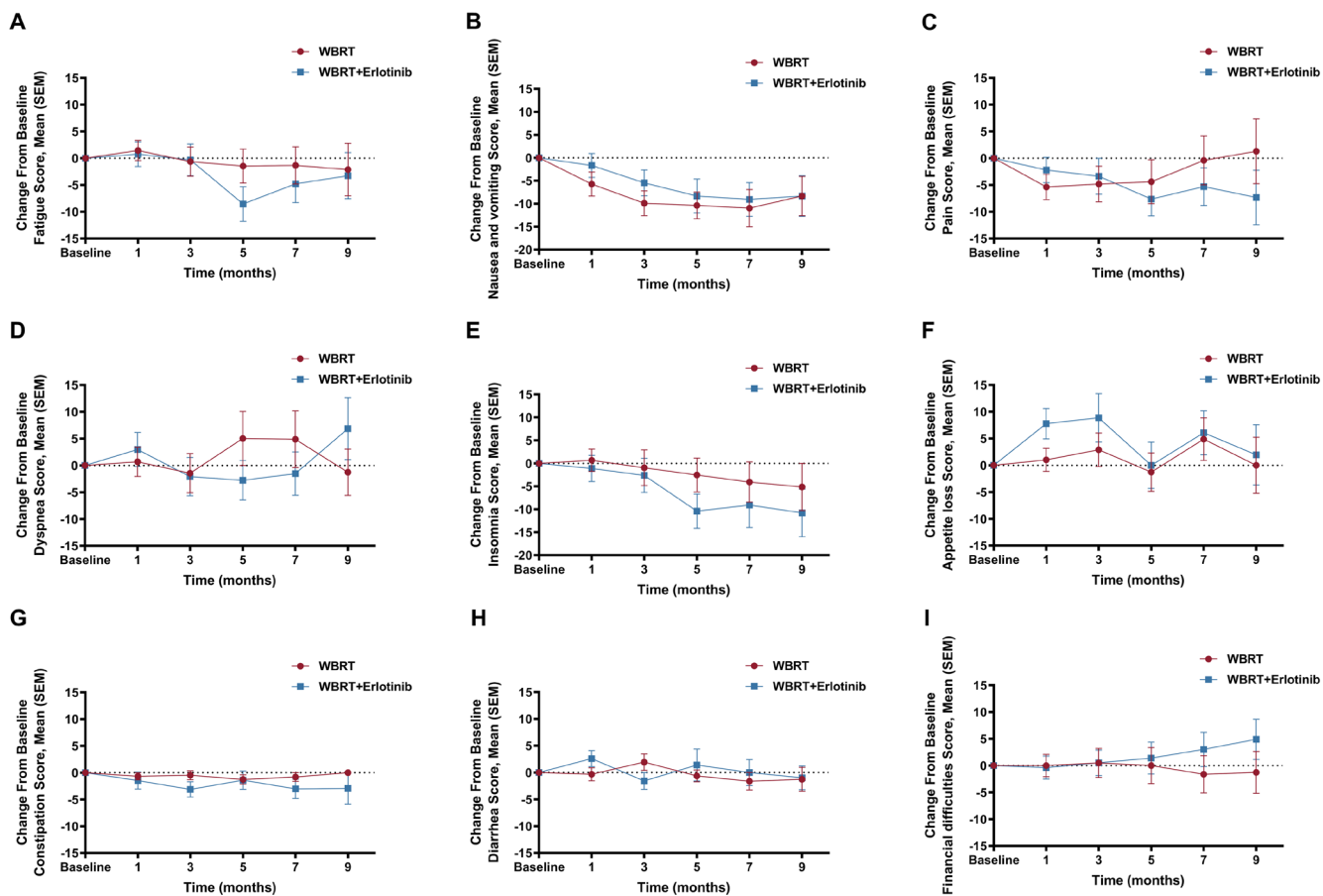


Figure S2 Mean change from baseline in symptom scales scores by visit. (A) Fatigue; (B) nausea and vomiting; (C) pain; (D) dyspnea; (E) insomnia; (F) appetite loss; (G) constipation; (H) diarrhea; (I) financial difficulties. Data points represent means, and error bars denote SEM. WBRT, whole-brain radiotherapy; SEM, standard error of the mean.

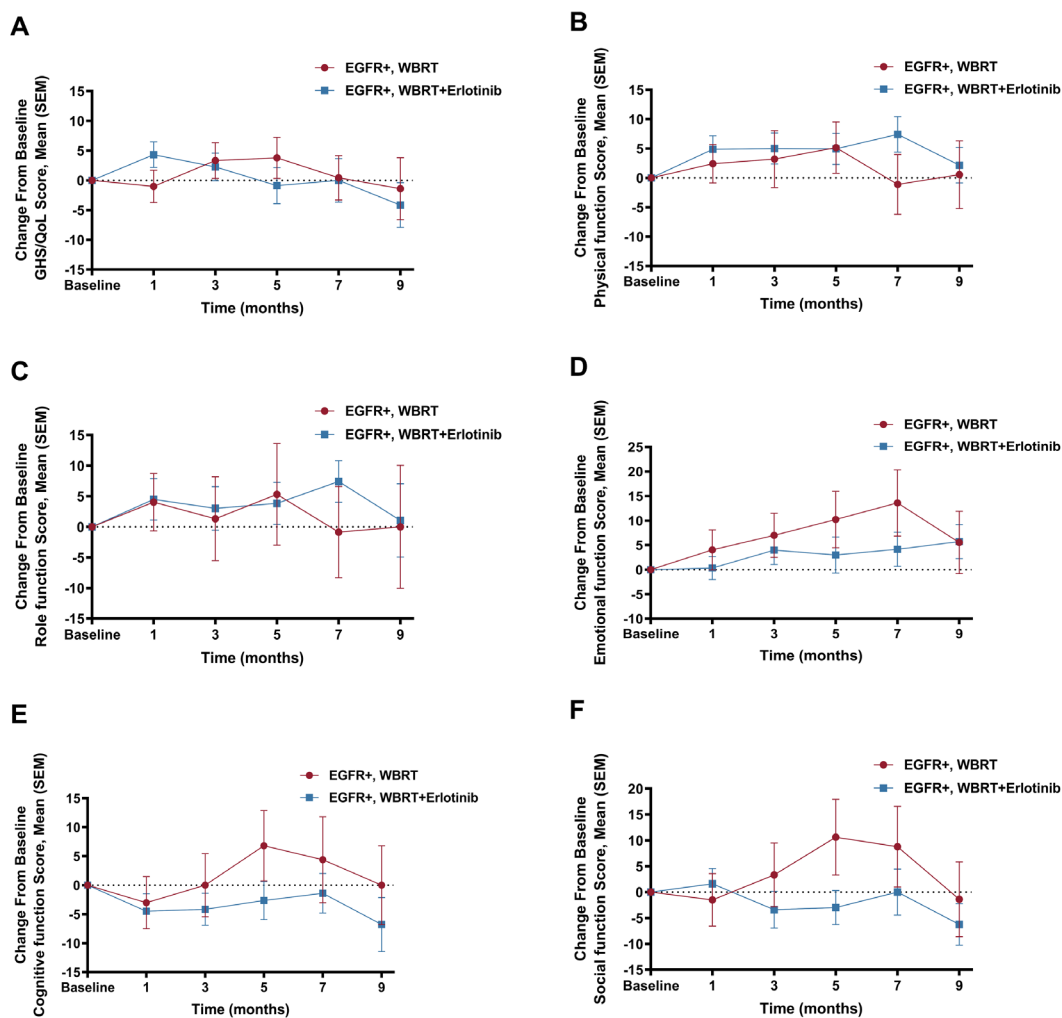


Figure S3 Mean change from baseline in GHS/QoL and functioning scales scores in the EGFR-mutated subgroup by visit. (A) GHS/QoL scores; (B) physical function scores; (C) role function scores; (D) emotional function scores; (E) cognitive function scores; (F) social function scores. Data points represent means, and error bars denote SEM. WBRT, whole-brain radiotherapy; EGFR, epidermal growth factor receptor; SEM, standard error of the mean; GHS, global health status; QoL, quality-of-life.

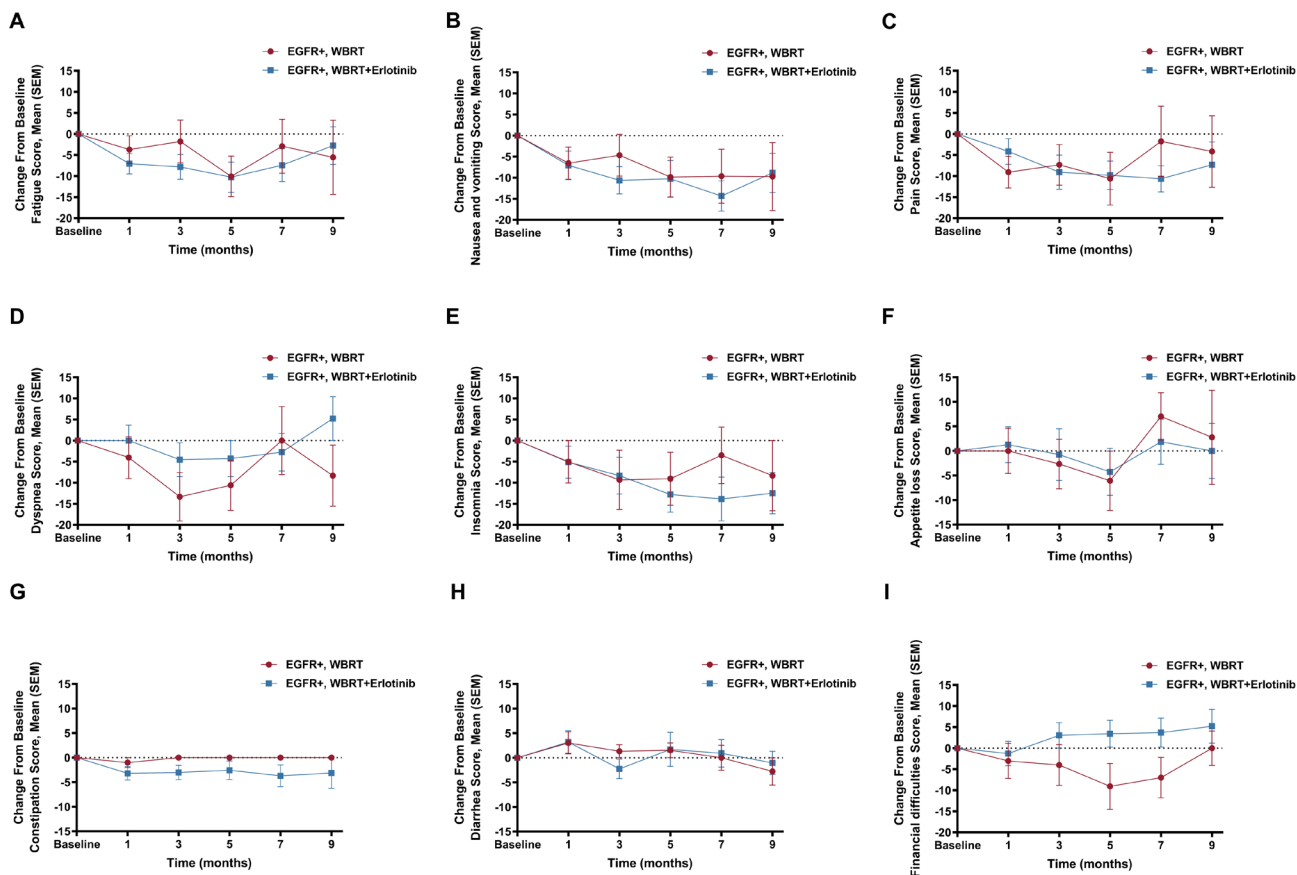


Figure S4 Mean change from baseline in symptom scales scores in the EGFR-mutated subgroup by visit. (A) Fatigue; (B) nausea and vomiting; (C) pain; (D) dyspnea; (E) insomnia; (F) appetite loss; (G) constipation; (H) diarrhea; (I) financial difficulties. Data points represent means, and error bars denote SEM. WBRT, whole-brain radiotherapy; EGFR, epidermal growth factor receptor; SEM, standard error of the mean.