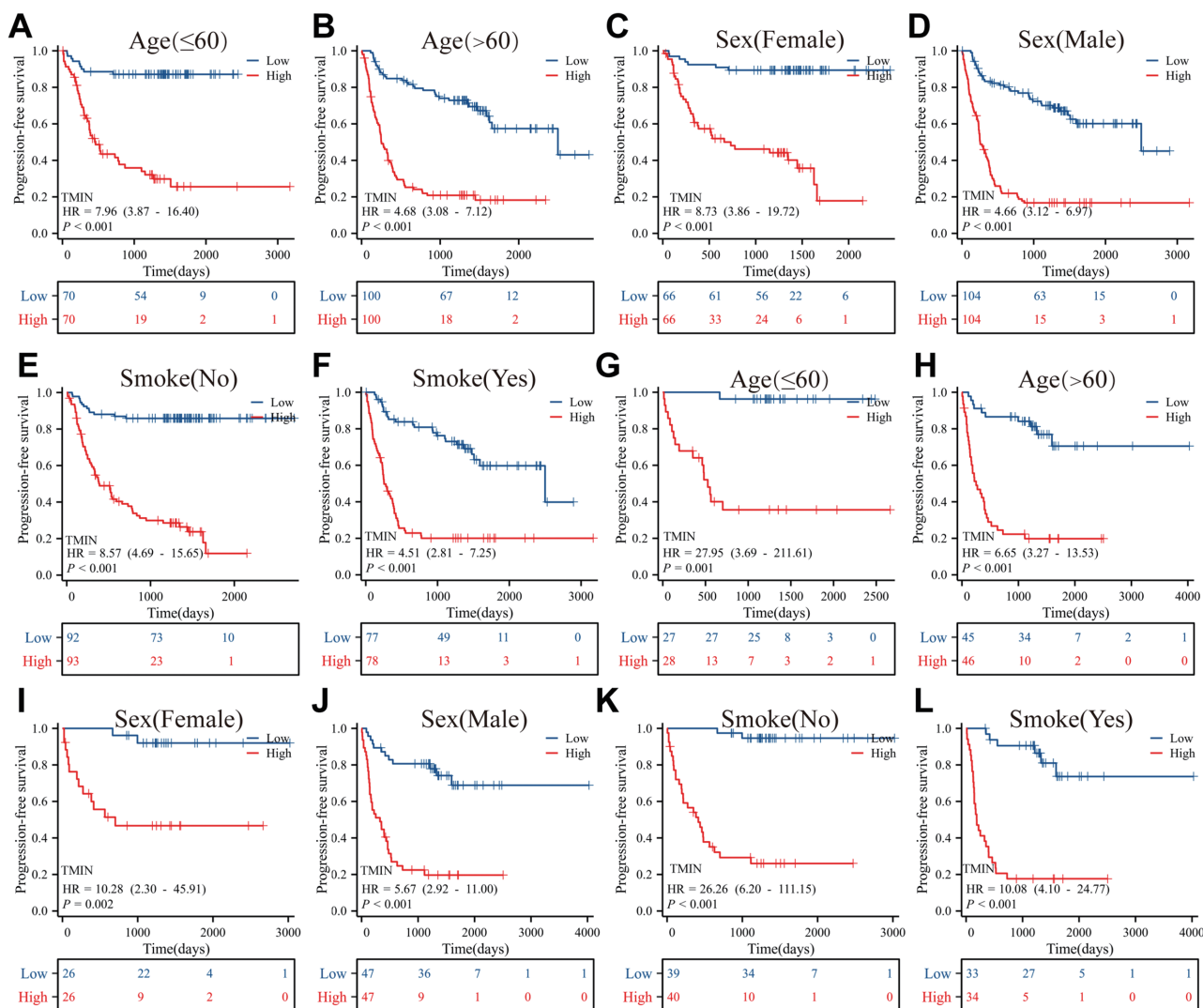


**Figure S1** Kaplan-Meier survival curves for predicting PFS of NSCLC patients using blood-related indicators. (A) WBC, (B) N, (C) LYM, (D) M, (E) PLT, (F) Hb, (G) ALB, (H) GLB, (I) PAB, (J) CEA, (K) CYFRA21-1, (L) FIB, (M) NLR, (N) PLR, (O) HALP and (P) LMR. HR, hazard ratio; WBC, white blood cell; N, neutrophils; LYM, lymphocyte; M, monocyte; PLT, platelet; Hb, hemoglobin; ALB, albumin; GLB, globulin; PAB, prealbumin; CEA, carcinoembryonic antigen; CYFRA21-1, cytokeratins21-1; FIB, fibrinogen; NLR, neutrophil to lymphocyte ratio; PLR, platelet to lymphocyte ratio; HALP, hemoglobin-albumin-lymphocytes-platelets; LMR, lymphocyte-to-monocyte ratio; PFS, progression-free survival; NSCLC, non-small cell lung cancer.



**Figure S2** Kaplan-Meier survival for predicting PFS of the high and low TMIN groups in (A,B) age ( $\leq 60$ ,  $> 60$ ) subgroups, (C,D) sex (female, male) and (E,F) smoking (no, yes) in training and (G-L) validation subgroups. According to the optimal threshold, TMIN was divided into high and low groups: the low TMIN group was blue curve, and the high TMIN group was red curve. PFS, progression-free survival; TMIN, tumor marker inflammatory nutrition score; NSCLC, non-small cell lung cancer; HR, hazard ratio.

**Table S1** Univariate and multivariate analyses of the PFS in the training set

| Characteristics             | Total (N) | Univariate analysis  |         | Multivariate analysis |         |
|-----------------------------|-----------|----------------------|---------|-----------------------|---------|
|                             |           | HR (95% CI)          | P value | HR (95% CI)           | P value |
| Age (years)                 | 340       |                      |         |                       |         |
| ≤60                         | 140       | Reference            |         |                       |         |
| >60                         | 200       | 1.119 (0.819–1.530)  | 0.47    |                       |         |
| Sex                         | 340       |                      |         |                       |         |
| Female                      | 132       | Reference            |         | Reference             |         |
| Male                        | 208       | 2.001 (1.419–2.822)  | <0.001* | 1.890 (1.194–2.992)   | 0.007*  |
| Smoke                       | 340       |                      |         |                       |         |
| No                          | 185       | Reference            |         | Reference             |         |
| Yes                         | 155       | 1.429 (1.052–1.941)  | 0.02*   | 0.823 (0.540–1.255)   | 0.36    |
| Pathological classification | 340       |                      |         |                       |         |
| Adenocarcinoma              | 260       | Reference            |         | Reference             |         |
| Non-adenocarcinoma          | 80        | 1.953 (1.410–2.705)  | <0.001* | 0.998 (0.678–1.470)   | >0.99   |
| Tumor location              | 340       |                      |         |                       |         |
| M/L                         | 147       | Reference            |         |                       |         |
| U                           | 193       | 1.058 (0.777–1.441)  | 0.72    |                       |         |
| Tumor diameter (cm)         | 340       |                      |         |                       |         |
| <3.0                        | 165       | Reference            |         | Reference             |         |
| ≥3.0                        | 175       | 4.673 (3.261–6.698)  | <0.001* | 1.526 (1.017–2.290)   | 0.04*   |
| AJCC stage                  | 340       |                      |         |                       |         |
| I/II                        | 160       | Reference            |         | Reference             |         |
| III/IV                      | 180       | 8.074 (5.351–12.182) | <0.001* | 3.458 (2.087–5.73)    | <0.001* |
| Metastasis                  | 340       |                      |         |                       |         |
| No                          | 232       | Reference            |         | Reference             |         |
| Yes                         | 108       | 5.52 (4.011–7.596)   | <0.001* | 1.754 (1.192–2.580)   | 0.004*  |
| ECOG-PS                     | 340       |                      |         |                       |         |
| <2                          | 231       | Reference            |         | Reference             |         |
| ≥2                          | 109       | 2.122 (1.159–2.889)  | <0.001* | 1.358 (0.981–1.880)   | 0.06    |
| TMIN score                  | 340       |                      |         |                       |         |
| ≤−0.35                      | 140       | Reference            |         | Reference             |         |
| >−0.35                      | 200       | 6.727 (4.350–10.404) | <0.001* | 2.782 (1.505–4.094)   | <0.001* |

\*, P<0.05. PFS, progression-free survival; M/L, middle/lower; U, upper; AJCC, American Joint Committee on Cancer; ECOG-PS, Eastern Cooperative Oncology Group performance status; TMIN, tumor marker inflammatory nutrition; HR, hazard ratio; CI, confidence interval.