

Figure S1 Molecular structure of AKF-PD. AKF-PD, fluorofenidone.

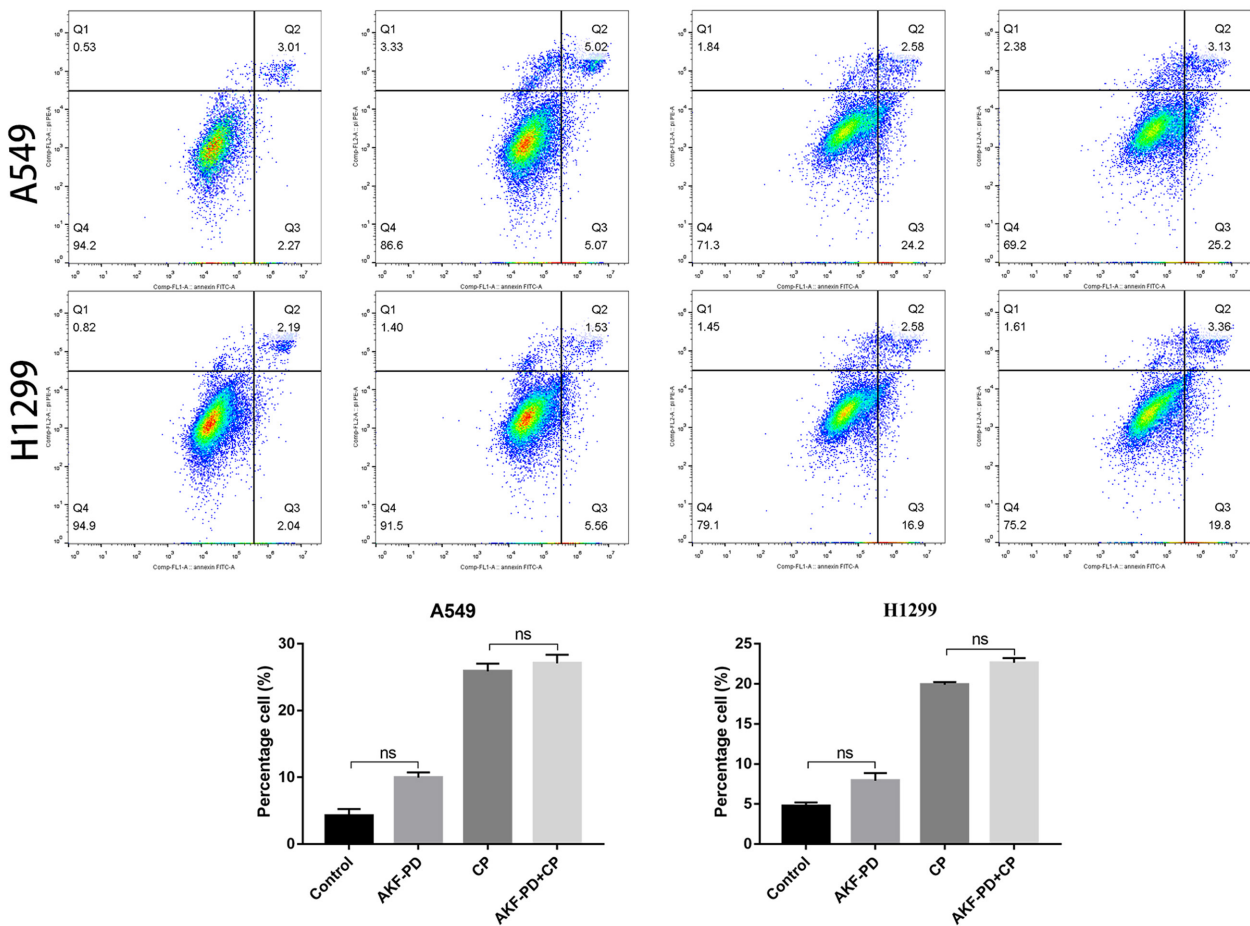


Figure S2 Flow cytometry of annexin V-FITC/PI staining in A549 and H1299. ns, $P > 0.05$. AKF-PD, fluorofenidone; CP, cisplatin; FITC, fluorescein isothiocyanate; PI, propidium iodide.

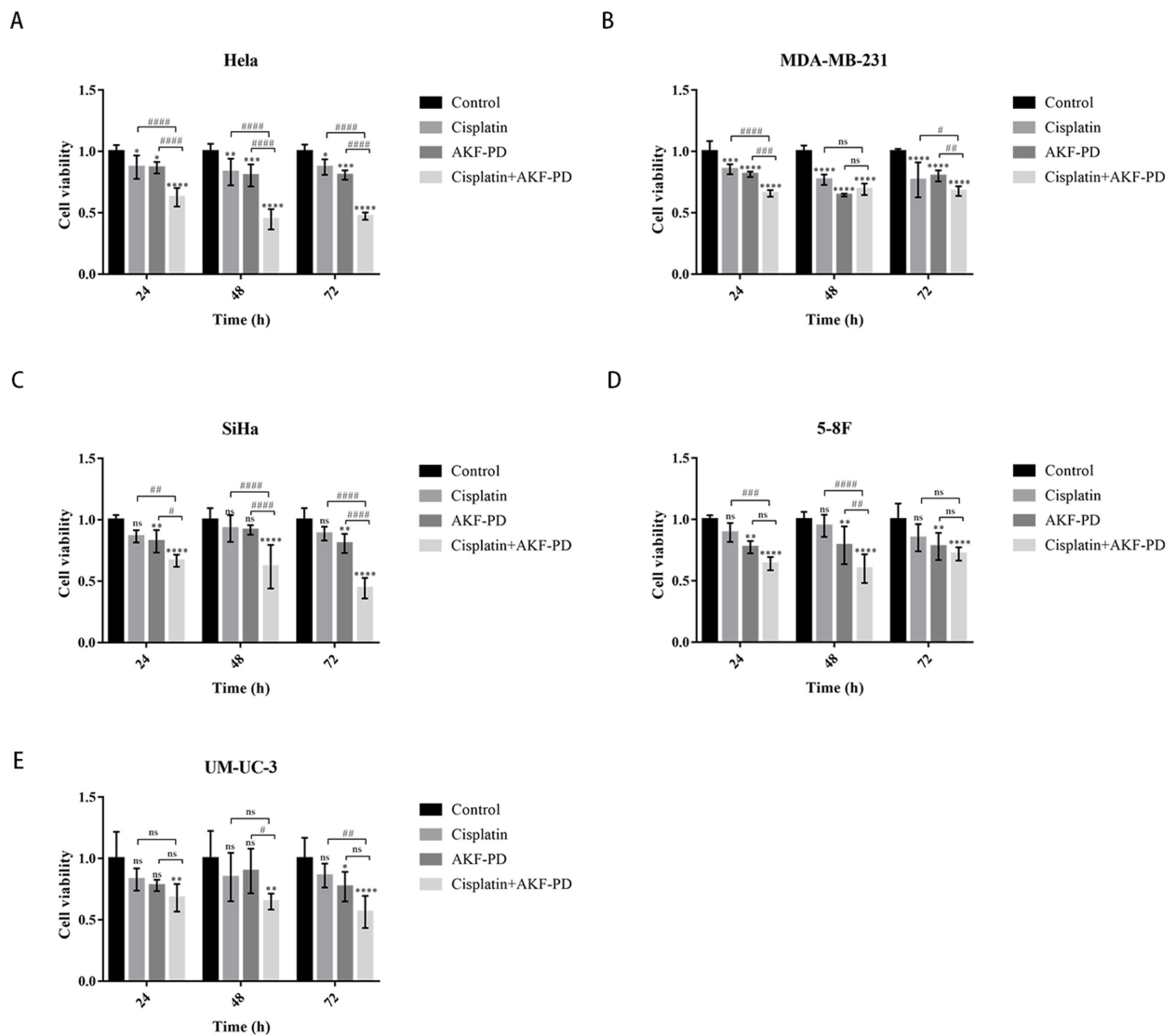


Figure S3 AKF-PD combined with CP inhibits the proliferation of a variety of cancer cell lines. The doses used in this study were AKF-PD (400 $\mu\text{g}/\text{mL}$) and/or CP (10 μM). (A) Hela cells. (B) MDA-MB-231 cells. (C) SiHa cells. (D) 5-8F cells. (E) UM-UC-3 cells. *, $P < 0.05$; **, $P < 0.01$; ***, $P < 0.001$; ****, $P < 0.0001$; #, $P < 0.05$; ##, $P < 0.01$; ###, $P < 0.001$; ####, $P < 0.0001$; and ns, $P > 0.05$. AKF-PD, fluorofenidone; CP, cisplatin.