

mOS (months) (95% CI) 33.0 (24.5- 44.1)
 1-year survival (%) 79
 2-years survival (%) 58
 5-year survival (%) 34

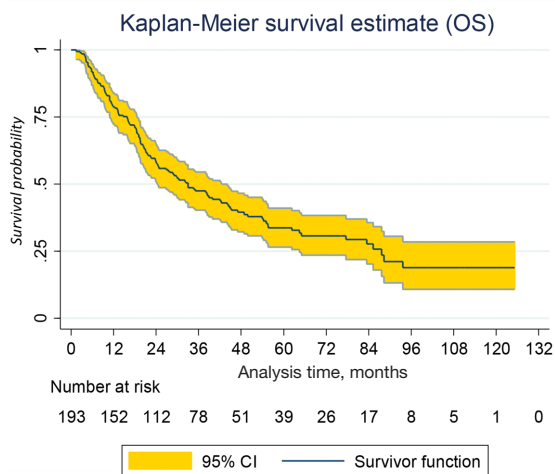


Figure S1 Kaplan-Meier distribution for OS. OS is defined as time from diagnosis to death from any cause. CI, confidence interval; OS, overall survival.

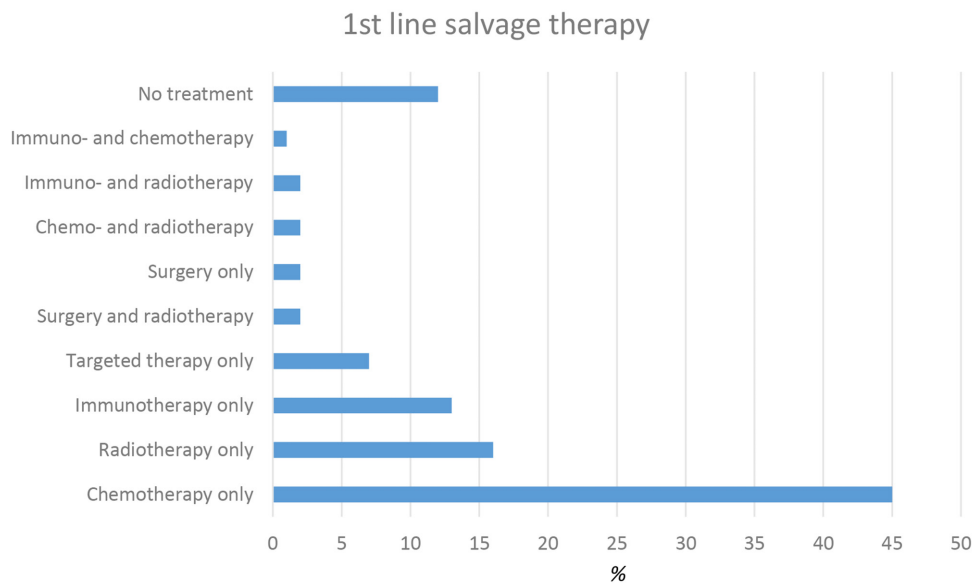


Figure S2 Salvage treatment after chemoradiotherapy (%).