

Figure S1 The relationship between risk groups and clinical characteristics. (A) A violin plot depicting the relationship between risk stratification and the SUVmax. (B) A box plot depicting the relationship between risk stratification and the TMB. SUVmax, maximum standardized uptake value; TMB, tumor mutational burden.

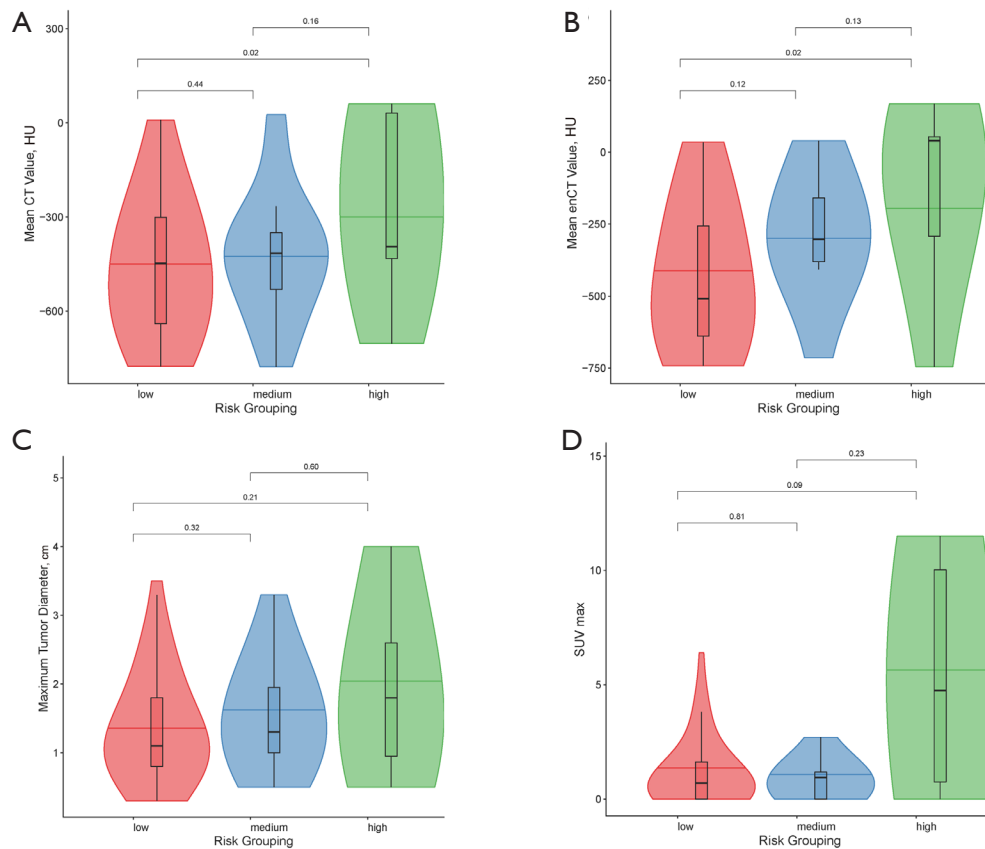


Figure S2 The relationship between risk groups of the clinically low-risk patients and clinical characteristics. (A) A violin plot depicting the association between risk stratification and the average CT value. (B) A violin plot depicting the relationship between risk stratification and the average enhanced CT value. (C) A violin plot depicting the relationship between risk stratification and the MTD. (D) A violin plot depicting the relationship between risk stratification and the SUVmax. CT, computed tomography; HU, Hounsfield unit; enCT, enhanced CT; MTD, maximum tumor diameter; SUVmax, maximum standardized uptake value.