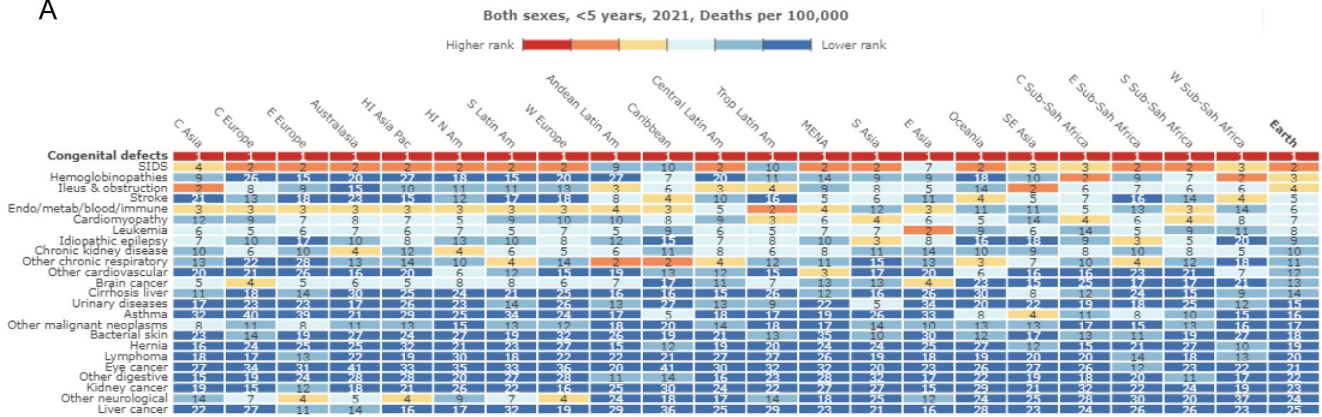


A



B

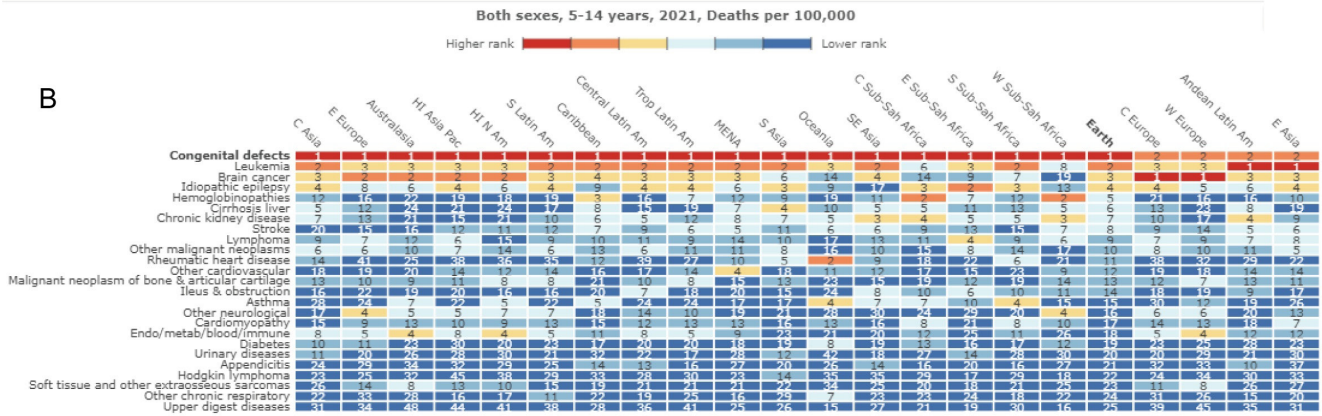


Figure S1 Ranking of birth defect mortality burden within all-cause mortality across different age groups. A. ASDR ranking for birth defects among children under 5 years. B. ASDR ranking for birth defects among children aged 5-14 years. ASDR, age-standardized death rate.

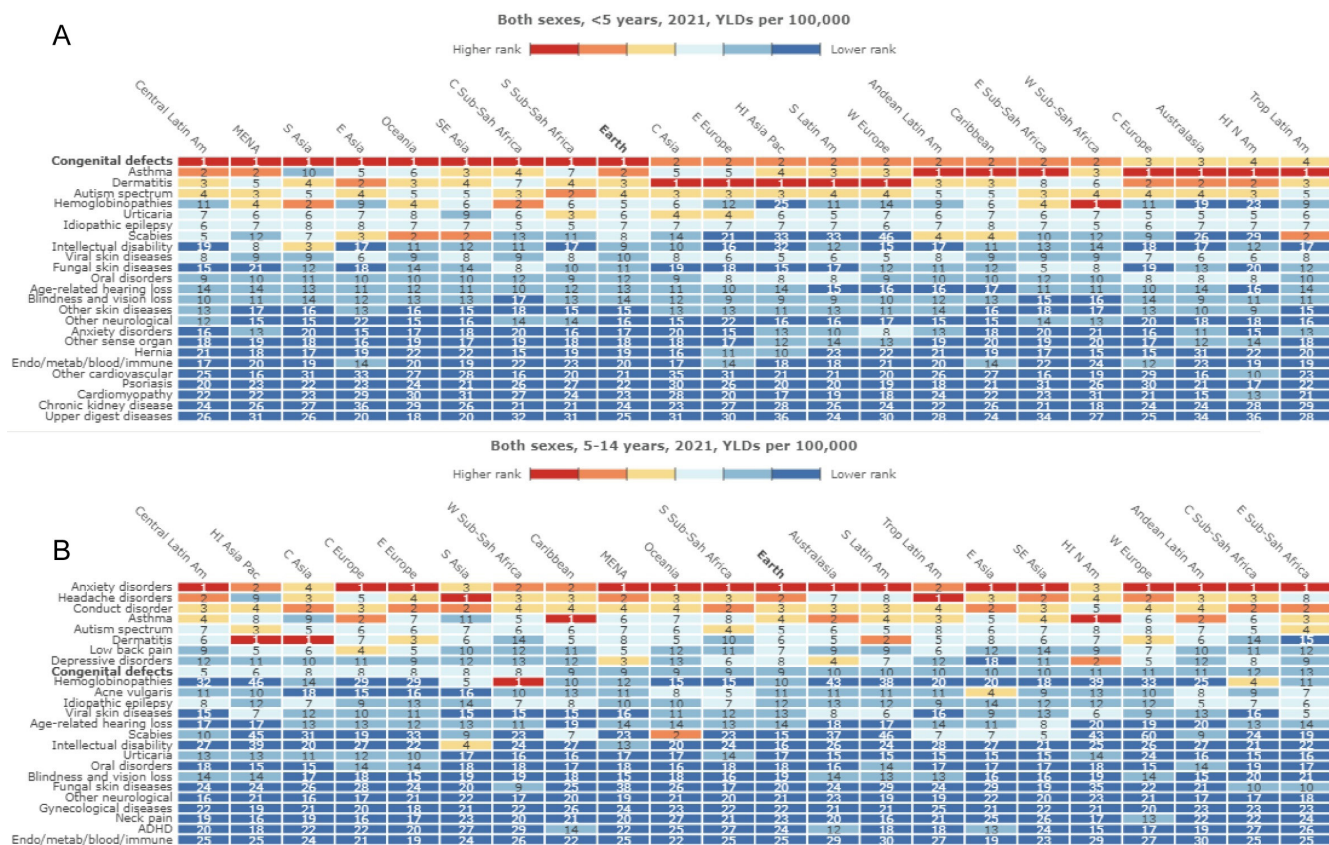


Figure S2 Birth defect mortality rankings within all-cause mortality by age group. A. Ranking of ASDR for birth defects among children under 5 years. B. Ranking of YLD for birth defects among children aged 5-14 years. YLD, years lived with disability.

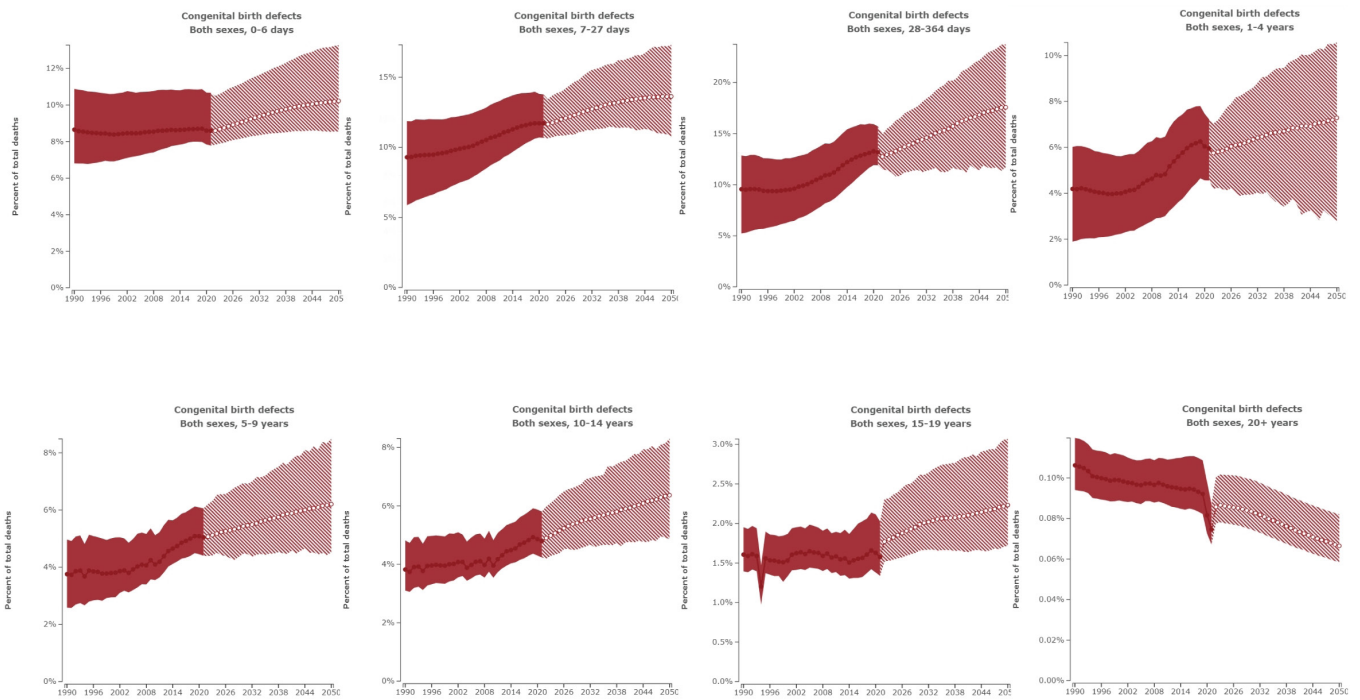


Figure S3 Age-specific distribution of the proportion of ASDR attributable to birth defects among all-cause mortality from 1990 to 2021, along with projections for 2021 to 2050. ASDR, age-standardized death rate.

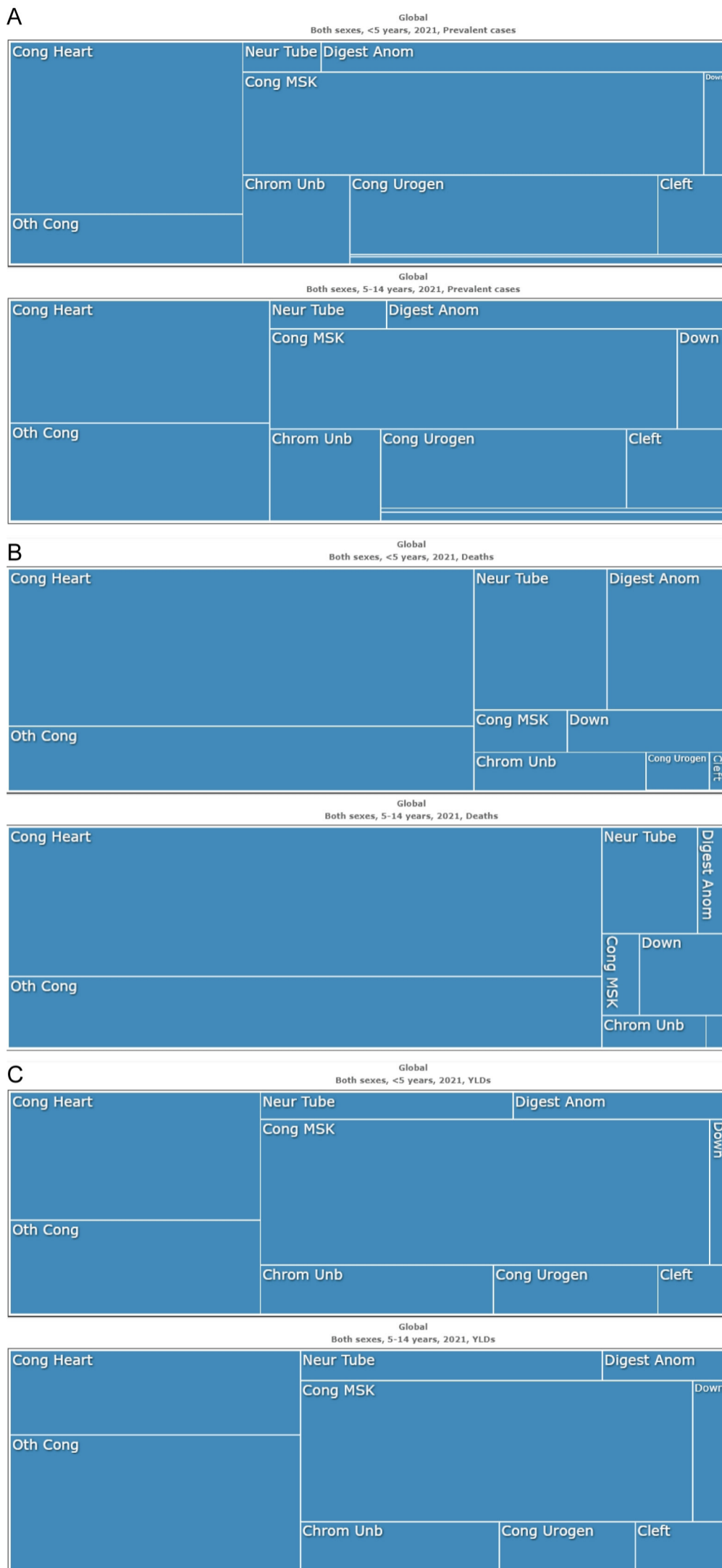


Figure S4 Ranking of disease burden for ten subtypes of birth defects in children aged <5 years and 5-14 years based on A. prevalence, B. mortality, and C. years lived with disability (YLD). YLD, years lived with disability.

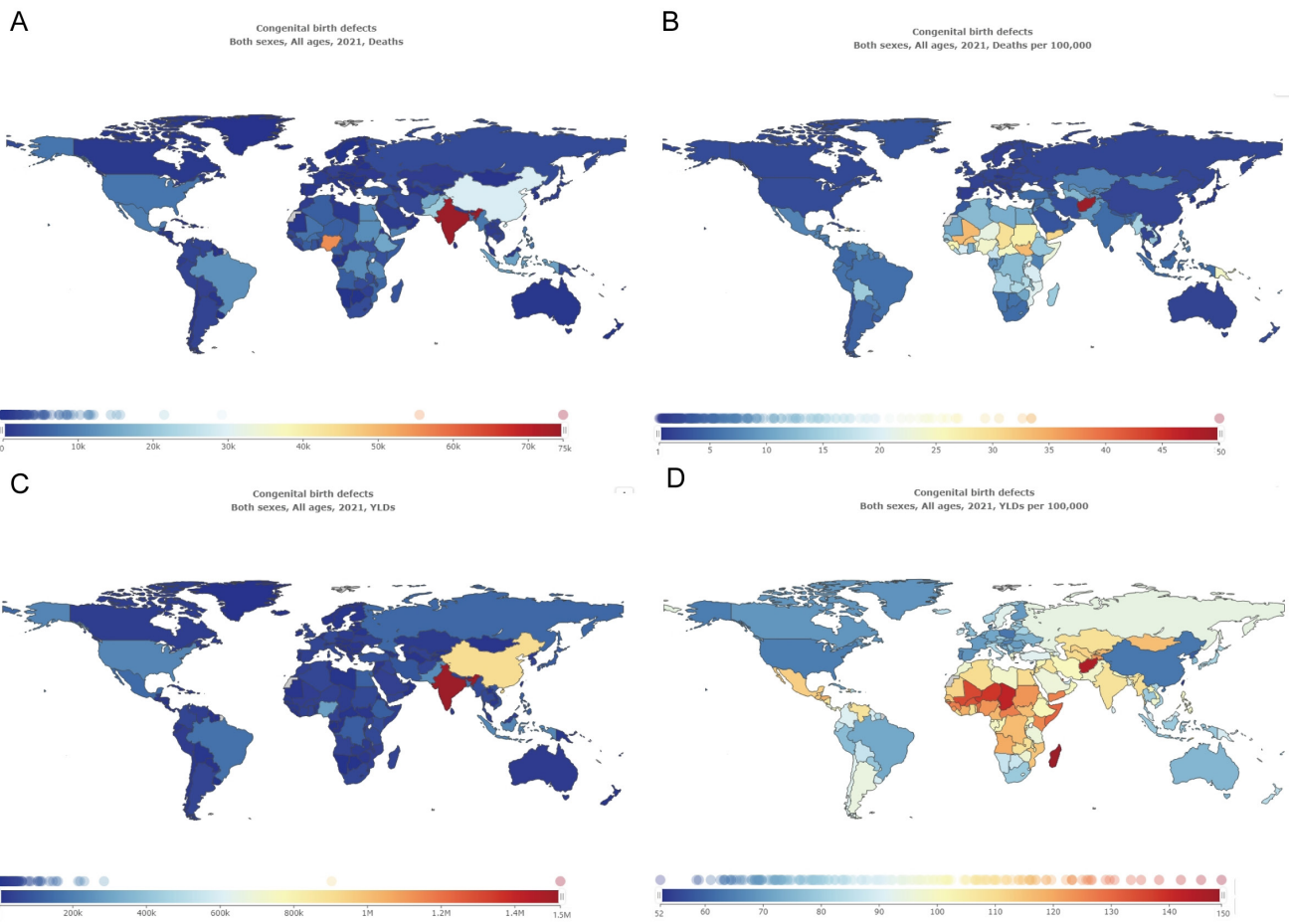


Figure S5 Global disease burden of birth defects across 204 countries and territories. A. Mortality, B. ASDR, C. YLD, and D. ASYR for birth defects. ASDR, age-standardized death rate; YLD, years lived with disability; ASYR, age-standardized YLD rate.

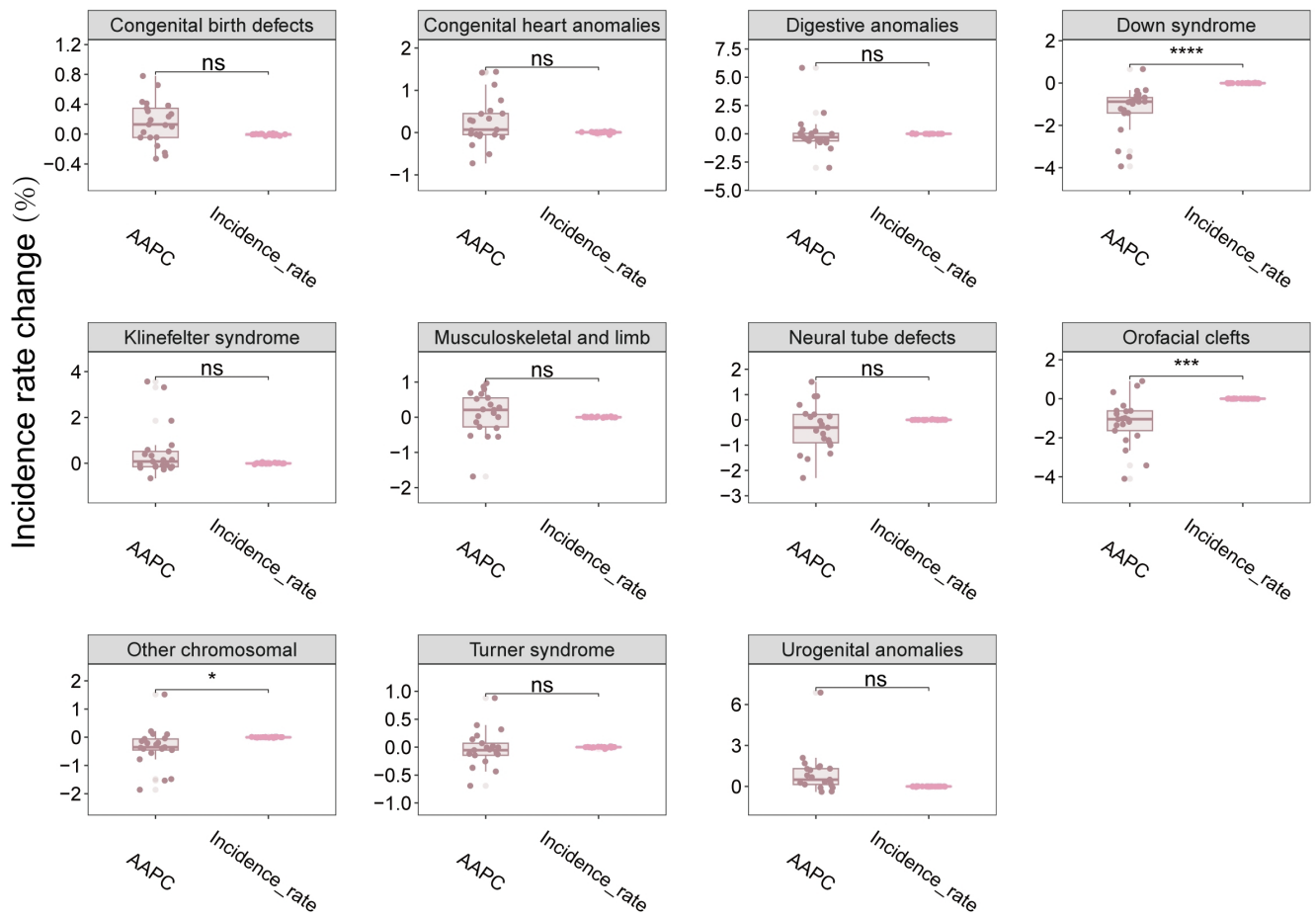


Figure S6 Comparison of the AAPC in ASIR for birth defects and their ten subtypes from 2016 to 2020 with the change in ASIR for the year 2021. AAPC, average annual percentage change.

Table S1 Global and SDI region-specific disease burden of congenital birth defects

Items	Prevalence						Death						YLD					
	1990		2021		Change		1990		2021		Change		1990		2021		Change	
	Number (person)	ASPR (/10 ⁵)	Number (person)	ASPR (/10 ⁵)	Number (%)	Rate (%)	Number (person)	ASDR (/10 ⁵)	Number (person)	ASDR (/10 ⁵)	Number (%)	Rate (%)	Number (person)	ASYP (/10 ⁵)	Number (person)	ASYP (/10 ⁵)	Number (%)	Rate (%)
Global	53,228,605.40 (59,376,385.81–47,858,994.11)	997.98 (1,113.25–897.31)	68,319,601.26 (77,054,421.86–60,983,864.06)	865.75 (976.44–772.79)	28.35	–13.25	948,985.16 (1,229,642.37–591,228.61)	17.79 (23.05–11.08)	530,946.58 (642,418.94–454,278.97)	6.73 (8.14–5.76)	–44.05	–62.17	88,529,007.36 (113,394,608.92–56,817,570.65)	1,659.83 (2,126.03–1,065.27)	52,325,332.69 (62,682,127.14–45,186,944.83)	663.07 (794.31–572.61)	–40.89	–60.05
Male	27,403,317.57 (30,717,287.52–24,510,147.45)	1,020.33 (1,143.72–912.60)	35,245,220.69 (40,246,862.18–31,287,584.68)	890.17 (1,016.49–790.21)	28.62	–12.76	515,017.49 (687,040.50–323,992.78)	19.18 (25.58–12.06)	281,676.53 (353,397.23–232,476.77)	7.11 (8.93–5.87)	–45.31	–62.93	2,669,671.15 (3,603,560.19–1,923,012.28)	107.45 (147.06–75.94)	3,718,507.61 (5,145,083.92–2,624,399.91)	93.92 (129.95–66.28)	28.86	–12.59
Female	25,825,287.84 (28,723,049.28–23,336,281.84)	975.32 (1,084.76–881.32)	33,074,380.57 (37,237,097.32–29,733,464.14)	841.17 (947.04–756.20)	28.07	–13.75	433,967.68 (605,178.72–237,376.88)	16.39 (22.86–8.96)	249,270.06 (310,896.44–209,007.07)	6.34 (7.91–5.32)	–42.56	–61.32	2,885,737.47 (3,949,744.19–2,039,657.92)	100.82 (136.09–72.62)	3,444,333.52 (4,661,491.25–2,469,234.70)	87.60 (118.55–62.80)	29.02	–13.12
High SDI	7,326,607.33 (7,951,209.55–6,745,533.72)	833.01 (904.03–766.94)	7,706,703.99 (8,387,235.87–7,091,112.77)	704.42 (766.62–648.15)	5.19	–15.44	47,131.72 (49,482.03–44,303.66)	5.36 (5.63–5.04)	21,646.84 (22,885.82–20,322.54)	1.98 (2.09–1.86)	–54.07	–63.06	749,683.27 (1,000,819.34–541,450.66)	85.24 (113.79–61.56)	785,648.86 (1,039,904.67–568,507.58)	71.81 (95.05–51.96)	4.80	–15.75
High-middle SDI	9,710,802.08 (10,726,434.23–8,771,662.86)	913.07 (1,008.57–824.77)	9,512,198.58 (10,534,631.97–8,628,228.64)	729.45 (807.85–661.66)	–2.05	–20.11	138,203.83 (158,658.69–101,889.09)	12.99 (14.92–9.58)	31,096.01 (35,420.67–27,216.81)	2.38 (2.72–2.09)	–77.50	–81.68	1,039,364.44 (1,390,947.13–742,082.53)	97.73 (130.79–69.78)	1,026,319.31 (1,386,883.56–736,032.43)	78.70 (106.35–56.44)	–1.26	–19.47
Low SDI	6,208,341.89 (7,016,821.06–5,497,706.48)	1,238.45 (1,399.72–1,096.69)	12,384,753.24 (14,120,041.12–10,975,965.93)	1,108.37 (1,263.67–982.29)	99.49	–10.50	193,193.94 (296,407.61–84,589.95)	38.54 (59.13–16.87)	208,353.65 (278,184.17–159,776.49)	18.65 (24.90–14.30)	7.85	–51.61	645,318.39 (889,796.72–461,980.08)	128.73 (177.50–92.16)	1,315,005.11 (1,814,140.78–947,811.87)	117.69 (162.36–84.82)	103.78	–8.58
Low-middle SDI	13,633,512.31 (15,639,609.61–12,053,844.96)	1,173.88 (1,346.61–1,037.86)	19,294,374.47 (22,549,498.03–16,990,168.30)	1,004.33 (1,173.77–884.39)	41.52	–14.44	279,318.16 (359,430.34–165,886.16)	24.05 (30.95–14.28)	164,882.60 (201,922.98–136,373.94)	8.58 (10.51–7.10)	–40.97	–64.32	1,408,121.35 (1,971,577.28–989,432.90)	121.24 (169.76–85.19)	1,999,477.76 (2,824,152.47–1,403,051.21)	104.08 (147.01–73.03)	42.00	–14.16
Middle SDI	16,307,672.41 (18,198,647.25–14,694,740.23)	946.52 (1,056.28–852.90)	19,372,256.70 (22,006,847.37–17,250,307.89)	791.17 (898.77–704.51)	18.79	–16.41	290,375.73 (376,943.73–191,796.78)	16.85 (21.88–11.13)	104,452.18 (124,067.14–89,385.17)	4.27 (5.07–3.65)	–64.03	–74.66	1,708,493.04 (2,337,902.10–1,213,782.23)	99.16 (135.70–70.45)	2,031,129.22 (2,800,608.10–1,436,531.90)	82.95 (114.38–58.67)	18.88	–16.35
Congenital heart anomalies	11,787,060.94 (13,054,727.64–10,500,374.85)	221.00 (244.76–196.87)	15,774,456.86 (17,389,519.74–14,041,228.96)	199.90 (220.36–177.93)	33.83	–9.55	528,947.97 (679,086.63–310,319.52)	9.92 (12.73–5.82)	250,811.32 (304,084.49–207,821.56)	3.18 (3.85–2.63)	–52.58	–67.94	796,145.48 (1,220,017.54–466,915.44)	14.93 (22.87–8.75)	1,043,110.39 (1,608,663.11–598,139.77)	13.22 (20.39–7.58)	31.02	–11.45
Congenital musculoskeletal and limb anomalies	15,570,720.79 (19,071,446.35–12,578,431.70)	291.94 (357.57–235.83)	18,549,408.27 (22,636,856.78–15,159,832.56)	235.06 (286.86–192.11)	19.13	–19.48	18,901.90 (30,380.65–10,324.38)	0.35 (0.57–0.19)	13,599.83 (18,111.40–10,506.15)	0.17 (0.23–0.13)	–28.05	–51.43	2,269,527.27 (3,255,069.08–1,474,852.96)	42.55 (61.03–27.65)	2,719,295.31 (3,909,870.15–1,786,905.97)	34.46 (49.55–22.64)	19.82	–19.02
Digestive congenital anomalies	2,916,870.71 (3,529,983.16–2,301,685.77)	54.69 (66.18–43.15)	3,216,778.40 (3,837,827.08–2,608,176.62)	40.76 (48.63–33.05)	10.28	–25.47	75,201.12 (116,846.72–41,785.78)	1.41 (2.19–0.78)	48,483.15 (60,374.91–36,339.69)	0.61 (0.77–0.46)	–35.53	–56.74	135,240.23 (198,216.78–86,709.07)	2.54 (3.72–1.63)	150,159.86 (219,405.66–95,738.55)	1.90 (2.78–1.21)	11.03	–24.96
Down syndrome	1,658,220.07 (2,006,033.97–1,374,357.42)	31.09 (37.61–25.77)	1,566,169.18 (1,856,977.82–1,314,520.13)	19.85 (23.53–16.66)	–5.55	–36.15	31,009.31 (45,335.26–17,461.83)	0.58 (1.33–0.33)	29,265.01 (45,335.42–22,457.66)	0.37 (0.57–0.28)	–5.63	–36.21	179,857.34 (250,758.59–122,382.87)	3.37 (4.70–2.29)	171,215.97 (237,281.79–117,695.23)	2.17 (3.01–1.49)	–4.80	–35.66
Klinefelter syndrome	862,224.81 (1,100,112.05–654,887.70)	16.17 (20.63–12.28)	1,121,753.97 (1,432,229.39–854,998.12)	14.21 (18.15–10.83)	30.10	–12.12	–	–	–	–	–	–	4,784.66 (9,870.05–2,342.26)	0.09 (0.19–0.04)	6,559.54 (13,348.93–3,181.66)	0.08 (0.17–0.04)	37.10	–7.34
Neural tube defects	1,014,715.62 (1,202,529.28–840,038.30)	19.02 (22.55–15.75)	1,126,173.94 (1,305,569.15–965,137.52)	14.27 (16.54–12.23)	10.98	–24.97	111,543.24 (145,945.36–76,222.10)	2.09 (2.74–1.43)	56,360.70 (69,297.72–45,072.40)	0.71 (0.88–0.57)	–49.47	–66.03	298,375.49 (410,457.85–205,363.63)	5.59 (7.70–3.85)	333,190.32 (456,200.90–229,302.22)	4.22 (5.78–2.91)	11.67	–24.53
Orofacial clefts	2,937,706.51 (3,535,593.69–2,389,357.82)	55.08 (66.29–44.80)	4,124,006.77 (5,026,199.55–3,318,692.55)	52.26 (63.69–42.05)	40.38	–5.12	12,353.80 (22,916.99–4,489.85)	0.23 (0.43–0.08)	1,718.64 (4,409.48–484.75)	0.02 (0.06–0.01)	–86.09	–91.30	182,138.04 (275,757.38–111,524.76)	3.41 (5.17–2.09)	254,717.68 (386,562.68–156,367.95)	3.23 (4.90–1.98)	39.85	–5.48
Other chromosomal abnormalities	3,291,359.69 (3,769,647.85–2,886,306.97)	61.71 (70.68–54.12)	3,494,385.20 (3,986,006.77–3,082,193.45)	44.28 (50.51–39.06)	6.17	–28.25	18,886.49 (37,911.96–12,350.04)	0.35 (0.71–0.23)	21,324.51 (31,923.70–17,314.36)	0.27 (0.40–0.22)	12.91	–22.86	370,947.42 (507,437.38–259,882.70)	6.95 (9.51–4.87)	397,536.86 (543,218.17–280,079.77)	5.04 (6.88–3.55)	7.17	–27.57
Other congenital birth defects	7,885,329.83 (12,656,013.12–4,189,329.12)	147.84 (237.29–78.55)	12,829,860.16 (20,559,607.83–6,842,606.87)	162.58 (260.53–86.71)	62.71	9.97	142,462.18 (260,338.04–92,180.43)	2.67 (4.88–1.73)	101,888.19 (140,374.20–79,391.83)	1.29 (1.78–1.01)	–28.48	–51.69	1,121,885.69 (1,990,908.34–613,005.94)	21.03 (37.33–11.49)	1,841,189.78 (3,190,829.63–1,026,080.43)	23.33 (40.43–13.00)	64.12	10.92
Turner syndrome	416,580.16 (543,404.60–329,466.86)	7.81 (10.19–6.18)	531,783.59 (697,785.82–420,531.66)	6.74 (8.84–5.33)	27.65	–13.70	–	–	–	–	–	–	7,104.38 (12,357.71–3,289.38)	0.13 (0.23–0.06)	9,176.79 (15,926.38–4,254.19)	0.12 (0.20–0.05)	29.17	–12.70
Urogenital congenital anomalies	5,221,076.02 (6,516,683.92–4,188,738.44)	97.89 (122.18–78.53)	6,343,412.65 (7,900,494.11–5,069,614.30)	80.38 (100.12–64.24)	21.50	–17.89	9,679.14 (15,280.21–6,856.52)	0.18 (0.29–0.13)	7,495.23 (11,712.05–5,175.34)	0.09 (0.15–0.07)	–22.56	–50.00	189,402.60 (295,124.80–112,430.99)	3.55 (5.53–2.11)	236,688.63 (364,797.83–141,208.86)	3.00 (4.62–1.79)	24.97	–15.54

ASDR, age standard death rate; ASPR, age standard prevalence rate; ASYP, age standard YLD rate; SDI, socio-demographic index; YLD, years lived with disability.

Table S2 Global burden of congenital birth defects in terms of prevalence, death, and YLD across 21 GBD regions

Items	Prevalence						Death						YLD					
	1990		2021		Change		1990		2021		Change		1990		2021		Change	
	Number (person)	ASPR (/10 ⁵)	Number (person)	ASPR (/10 ⁵)	Number (%)	Rate (%)	Number (person)	ASDR (/10 ⁵)	Number (person)	ASDR (/10 ⁵)	Number (%)	Rate (%)	Number (person)	ASYR (/10 ⁵)	Number (person)	ASYR (/10 ⁵)	Number (%)	Rate (%)
Andean Latin America	321,239.78 (351,378.01–290,744.31)	845.51 (924.84–765.25)	491,320.81 (530,958.24–449,957.43)	742.93 (802.86–680.38)	52.95	-12.13	9,785.05 (12,739.70–5,498.17)	25.75 (33.53–14.47)	5,054.42 (6,421.41–3,857.67)	7.64 (9.71–5.83)	-48.35	-70.33	34,701.68 (46,849.29–24,491.39)	91.34 (123.31–64.46)	53,628.51 (71,923.11–38,416.54)	81.09 (108.75–58.09)	54.54	-11.22
Australasia	163,932.03 (179,613.11–148,652.50)	808.49 (885.83–733.14)	214,097.35 (234,045.95–194,891.24)	691.50 (755.93–629.46)	30.60	-14.47	941.30 (982.12–902.49)	4.64 (4.84–4.45)	605.47 (674.03–548.66)	1.96 (2.18–1.77)	-35.68	-57.76	17,892.00 (23,634.84–12,821.80)	88.24 (116.56–63.24)	23,695.85 (32,024.92–17,099.62)	76.53 (103.43–55.23)	32.44	-13.27
Caribbean	311,272.69 (341,838.31–281,017.32)	881.98 (968.59–796.25)	376,422.87 (410,825.97–339,719.35)	793.16 (865.65–715.82)	20.93	-10.07	6,839.74 (7,835.63–5,674.47)	19.38 (22.20–16.08)	4,873.23 (8,381.87–3,389.25)	10.27 (17.66–7.14)	-28.75	-47.01	33,066.01 (44,835.54–23,885.84)	93.69 (127.04–67.68)	40,559.84 (54,821.65–28,757.76)	85.46 (115.51–60.60)	22.66	-8.78
Central Asia	795,579.83 (869,532.12–721,952.88)	1,147.83 (1,254.52–1,041.60)	1,010,019.21 (1,103,679.90–919,984.02)	1,054.20 (1,151.96–960.23)	26.95	-8.16	7,865.30 (8,651.38–7,240.21)	11.35 (12.48–10.45)	7,076.18 (8,477.07–5,925.88)	7.39 (8.85–6.19)	-10.03	-34.89	80,133.70 (108,250.44–57,951.74)	115.61 (156.18–83.61)	104,976.82 (141,147.09–75,716.79)	109.57 (147.32–79.03)	31.00	-5.23
Central Europe	913,513.77 (1,015,834.34–823,746.40)	730.27 (812.07–658.51)	719,084.16 (808,863.98–642,020.89)	623.86 (701.75–557.00)	-21.28	-14.57	9,740.62 (10,260.39–9,181.04)	7.79 (8.20–7.34)	1,893.32 (2,168.24–1,643.74)	1.64 (1.88–1.43)	-80.56	-78.95	98,327.79 (13,037.13–71,249.95)	78.60 (104.22–56.96)	79,768.22 (106,562.53–57,413.07)	69.20 (92.45–49.81)	-18.88	-11.96
Central Latin America	2,081,823.24 (2,364,480.09–1,832,874.22)	1,266.25 (1,438.18–1,114.83)	2,413,830.52 (2,685,291.98–2,166,351.47)	954.08 (1,061.37–856.26)	15.95	-24.65	26,200.79 (28,527.39–23,594.57)	15.94 (17.35–14.35)	17,208.06 (21,466.34–13,855.14)	6.80 (8.48–5.48)	-34.32	-57.34	237,583.02 (326,171.55–167,392.59)	144.51 (198.39–101.82)	272,009.63 (367,446.51–192,406.95)	107.51 (145.23–76.05)	14.49	-25.60
Central Sub-Saharan Africa	673,708.41 (753,208.95–596,192.16)	1,225.76 (1,370.40–1,084.72)	1,482,906.23 (1,678,596.67–1,320,572.77)	1,082.98 (1,225.89–964.43)	120.11	-11.65	20,391.90 (35,362.96–8,794.96)	37.10 (64.34–16.00)	18,740.57 (28,591.18–13,005.49)	13.69 (20.88–9.50)	-8.10	-63.10	70,385.48 (95,224.21–49,875.12)	128.06 (173.25–90.74)	159,624.33 (219,298.06–114,755.97)	116.58 (160.16–83.81)	126.79	-8.97
East Asia	9,707,310.95 (10,725,185.08–8,700,862.69)	797.35 (880.96–714.69)	8,594,441.19 (9,582,236.33–7,707,478.12)	583.55 (650.62–523.33)	-11.46	-26.81	192,368.96 (258,808.06–128,215.10)	15.80 (21.26–10.53)	30,304.99 (37,350.61–25,063.32)	2.06 (2.54–1.70)	-84.25	-86.96	1,030,799.84 (1,400,625.31–736,572.60)	84.67 (115.05–60.50)	930,383.71 (1,277,927.50–659,862.83)	63.17 (86.77–44.80)	-9.74	-25.39
Eastern Europe	2,168,422.93 (2,402,416.37–1,956,322.59)	957.40 (1,060.71–863.75)	1,690,896.14 (1,896,007.99–1,510,457.96)	817.81 (917.01–730.54)	-22.02	-14.58	17,502.87 (18,248.80–16,807.45)	7.73 (8.06–7.42)	4,220.65 (4,494.74–3,897.69)	2.04 (2.17–1.89)	-75.89	-73.61	227,855.30 (303,654.87–164,323.97)	100.60 (134.07–72.55)	183,491.87 (247,284.48–130,643.89)	88.75 (119.60–63.19)	-19.47	-11.78
Eastern Sub-Saharan Africa	2,286,320.80 (2,566,933.61–2,025,385.53)	1,198.13 (1,345.18–1,061.38)	4,430,517.59 (5,024,547.05–3,926,058.05)	1,039.79 (1,179.20–921.40)	93.78	-13.22	72,427.65 (132,050.36–29,054.07)	37.96 (69.20–15.23)	67,700.66 (10,619.73–47,387.06)	15.89 (24.92–11.12)	-6.53	-58.14	236,774.88 (324,544.57–170,387.94)	124.08 (170.07–89.29)	470,359.55 (647,674.85–338,185.03)	110.39 (152.00–79.37)	98.65	-11.03
High-income Asia Pacific	1,841,707.59 (2,033,110.90–1,669,759.58)	1,062.24 (1,172.63–963.06)	1,475,530.77 (1,616,612.85–1,350,330.26)	795.66 (871.74–728.15)	-19.88	-25.10	6,695.70 (7,207.66–6,105.13)	3.86 (4.16–3.52)	1,759.49 (1,900.59–1,648.68)	0.95 (1.02–0.89)	-73.72	-75.39	196,091.28 (264,425.65–138,206.05)	113.10 (152.51–79.71)	149,962.83 (198,343.16–105,998.59)	80.87 (106.95–57.16)	-23.52	-28.50
High-income North America	2,044,927.35 (2,253,479.74–1,853,525.77)	726.67 (800.78–658.66)	2,277,610.08 (2,508,883.69–2,069,442.55)	615.28 (677.76–559.05)	11.38	-15.33	14,211.21 (14,525.13–13,920.72)	5.05 (5.16–4.95)	9,286.33 (9,879.47–8,552.58)	2.51 (2.67–2.31)	-34.65	-50.30	215,013.76 (289,218.26–153,904.80)	76.41 (102.77–54.69)	240,430.49 (320,395.41–175,059.11)	64.95 (86.55–47.29)	11.82	-14.99
North Africa and Middle East	4,204,708.45 (4,688,161.40–3,784,958.48)	1,239.63 (1,382.16–1,115.88)	6,590,554.89 (7,396,211.42–5,903,701.09)	1,057.87 (1,187.19–947.62)	56.74	-14.66	175,215.47 (212,693.01–83,010.96)	51.66 (62.71–24.47)	72,374.46 (85,423.14–60,222.40)	11.62 (13.71–9.67)	-58.69	-77.51	429,801.89 (565,432.81–310,169.01)	126.71 (172.60–91.44)	665,679.79 (908,106.89–476,359.89)	106.85 (145.76–76.46)	54.88	-15.68
Oceania	55,055.20 (60,920.50–49,775.36)	840.54 (930.09–759.94)	117,311.71 (131,062.05–105,935.02)	842.30 (941.03–760.61)	113.08	0.21	1,613.42 (2,167.12–664.00)	24.63 (33.09–10.14)	2,913.32 (4,061.86–1,389.43)	20.92 (29.16–9.98)	80.57	-15.06	5,689.16 (7,841.24–4,036.89)	86.86 (119.71–61.63)	12,225.44 (16,803.22–8,715.08)	87.78 (120.65–62.57)	114.89	1.06
South Asia	13,307,895.26 (15,556,065.24–11,692,210.43)	1,217.10 (1,422.71–1,069.33)	18,846,574.31 (22,472,286.54–1,6281,193.19)	1,020.63 (1,216.97–881.70)	41.62	-16.14	196,513.14 (250,159.44–136,898.05)	17.97 (22.88–12.52)	106,135.78 (148,159.69–81,419.60)	5.75 (8.02–4.41)	-45.99	-68.00	1,369,855.72 (1,903,016.82–943,327.96)	125.28 (174.04–86.27)	1,941,496.72 (2,788,765.70–1,325,260.97)	105.14 (151.02–71.77)	41.73	-16.08
Southeast Asia	4,327,061.45 (5,028,789.25–3,793,489.89)	929.54 (1,080.28–814.92)	5,569,553.51 (6,590,290.10–4,850,984.65)	797.58 (943.76–694.68)	28.71	-14.20	74,307.28 (96,773.93–40,630.99)	15.96 (20.79–8.73)	40,703.01 (49,318.00–34,466.89)	5.83 (7.06–4.94)	-45.22	-63.47	480,688.17 (682,765.60–335,149.23)	103.26 (146.67–72.00)	605,411.31 (861,280.66–421,495.50)	86.70 (123.34–60.36)	25.95	-16.04
Southern Latin America	444,016.70 (492,041.53–397,569.60)	896.31 (993.25–802.55)	538,968.61 (594,231.09–484,501.97)	796.18 (877.81–715.72)	21.38	-11.17	5,215.17 (5,446.20–5,009.09)	10.53 (10.99–10.11)	2,711.54 (3,217.81–2,292.35)	4.01 (4.75–3.39)	-48.01	-61.92	52,471.46 (71,460.85–37,542.20)	105.92 (144.25–75.78)	63,467.03 (86,119.81–45,108.43)	93.76 (127.22–66.64)	20.96	-11.49
Southern Sub-Saharan Africa	540,456.92 (584,608.99–492,272.87)	1,031.05 (1,115.28–939.13)	726,793.74 (791,374.66–660,308.48)	905.06 (985.48–822.26)	34.48	-12.22	5,458.40 (6,478.78–4,582.15)	10.41 (12.36–8.74)	5,207.67 (6,926.24–3,520.32)	6.48 (8.63–4.38)	-4.59	-37.75	48,671.04 (64,934.66–34,734.99)	92.85 (123.88–66.27)	67,147.67 (90,255.84–47,778.50)	83.62 (112.39–59.50)	37.96	-9.95
Tropical Latin America	1,378,600.52 (1,516,340.26–1,257,929.25)	903.69 (993.99–824.59)	1,680,350.30 (1,877,862.84–1,503,307.65)	738.53 (825.34–660.72)	21.89	-18.28	16,273.15 (18,587.47–13,782.32)	10.67 (12.18–9.03)	12,545.13 (15,008.51–10,501.77)	5.51 (6.60–4.62)	-22.91	-48.36	126,513.84 (169,755.09–91,098.63)	82.93 (111.28–59.72)	165,009.75 (220,593.18–118,400.40)	72.52 (96.95–52.04)	30.43	-12.55
Western Europe	3,244,938.01 (3,493,095.47–3,021,382.73)	844.13 (908.68–785.97)	3,336,076.56 (3,606,158.37–3,083,666.53)	762.72 (824.47–705.02)	2.81	-9.64	16,300.38 (16,585.91–16,029.29)	4.24 (4.31–4.17)	8,185.89 (8,656.24–7,678.99)	1.87 (1.98–1.76)	-49.78	-55.90	313,583.32 (415,974.62–226,258.62)	81.57 (108.21–58.86)	328,485.78 (434,287.30–234,726.76)	75.10 (99.29–53.67)	4.75	-7.94
Western Sub-Saharan Africa	2,416,113.54 (2,760,583.14–2,144,754.45)	1,250.84 (1,429.18–1,110.36)	5,736,740.72 (6,597,660.02–5,082,144.52)	1,171.17 (1,346.93–1,037.54)	137.44	-6.37	73,117.65 (102,181.42–26,713.62)	37.85 (52.90–13.83)	111,446.40 (141,369.22–79,256.36)	22.75 (28.86–16.18)	52.42	-39.89	249,509.28 (338,796.78–180,659.26)	129.17 (175.40–93.53)	605,025.99 (824,428.29–437,142.93)	123.52 (168.31–89.24)	142.49	-4.38

ASDR, age-standardized death rate; ASPR, age-standardized prevalence rate; ASYR, age-standardized YLD rate; GBD, Global Burden of Disease; YLD, years lived with disability.