

Figure S1 The proportion of mortality and DALYs rates for SIDS in different age groups in 1990 and 2021. (A) Deaths rate; (B) DALYs rate. DALYs, disability-adjusted life years; SIDS, sudden infant death syndrome; SDI, sociodemographic index.

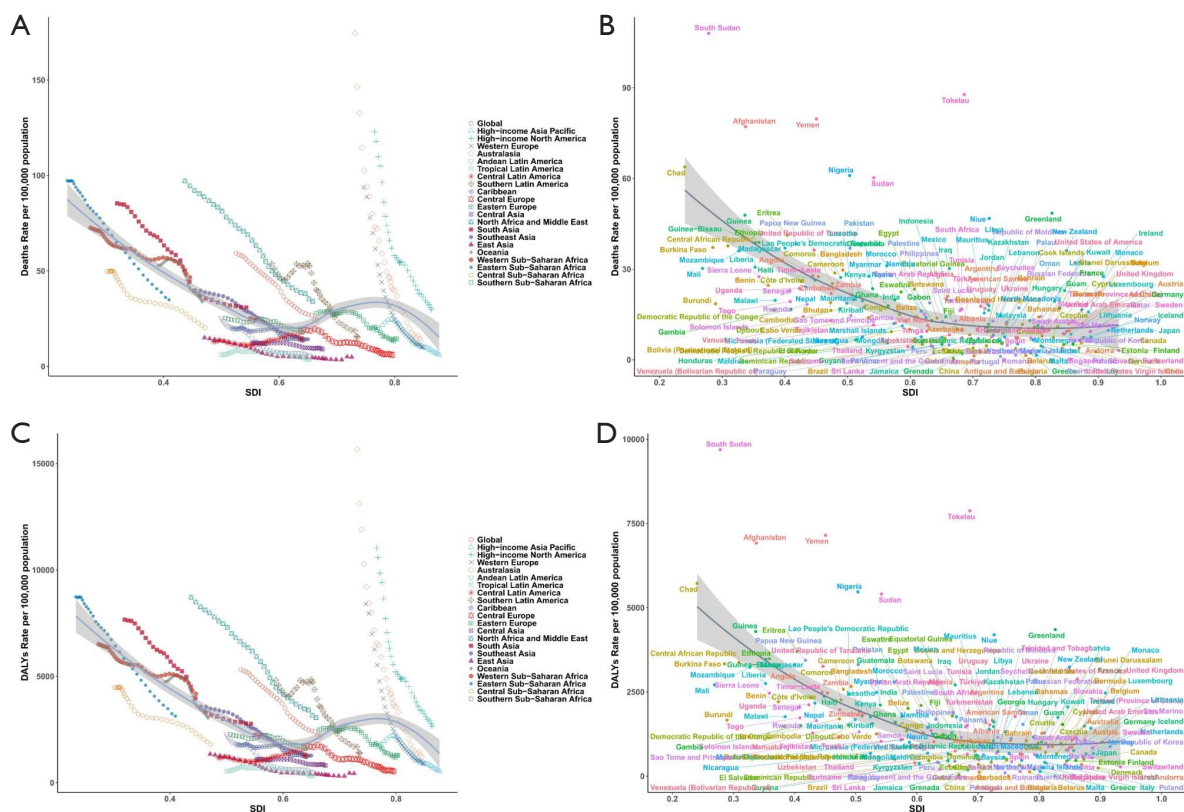


Figure S2 Analysis of the association between disease burden of SIDS and SDI in 21 regions from 1990 to 2021 and in 204 countries globally in 2021. (A) Deaths rate across 21 regions, 1990-2021. (B) Deaths rate across 204 countries and territories in 2021. (C) DALYs rate across 21 regions, 1990-2021. (D) DALYs rate across 204 countries and territories in 2021. SIDS, sudden infant death syndrome; SDI, sociodemographic index; DALYs, disability-adjusted life years.

Table S1 Deaths and DALYs of SIDS in 1990 and 2021 and their change trends from 1990 to 2021 at the national level

Location	1990				2021				1990-2021		
	Deaths cases, n (95% UI)	Deaths rate, n (95% UI)	DALYs, n (95% UI)	DALY rate, n (95% UI)	Deaths cases, n (95% UI)	Deaths rate, n (95% UI)	DALYs, n (95% UI)	DALY rate, n (95% UI)	Cases change of Death or DALYs, % (95% CI)	EAPC of Deaths rate, % (95% CI)	EAPC of DALY rate, % (95% CI)
Afghanistan	773.9 (373.6, 1467.8)	193.0 (93.2, 366.1)	69444.7 (33523.1, 131750.8)	17322.5 (8362.1, 32864.4)	897.2 (442.0, 1520.1)	77.1 (38.0, 130.7)	80496.5 (39650.8, 136428.9)	6919.5 (3408.4, 11727.5)	15.9 (-46.4, 163.3)	-2.4 (-2.9, -2.0)	-3.3 (-4.0, -2.7)
Albania	23.4 (6.8, 58.0)	29.5 (8.6, 73.1)	2098.9 (613.1, 5201.3)	2645.7 (772.8, 6556.6)	2.7 (1.2, 5.3)	9.9 (4.2, 19.2)	245.6 (105.3, 476.4)	885.5 (379.8, 1717.9)	-88.3 (-95.9, -63.6)	-3.4 (-3.6, -3.1)	-4.1 (-4.3, -3.9)
Algeria	391.4 (132.9, 921.7)	52.7 (17.9, 124.1)	35121.7 (11921.7, 82685.7)	4729.1 (1605.2, 11133.5)	190.0 (97.5, 310.7)	21.0 (10.8, 34.3)	17050.5 (8745.2, 27881.2)	1883.7 (966.2, 3080.3)	-51.5 (-77.8, 43.6)	-3.4 (-3.6, -3.1)	-2.6 (-2.7, -2.5)
American Samoa	0.3 (0.1, 0.5)	15.9 (6.2, 28.7)	24.3 (9.5, 43.9)	1427.7 (557.4, 2577.8)	0.1 (0.0, 0.1)	10.9 (5.0, 19.9)	6.5 (3.0, 11.8)	974.0 (445.7, 1781.2)	-73.4 (-87.2, -47.3)	-1.2 (-1.4, -1.1)	-1.4 (-1.7, -1.2)
Andorra	0.2 (0.1, 0.3)	32.3 (13.7, 53.8)	14.7 (6.3, 24.6)	2897.1 (1233.4, 4832.1)	0.0 (0.0, 0.0)	3.9 (1.1, 7.5)	1.6 (0.4, 3.1)	346.6 (95.4, 676.9)	-89.2 (-97.2, -70.7)	-5.0 (-5.3, -4.7)	-5.2 (-5.6, -4.7)
Angola	369.8 (158.0, 650.9)	80.7 (34.5, 142.0)	33179.6 (14183.6, 58399.2)	7239.5 (3094.7, 12742.1)	318.9 (144.2, 567.2)	27.5 (12.4, 48.9)	28604.6 (12939.2, 50883.4)	2468.1 (1116.4, 4390.3)	-13.8 (-56.8, 83.8)	-2.4 (-2.7, -2.2)	-3.2 (-3.5, -3.0)
Antigua and Barbuda	0.0 (0.0, 0.0)	0.0 (0.0, 0.0)	0.0 (0.0, 0.0)	0.0 (0.0, 0.0)	0.0 (0.0, 0.0)	0.0 (0.0, 0.0)	0.0 (0.0, 0.0)	0.0 (0.0, 0.0)	-49.7 (-68.8, -23.3)	-1.6 (-1.9, -1.3)	-1.2 (-1.7, -0.8)
Argentina	456.4 (319.0, 634.5)	67.6 (47.3, 94.0)	40954.6 (28626.4, 56945.1)	6069.6 (4242.5, 8439.4)	97.7 (67.9, 137.6)	18.4 (12.8, 25.9)	8773.6 (6093.4, 12352.7)	1654.1 (1148.8, 2328.9)	-78.6 (-87.5, -64.9)	-3.4 (-3.7, -3.1)	-3.9 (-4.3, -3.5)
Armenia	1.3 (0.6, 2.1)	1.7 (0.8, 2.8)	117.3 (53.3, 191.5)	156.6 (71.1, 255.6)	0.5 (0.3, 0.7)	1.3 (0.8, 2.1)	42.1 (25.7, 66.5)	120.9 (73.6, 190.9)	-64.1 (-83.9, 3.4)	-0.9 (-1.6, -0.2)	0.1 (-1.0, 1.3)
Australia	406.1 (374.4, 441.1)	161.0 (148.5, 174.9)	36431.7 (33590.3, 39574.1)	14447.0 (13320.2, 15693.1)	25.3 (17.6, 35.1)	8.6 (6.0, 12.0)	2272.5 (1576.1, 3149.6)	775.8 (538.0, 1075.2)	-93.8 (-95.7, -91.1)	-7.6 (-8.0, -7.2)	-8.0 (-8.5, -7.5)
Austria	116.8 (105.4, 128.3)	129.2 (116.6, 141.9)	10483.5 (9459.9, 11508.1)	11596.1 (10463.9, 12729.4)	8.1 (6.2, 10.3)	9.6 (7.3, 12.2)	726.4 (557.5, 927.2)	859.4 (659.6, 1097.0)	-93.1 (-94.8, -91.1)	-6.7 (-7.3, -6.2)	-7.8 (-8.2, -7.4)
Azerbaijan	14.0 (4.2, 37.2)	7.9 (2.3, 20.9)	1257.0 (373.4, 3339.0)	705.1 (209.4, 1873.1)	11.0 (4.7, 23.2)	8.3 (3.5, 17.4)	987.7 (422.6, 2080.8)	740.5 (316.8, 1560.0)	-21.5 (-74.3, 232.4)	-0.1 (-0.3, 0.0)	-0.1 (-0.4, 0.2)
Bahamas	1.0 (0.8, 1.4)	19.9 (14.3, 26.5)	94.0 (67.7, 124.9)	1787.2 (1287.3, 2375.1)	0.6 (0.4, 0.8)	14.2 (9.5, 20.2)	50.3 (33.7, 71.9)	1270.5 (850.9, 1814.0)	-46.5 (-66.3, -14.7)	-1.1 (-1.5, -0.7)	-1.7 (-2.3, -1.2)
Bahrain	3.9 (2.0, 6.8)	29.8 (15.2, 52.6)	346.2 (176.1, 610.0)	2677.0 (1361.5, 4717.3)	2.1 (1.2, 3.3)	11.8 (6.8, 18.9)	187.3 (108.1, 299.5)	1061.9 (612.8, 1698.3)	-45.9 (-71.5, 25.5)	-2.7 (-2.8, -2.6)	-2.8 (-3.0, -2.7)
Bangladesh	5129.9 (1996.1, 12232.1)	129.5 (50.4, 308.7)	460354.1 (179105.4, 1097610.6)	11618.2 (4520.2, 27700.9)	821.6 (308.5, 1734.2)	29.7 (11.1, 62.6)	73719.1 (27676.9, 155588.8)	2662.0 (999.4, 5618.4)	-84.0 (-91.9, -68.8)	-3.7 (-4.1, -3.2)	-4.8 (-5.2, -4.4)
Barbados	0.5 (0.4, 0.7)	13.3 (9.8, 18.4)	48.4 (35.5, 66.8)	1191.9 (875.1, 1647.1)	0.1 (0.1, 0.2)	5.3 (3.5, 8.0)	12.4 (8.2, 18.7)	476.5 (315.8, 716.1)	-74.3 (-84.6, -57.9)	-1.8 (-2.5, -1.1)	-3.3 (-4.2, -2.4)
Belarus	3.4 (2.1, 5.1)	2.4 (1.5, 3.5)	304.8 (191.9, 454.1)	211.2 (133.0, 314.7)	1.2 (0.7, 1.9)	1.4 (0.8, 2.3)	107.2 (61.0, 171.9)	127.4 (72.5, 204.2)	-64.8 (-82.9, -28.6)	-1.9 (-2.3, -1.6)	-2.4 (-2.9, -1.9)
Belgium	181.0 (163.5, 199.8)	147.4 (133.1, 162.7)	16237.9 (14668.4, 17927.9)	13224.6 (11946.4, 14601.0)	13.6 (9.5, 19.1)	11.9 (8.4, 16.7)	1218.8 (855.6, 1709.9)	1070.2 (751.3, 1501.5)	-92.5 (-94.9, -89.0)	-6.7 (-7.2, -6.2)	-8.1 (-8.4, -7.7)
Belize	4.9 (3.6, 6.8)	80.2 (58.7, 112.1)	439.3 (321.6, 614.0)	7194.8 (5266.1, 10055.4)	1.1 (0.7, 1.6)	14.4 (9.8, 21.0)	97.0 (66.5, 141.6)	1288.7 (883.9, 1881.2)	-77.9 (-86.7, -62.3)	-5.0 (-5.5, -4.4)	-5.7 (-6.5, -4.9)
Benin	108.4 (34.7, 263.5)	49.3 (15.8, 119.9)	9725.3 (3114.9, 23615.9)	4426.2 (1417.7, 10748.2)	122.9 (37.1, 314.9)	24.6 (7.4, 63.1)	11023.8 (3333.3, 28232.6)	2208.2 (667.7, 5655.3)	13.4 (-41.6, 131.8)	-1.9 (-2.1, -1.7)	-2.1 (-2.5, -1.8)
Bermuda	0.3 (0.2, 0.4)	36.5 (26.3, 49.1)	28.8 (20.7, 38.7)	3279.5 (2357.5, 4409.2)	0.0 (0.0, 0.1)	9.8 (6.8, 13.7)	4.3 (3.0, 6.1)	876.6 (611.1, 1232.0)	-85.0 (-90.1, -75.7)	-4.2 (-4.5, -3.8)	-4.3 (-4.9, -3.7)
Bhutan	15.6 (5.3, 38.4)	74.7 (25.4, 184.3)	1396.8 (475.0, 3446.8)	6704.6 (2280.2, 16544.8)	2.3 (1.0, 4.5)	19.0 (8.5, 36.5)	207.8 (92.8, 400.4)	1700.8 (759.2, 3277.6)	-85.1 (-95.7, -52.5)	-3.8 (-4.2, -3.4)	-5.0 (-5.4, -4.6)
Bolivia (Plurinational State of)	86.6 (33.7, 177.3)	40.2 (15.6, 82.2)	7774.2 (3020.1, 15913.4)	3606.0 (1400.9, 7381.3)	24.2 (12.3, 43.2)	10.1 (5.1, 18.1)	2168.4 (1106.1, 3879.0)	906.1 (462.2, 1620.9)	-72.1 (-87.9, -49.1)	-4.3 (-4.4, -4.2)	-4.5 (-4.7, -4.4)
Bosnia and Herzegovina	6.1 (2.0, 15.8)	9.1 (3.0, 23.5)	550.1 (182.0, 1414.7)	819.1 (271.0, 2106.3)	2.6 (0.6, 5.8)	9.3 (2.3, 20.9)	231.9 (58.1, 521.4)	833.3 (208.9, 1873.3)	-57.8 (-83.8, 9.5)	-1.2 (-1.6, -0.8)	-0.8 (-1.5, -0.2)
Botswana	7.1 (2.4, 15.7)	15.9 (5.4, 35.2)	634.8 (216.2, 1409.2)	1424.3 (485.1, 3161.7)	6.5 (2.0, 16.0)	13.8 (4.3, 33.9)	584.2 (183.9, 1438.7)	1235.1 (388.7, 3041.4)	-8.0 (-57.7, 75.6)	-0.7 (-0.8, -0.6)	-0.5 (-0.5, -0.4)
Brazil	187.5 (150.7, 220.4)	6.0 (4.8, 7.0)	16820.1 (13517.5, 19774.2)	536.1 (430.9, 630.3)	113.1 (86.0, 143.9)	3.4 (2.6, 4.4)	10150.9 (7712.5, 12914.2)	308.8 (234.6, 392.8)	-39.7 (-57.3, -17.7)	-0.4 (-0.9, 0.2)	-1.7 (-2.4, -1.0)
Brunei Darussalam	0.8 (0.1, 1.8)	11.9 (1.0, 25.9)	73.8 (6.2, 160.3)	1071.2 (90.6, 2326.7)	0.5 (0.0, 1.2)	7.8 (0.8, 20.3)	42.6 (4.1, 110.6)	701.1 (68.3, 1819.7)	-42.3 (-80.0, 18.0)	-1.3 (-1.4, -1.2)	-1.4 (-1.5, -1.2)
Bulgaria	6.1 (4.5, 8.1)	6.0 (4.4, 8.0)	544.2 (403.2, 729.8)	536.1 (397.2, 718.8)	2.2 (1.3, 3.6)	3.7 (2.3, 6.2)	194.9 (120.0, 322.7)	333.3 (205.3, 552.0)	-64.2 (-79.3, -39.6)	0.1 (-0.6, 0.8)	-2.1 (-2.7, -1.5)
Burkina Faso	317.1 (120.6, 621.2)	74.4 (28.3, 145.8)	28452.7 (10827.7, 55735.9)	6679.0 (2541.7, 13083.5)	334.7 (115.5, 838.7)	37.2 (12.8, 93.2)	30025.3 (10364.4, 75225.5)	3335.1 (1151.2, 8355.7)	5.5 (-57.4, 92.9)	-2.5 (-2.9, -2.1)	-3.4 (-4.0, -2.9)
Burundi	183.7 (63.8, 371.7)	76.0 (26.4, 153.8)	16482.2 (5724.0, 33358.3)	6819.5 (2368.3, 13802.0)	83.3 (30.4, 172.3)	18.5 (6.8, 38.4)	7472.8 (2725.9, 15453.2)	1664.3 (607.1, 3441.7)	-54.7 (-84.0, -1.8)	-3.6 (-4.2, -2.9)	-5.1 (-5.9, -4.3)
Cabo Verde	7.3 (3.6, 12.8)	60.2 (30.0, 105.1)	655.8 (326.6, 1145.4)	5400.5 (2690.1, 9433.0)	1.2 (0.6, 2.1)	14.0 (7.4, 25.0)	105.9 (55.9, 189.1)	1254.6 (662.4, 2240.0)	-83.8 (-92.2, -67.3)	-4.4 (-4.6, -4.1)	-4.8 (-5.2, -4.5)
Cambodia	250.7 (96.7, 501.8)	62.9 (24.3, 125.9)	22506.3 (8680.2, 45042.1)	5646.6 (2177.8, 11300.5)	57.2 (23.0, 121.6)	16.4 (6.6, 34.8)	5136.3 (2069.3, 10916.8)	1469.4 (592.0, 3123.0)	-77.2 (-91.3, -45.0)	-4.4 (-5.0, -3.8)	-5.9 (-6.6, -5.2)
Cameroon	183.6 (69.6, 413.1)	41.0 (15.5, 92.2)	16474.0 (6243.5, 37053.4)	3677.4 (1393.7, 8271.1)	287.2 (112.6, 604.9)	28.7 (11.3, 60.5)	25763.9 (10101.2, 54240.2)	2578.4 (1010.9, 5428.2)	56.4 (-15.6, 229.7)	-0.6 (-0.9, -0.4)	-0.9 (-1.2, -0.6)
Canada	325.3 (289.8, 361.2)	82.0 (73.0, 91.0)	29193.1 (26004.9, 32414.3)	7354.3 (6551.1, 8165.8)	20.7 (14.1, 29.0)	5.7 (3.9, 7.9)	1855.6 (1266.6, 2605.4)	507.2 (346.2, 712.2)	-93.6 (-95.8, -91.0)	-6.9 (-7.4, -6.4)	-8.2 (-8.8, -7.6)
Central African Republic	71.7 (21.3, 176.7)	61.9 (18.4, 152.7)	6429.2 (1914.8, 15852.4)	5557.0 (1655.0, 13701.8)	67.4 (23.8, 152.5)	37.7 (13.3, 85.2)	6047.4 (2140.1, 13683.5)	3379.0 (1195.8, 7645.7)	-5.9 (-62.2, 150.1)	-1.3 (-1.5, -1.1)	-1.6 (-1.9, -1.4)
Chad	263.7 (116.2, 532.9)	90.1 (39.7, 182.0)	23658.6 (10423.2, 47807.7)	8081.6 (3560.5, 16330.8)	515.2 (231.2, 930.4)	63.8 (28.6, 115.2)	46213.0 (20745.7, 83493.7)	5723.0 (2569.2, 10339.9)	95.4 (1.1, 299.3)	-0.9 (-1.0, -0.8)	-1.2 (-1.2, -1.1)

Table S1 (continued)

Table S1 (continued)

Location	1990				2021				1990-2021		
	Deaths cases, n (95% UI)	Deaths rate, n (95% UI)	DALYs, n (95% UI)	DALY rate, n (95% UI)	Deaths cases, n (95% UI)	Deaths rate, n (95% UI)	DALYs, n (95% UI)	DALY rate, n (95% UI)	Cases change of Death or DALYs, % (95% CI)	EAPC of Deaths rate, % (95% CI)	EAPC of DALY rate, % (95% CI)
Chile	78.2 (64.6, 94.5)	26.2 (21.6, 31.7)	7014.5 (5796.7, 8485.6)	2349.6 (1941.7, 2842.4)	14.6 (10.8, 18.5)	7.2 (5.3, 9.1)	1312.4 (969.5, 1660.1)	649.0 (479.4, 821.0)	-81.3 (-87.2, -73.8)	-2.7 (-3.7, -1.6)	-3.7 (-5.4, -2.0)
China	3298.1 (1775.6, 5291.8)	14.7 (7.9, 23.6)	295849.4 (159278.8, 474653.7)	1321.6 (711.5, 2120.4)	532.1 (221.1, 904.1)	4.6 (1.9, 7.9)	47742.4 (19838.0, 81110.0)	415.5 (172.7, 706.0)	-83.9 (-93.0, -61.2)	-4.9 (-5.3, -4.5)	-4.9 (-5.6, -4.2)
Colombia	84.8 (67.7, 103.9)	9.5 (7.6, 11.7)	7612.2 (6075.5, 9319.8)	856.7 (683.8, 1048.9)	47.9 (31.5, 70.4)	7.1 (4.7, 10.5)	4296.1 (2828.9, 6321.3)	640.1 (421.5, 941.9)	-43.6 (-64.4, -12.8)	-0.7 (-1.2, -0.2)	-1.7 (-2.3, -1.1)
Comoros	13.9 (5.7, 29.2)	75.6 (30.9, 158.1)	1249.9 (511.9, 2614.8)	6778.9 (2776.4, 14181.5)	4.2 (1.5, 9.5)	25.2 (9.1, 57.6)	372.6 (134.9, 852.4)	2258.4 (817.4, 5166.8)	-70.2 (-88.3, -40.1)	-3.3 (-3.6, -3.1)	-4.0 (-4.3, -3.6)
Congo	28.4 (8.6, 74.5)	32.9 (9.9, 86.4)	2544.6 (767.4, 6678.6)	2951.6 (890.2, 7746.8)	18.7 (7.2, 42.3)	15.0 (5.8, 34.0)	1674.9 (645.4, 3798.3)	1343.3 (517.6, 3046.3)	-34.2 (-62.0, 64.3)	-2.4 (-2.5, -2.3)	-2.7 (-2.9, -2.6)
Cook Islands	0.1 (0.0, 0.2)	19.4 (7.2, 36.4)	7.5 (2.8, 14.2)	1739.6 (646.1, 3267.7)	0.0 (0.0, 0.1)	11.7 (2.2, 24.5)	2.3 (0.4, 4.8)	1050.7 (195.3, 2200.5)	-69.5 (-94.0, -22.8)	-3.5 (-4.1, -3.0)	-4.0 (-4.9, -3.2)
Costa Rica	6.3 (4.8, 8.1)	7.8 (5.9, 10.1)	562.0 (427.5, 726.7)	698.5 (531.5, 903.3)	2.1 (1.1, 4.5)	3.9 (2.1, 8.2)	190.1 (102.0, 402.6)	346.6 (186.0, 734.0)	-66.2 (-83.6, -25.6)	-2.1 (-2.3, -1.8)	-2.5 (-2.8, -2.3)
Croatia	13.9 (10.9, 17.2)	24.8 (19.5, 30.7)	1249.0 (981.1, 1544.2)	2226.8 (1749.2, 2753.2)	3.9 (2.6, 6.3)	10.9 (7.3, 17.8)	346.1 (229.5, 563.7)	982.1 (651.1, 1599.5)	-72.3 (-82.3, -54.4)	-2.3 (-2.5, -2.1)	-2.8 (-3.0, -2.6)
Cuba	4.8 (3.8, 6.1)	2.7 (2.1, 3.4)	431.5 (340.7, 548.2)	240.8 (190.1, 305.9)	0.5 (0.3, 0.7)	0.5 (0.3, 0.7)	46.0 (29.7, 67.3)	45.7 (29.5, 66.9)	-89.3 (-93.5, -83.8)	-3.8 (-4.5, -3.2)	-5.4 (-6.2, -4.6)
Cyprus	7.1 (2.2, 13.5)	52.3 (16.2, 100.3)	633.7 (196.2, 1214.0)	4697.1 (1454.2, 8997.6)	1.6 (0.7, 3.1)	10.9 (4.7, 20.9)	147.1 (63.6, 281.5)	980.5 (423.8, 1876.0)	-76.8 (-92.9, -22.7)	-5.0 (-5.1, -4.8)	-5.3 (-5.5, -5.1)
Czechia	25.3 (20.2, 31.5)	19.8 (15.8, 24.7)	2266.6 (1809.9, 2824.2)	1775.9 (1418.1, 2212.8)	7.9 (5.1, 11.7)	7.4 (4.8, 10.9)	709.3 (459.2, 1052.6)	660.9 (427.9, 980.8)	-68.7 (-81.5, -48.8)	-2.6 (-2.8, -2.3)	-3.1 (-3.4, -2.7)
Côte d'Ivoire	316.0 (129.5, 599.9)	61.6 (25.2, 116.9)	28355.5 (11620.5, 53825.7)	5526.7 (2264.9, 10491.1)	235.4 (96.2, 516.6)	25.9 (10.6, 56.8)	21118.4 (8628.9, 46345.9)	2323.6 (949.4, 5099.2)	-25.5 (-68.4, 40.9)	-2.1 (-2.3, -1.8)	-2.5 (-2.8, -2.2)
Democratic People's Republic of Korea	65.1 (22.3, 155.2)	12.5 (4.3, 29.8)	5842.8 (2002.2, 13920.5)	1122.2 (384.5, 2673.6)	27.4 (12.0, 54.5)	9.3 (4.1, 18.5)	2456.9 (1078.7, 4895.5)	835.0 (366.6, 1663.8)	-58.0 (-87.8, 51.4)	-0.5 (-0.7, -0.3)	-0.5 (-0.8, -0.2)
Democratic Republic of the Congo	687.3 (174.7, 1750.1)	41.2 (10.5, 105.0)	61671.3 (15684.9, 156985.6)	3699.5 (940.9, 9417.0)	451.3 (168.0, 969.9)	16.4 (6.1, 35.2)	40493.9 (15073.9, 86960.6)	1470.4 (547.3, 3157.6)	-34.3 (-68.0, 104.7)	-2.2 (-2.5, -1.9)	-3.0 (-3.3, -2.7)
Denmark	14.2 (11.4, 17.5)	22.9 (18.4, 28.1)	1276.1 (1025.5, 1569.7)	2053.1 (1649.9, 2525.4)	1.7 (1.2, 2.4)	2.7 (1.9, 3.7)	152.3 (107.1, 211.5)	242.1 (170.2, 336.1)	-88.1 (-92.2, -81.3)	-5.4 (-6.2, -4.7)	-7.2 (-7.6, -6.8)
Djibouti	4.6 (1.1, 12.9)	31.5 (7.6, 89.0)	410.9 (99.7, 1161.0)	2824.7 (685.3, 7981.1)	5.0 (1.6, 12.1)	16.9 (5.4, 40.9)	446.0 (143.7, 1082.2)	1513.0 (487.4, 3671.0)	8.6 (-41.8, 169.8)	-1.5 (-1.8, -1.2)	-2.3 (-2.6, -2.0)
Dominica	0.1 (0.0, 0.2)	5.3 (2.5, 10.0)	8.8 (4.1, 16.4)	478.6 (226.1, 898.5)	0.0 (0.0, 0.1)	5.6 (2.4, 12.0)	3.2 (1.4, 6.9)	504.5 (211.8, 1077.6)	-63.2 (-88.8, -9.1)	-0.0 (-0.1, 0.1)	0.2 (0.1, 0.3)
Dominican Republic	17.7 (6.4, 40.1)	8.2 (3.0, 18.6)	1591.3 (573.1, 3597.7)	739.2 (266.2, 1671.1)	10.7 (4.8, 20.1)	5.1 (2.3, 9.6)	960.0 (432.8, 1804.6)	459.2 (207.0, 863.2)	-39.7 (-74.5, 51.8)	-1.6 (-1.8, -1.4)	-1.1 (-1.4, -0.9)
Ecuador	42.8 (29.3, 65.8)	14.9 (10.2, 23.0)	3836.8 (2627.6, 5909.2)	1338.5 (916.6, 2061.4)	9.8 (6.2, 15.1)	3.1 (2.0, 4.8)	878.2 (559.2, 1357.3)	276.4 (176.0, 427.1)	-77.1 (-87.3, -58.3)	-5.3 (-6.0, -4.5)	-6.0 (-7.2, -4.7)
Egypt	1942.7 (946.5, 3487.6)	107.6 (52.4, 193.2)	174311.0 (84939.9, 312908.3)	9657.8 (4706.2, 17336.9)	600.3 (303.4, 1003.5)	23.4 (11.8, 39.1)	53871.9 (27234.1, 90044.4)	2098.6 (1060.9, 3507.8)	-69.1 (-87.0, -32.4)	-5.2 (-5.4, -5.1)	-5.2 (-5.5, -4.9)
El Salvador	20.5 (8.4, 37.6)	12.3 (5.1, 22.6)	1840.8 (755.2, 3370.3)	1105.7 (453.6, 2024.5)	6.5 (2.5, 13.1)	5.6 (2.1, 11.3)	581.8 (222.6, 1178.3)	501.8 (192.0, 1016.3)	-68.4 (-87.1, 1.6)	-2.7 (-2.8, -2.6)	-2.6 (-2.8, -2.5)
Equatorial Guinea	17.4 (8.1, 31.8)	91.9 (42.9, 168.1)	1560.0 (728.1, 2854.8)	8246.9 (3849.1, 15092.1)	7.3 (2.7, 15.6)	19.9 (7.4, 42.7)	650.9 (242.3, 1396.7)	1786.2 (665.0, 3833.0)	-58.3 (-85.0, 4.5)	-4.5 (-4.8, -4.1)	-5.5 (-5.7, -5.2)
Eritrea	121.2 (48.4, 296.3)	87.2 (34.9, 213.2)	10874.4 (4345.6, 26591.6)	7826.6 (3127.7, 19138.8)	78.0 (34.3, 147.7)	41.3 (18.2, 78.1)	7000.6 (3078.7, 13252.1)	3702.6 (1628.3, 7008.9)	-35.6 (-74.7, 51.2)	-1.9 (-2.1, -1.8)	-2.3 (-2.5, -2.1)
Estonia	5.1 (3.6, 7.3)	23.2 (16.3, 32.9)	461.2 (324.5, 654.5)	2077.2 (1461.5, 2947.9)	0.7 (0.4, 1.0)	5.0 (3.4, 7.3)	58.9 (39.5, 85.9)	450.5 (302.3, 657.5)	-87.2 (-92.6, -77.9)	-3.6 (-4.2, -2.9)	-5.1 (-5.9, -4.4)
Eswatini	9.9 (3.1, 21.3)	32.3 (10.2, 69.0)	892.6 (282.2, 1907.9)	2898.1 (916.1, 6194.4)	6.3 (1.6, 17.7)	22.4 (5.8, 62.7)	569.5 (146.4, 1589.5)	2013.9 (517.6, 5621.1)	-36.2 (-83.2, 37.9)	-1.5 (-1.7, -1.3)	-1.0 (-1.2, -0.8)
Ethiopia	3557.7 (1410.2, 7897.4)	160.8 (63.7, 356.9)	319247.8 (126505.0, 708720.2)	14427.9 (5717.2, 32029.5)	1300.0 (627.8, 2297.6)	38.8 (18.8, 68.6)	116634.4 (56321.0, 206189.4)	3484.9 (1682.8, 6160.6)	-63.5 (-79.1, -35.9)	-3.3 (-3.7, -2.9)	-4.4 (-4.8, -3.9)
Fiji	3.0 (1.0, 6.0)	16.1 (5.5, 32.5)	266.8 (91.2, 538.0)	1445.3 (494.1, 2913.6)	1.8 (0.8, 3.3)	10.2 (4.6, 18.5)	164.2 (73.7, 296.4)	916.9 (411.3, 1655.2)	-38.5 (-71.1, 31.0)	-1.1 (-1.3, -0.9)	-1.6 (-1.8, -1.4)
Finland	19.2 (16.0, 22.6)	29.7 (24.7, 34.9)	1722.4 (1433.1, 2024.1)	2668.3 (2220.1, 3135.6)	2.5 (1.9, 3.3)	5.2 (3.9, 6.9)	224.8 (170.3, 297.2)	467.2 (354.0, 617.7)	-87.0 (-90.7, -82.1)	-3.8 (-4.5, -3.2)	-5.3 (-5.6, -5.0)
France	1171.7 (1085.7, 1260.6)	154.2 (142.9, 165.9)	105126.0 (97404.5, 113105.3)	13836.4 (12820.1, 14886.6)	117.3 (90.8, 153.5)	17.1 (13.2, 22.4)	10531.1 (8146.2, 13777.7)	1533.5 (1186.2, 2006.3)	-90.0 (-92.4, -86.7)	-6.2 (-6.8, -5.6)	-6.7 (-7.5, -6.0)
Gabon	8.7 (3.3, 19.7)	25.8 (9.7, 58.2)	784.8 (295.7, 1767.5)	2317.5 (873.2, 5219.8)	5.5 (2.2, 10.8)	13.0 (5.3, 25.7)	490.7 (201.2, 971.8)	1163.2 (477.0, 2303.5)	-37.5 (-66.8, 38.4)	-1.8 (-1.9, -1.6)	-1.6 (-1.9, -1.4)
Gambia	17.8 (8.7, 31.7)	42.0 (20.5, 74.9)	1593.2 (777.2, 2839.7)	3769.3 (1838.6, 6718.2)	12.5 (6.4, 21.3)	16.7 (8.5, 28.5)	1121.2 (572.0, 1911.8)	1498.9 (764.7, 2555.9)	-29.6 (-67.3, 35.4)	-2.1 (-2.4, -1.9)	-2.9 (-3.2, -2.6)
Georgia	0.0 (0.0, 0.0)	0.0 (0.0, 0.0)	1.0 (0.6, 1.6)	1.2 (0.7, 1.8)	3.7 (2.3, 5.4)	8.1 (5.2, 12.0)	328.4 (210.8, 486.8)	728.4 (467.7, 1080.0)	32211.8 (16425.9, 69848.7)	26.2 (22.1, 30.5)	33.4 (26.8, 40.2)
Germany	1075.3 (986.5, 1167.1)	121.8 (111.7, 132.2)	96474.8 (88501.4, 104715.9)	10923.7 (10020.8, 11856.8)	87.8 (65.5, 116.1)	11.2 (8.4, 14.9)	7881.7 (5880.8, 10419.7)	1008.9 (752.8, 1333.7)	-91.8 (-94.2, -89.0)	-6.4 (-6.9, -6.0)	-7.7 (-7.9, -7.6)
Ghana	264.9 (125.4, 457.2)	46.2 (21.9, 79.8)	23763.4 (11253.8, 41031.5)	4147.7 (1964.2, 7161.6)	167.9 (71.1, 324.6)	17.9 (7.6, 34.5)	15065.4 (6375.0, 29127.1)	1601.6 (677.7, 3096.4)	-36.6 (-74.4, 30.3)	-2.6 (-2.7, -2.4)	-3.0 (-3.3, -2.8)
Greece	11.3 (9.2, 13.6)	10.9 (8.9, 13.1)	1012.3 (823.7, 1218.0)	979.1 (796.7, 1178.0)	1.9 (1.4, 2.7)	2.3 (1.6, 3.3)	173.1 (121.8, 245.0)	209.0 (147.1, 295.8)	-82.9 (-88.5, -74.8)	-4.3 (-4.8, -3.7)	-5.3 (-5.8, -4.7)

Table S1 (continued)

Table S1 (continued)

Location	1990				2021				1990-2021		
	Deaths cases, n (95% UI)	Deaths rate, n (95% UI)	DALYs, n (95% UI)	DALY rate, n (95% UI)	Deaths cases, n (95% UI)	Deaths rate, n (95% UI)	DALYs, n (95% UI)	DALY rate, n (95% UI)	Cases change of Death or DALYs, % (95% CI)	EAPC of Deaths rate, % (95% CI)	EAPC of DALY rate, % (95% CI)
Greenland	1.6 (0.6, 3.1)	136.8 (54.2, 265.8)	144.0 (57.1, 279.8)	12272.3 (4865.1, 23845.3)	0.4 (0.2, 0.6)	48.5 (26.3, 79.3)	33.7 (18.3, 55.1)	4353.5 (2360.3, 7117.2)	-76.6 (-89.3, -43.0)	-3.3 (-3.5, -3.2)	-3.3 (-3.5, -3.1)
Grenada	0.2 (0.2, 0.3)	9.5 (6.8, 13.2)	20.5 (14.6, 28.4)	854.4 (611.2, 1185.3)	0.0 (0.0, 0.0)	0.0 (0.0, 0.0)	0.0 (0.0, 0.0)	2.2 (1.4, 3.2)	-99.9 (-99.9, -99.8)	-10.7 (-13.4, -8.0)	-14.8 (-18.7, -10.8)
Guam	0.6 (0.3, 1.1)	17.5 (6.9, 31.0)	57.2 (22.7, 101.4)	1570.5 (622.7, 2781.7)	0.3 (0.1, 0.5)	11.3 (5.7, 20.3)	26.6 (13.3, 47.7)	1013.2 (507.6, 1818.6)	-53.5 (-75.9, -20.6)	-0.9 (-1.0, -0.8)	-1.0 (-1.2, -0.8)
Guatemala	93.9 (71.4, 129.0)	28.6 (21.7, 39.2)	8423.4 (6406.4, 11581.5)	2561.7 (1948.3, 3522.2)	69.0 (51.0, 94.0)	23.5 (17.4, 32.0)	6187.9 (4578.8, 8432.8)	2109.8 (1561.1, 2875.2)	-26.5 (-52.4, 12.3)	-0.9 (-1.4, -0.4)	0.4 (-0.2, 1.0)
Guinea	287.8 (131.1, 494.3)	108.2 (49.3, 185.7)	25828.9 (11768.2, 44358.5)	9705.7 (4422.2, 16668.6)	226.4 (98.2, 426.0)	47.8 (20.8, 90.0)	20308.6 (8812.5, 38211.9)	4292.7 (1862.7, 8076.9)	-21.4 (-61.7, 49.4)	-2.0 (-2.2, -1.8)	-2.5 (-2.8, -2.2)
Guinea-Bissau	39.2 (17.6, 68.5)	92.5 (41.5, 161.7)	3518.6 (1579.9, 6148.7)	8304.0 (3728.5, 14511.0)	26.7 (12.0, 48.4)	38.7 (17.4, 70.1)	2399.7 (1080.0, 4344.9)	3472.2 (1562.6, 6286.7)	-31.8 (-66.3, 36.6)	-2.0 (-2.2, -1.8)	-2.4 (-2.7, -2.2)
Guyana	3.2 (2.0, 4.6)	12.5 (7.9, 18.1)	283.4 (177.6, 409.7)	1125.4 (705.1, 1626.8)	0.8 (0.5, 1.2)	5.1 (3.1, 7.8)	67.7 (40.7, 103.4)	458.2 (275.5, 699.9)	-76.1 (-87.4, -53.9)	-2.3 (-2.5, -2.1)	-2.4 (-2.8, -2.1)
Haiti	117.7 (47.2, 283.8)	50.1 (20.1, 120.8)	10559.4 (4238.6, 25470.3)	4496.6 (1804.9, 10846.1)	86.4 (34.0, 180.2)	26.4 (10.4, 55.0)	7750.5 (3054.3, 16172.1)	2366.5 (932.6, 4937.9)	-26.6 (-71.4, 64.3)	-2.0 (-2.1, -1.8)	-2.3 (-2.5, -2.1)
Honduras	32.3 (12.8, 65.1)	18.8 (7.4, 37.8)	2900.3 (1144.5, 5841.0)	1685.2 (665.0, 3394.0)	14.3 (3.9, 33.3)	6.6 (1.8, 15.2)	1287.3 (351.6, 2987.1)	589.1 (160.9, 1367.1)	-55.6 (-79.5, -13.2)	-3.6 (-3.8, -3.4)	-3.8 (-4.1, -3.6)
Hungary	31.9 (25.4, 38.3)	25.8 (20.6, 31.0)	2857.2 (2282.7, 3431.7)	2312.3 (1847.3, 2777.2)	11.5 (7.8, 17.4)	13.0 (8.8, 19.5)	1035.3 (703.6, 1557.8)	1164.4 (791.3, 1752.0)	-63.8 (-76.1, -43.6)	-0.9 (-1.5, -0.4)	-2.6 (-2.8, -2.3)
Iceland	3.1 (2.7, 3.6)	68.7 (58.5, 79.3)	281.8 (240.0, 325.0)	6167.8 (5252.4, 7113.6)	0.3 (0.3, 0.4)	7.4 (5.6, 9.6)	30.5 (23.2, 39.5)	664.7 (506.0, 862.1)	-89.2 (-92.1, -85.0)	-5.7 (-6.2, -5.2)	-7.0 (-7.1, -6.8)
India	15416.2 (7194.6, 28221.1)	65.1 (30.4, 119.1)	1383519.1 (645646.9, 2532935.2)	5839.2 (2725.0, 10690.3)	4250.7 (2084.0, 7002.2)	19.8 (9.7, 32.6)	381394.9 (187003.3, 628218.3)	1778.3 (871.9, 2929.2)	-72.4 (-87.7, -38.8)	-3.3 (-3.7, -2.9)	-4.2 (-4.7, -3.7)
Indonesia	2225.3 (896.5, 4131.7)	49.6 (20.0, 92.1)	199819.3 (80511.2, 370907.1)	4453.1 (1794.3, 8266.0)	617.4 (267.1, 1005.1)	14.2 (6.2, 23.2)	55428.2 (23981.0, 90205.5)	1278.2 (553.0, 2080.1)	-72.3 (-85.5, -47.6)	-3.5 (-3.8, -3.2)	-4.4 (-4.6, -4.3)
Iran (Islamic Republic of)	1133.9 (576.0, 2052.6)	73.7 (37.5, 133.5)	101737.8 (51684.0, 184122.5)	6615.1 (3360.5, 11971.8)	73.1 (40.6, 122.7)	6.9 (3.9, 11.6)	6562.7 (3648.0, 11014.5)	622.9 (346.2, 1045.4)	-93.6 (-97.1, -85.9)	-4.6 (-5.2, -4.1)	-4.3 (-5.2, -3.4)
Iraq	512.7 (262.8, 866.6)	77.5 (39.7, 131.0)	46004.5 (23581.1, 77758.3)	6954.1 (3564.5, 11754.0)	249.0 (124.4, 419.6)	30.2 (15.1, 50.9)	22342.6 (11158.0, 37647.7)	2708.2 (1352.5, 4563.3)	-51.4 (-74.3, 10.6)	-3.1 (-3.2, -2.9)	-3.5 (-3.7, -3.2)
Ireland	71.1 (64.5, 78.1)	131.6 (119.3, 144.5)	6382.3 (5787.9, 7009.5)	11806.9 (10707.2, 12967.1)	9.4 (6.6, 13.1)	16.5 (11.6, 23.1)	841.3 (588.8, 1173.7)	1484.1 (1038.6, 2070.4)	-86.8 (-90.7, -81.0)	-6.1 (-6.4, -5.7)	-6.4 (-6.8, -6.1)
Israel	42.6 (28.3, 55.6)	41.4 (27.5, 54.1)	3818.4 (2537.7, 4986.2)	3718.2 (2471.1, 4855.4)	8.4 (6.0, 11.3)	4.6 (3.3, 6.2)	753.3 (540.6, 1014.0)	411.9 (295.6, 554.5)	-80.3 (-87.2, -65.7)	-5.6 (-5.8, -5.3)	-6.1 (-6.4, -5.7)
Italy	74.6 (66.0, 83.5)	13.5 (11.9, 15.1)	6696.7 (5920.0, 7490.5)	1208.8 (1068.6, 1352.0)	11.5 (8.5, 15.2)	2.8 (2.1, 3.8)	1033.5 (764.9, 1361.6)	255.8 (189.3, 337.0)	-84.6 (-89.0, -79.0)	0.3 (-1.9, 2.6)	-5.5 (-6.1, -5.0)
Jamaica	4.2 (3.2, 5.5)	7.4 (5.7, 9.8)	375.1 (285.1, 493.0)	668.2 (507.8, 878.2)	0.7 (0.4, 1.1)	2.1 (1.3, 3.3)	61.4 (37.9, 96.7)	187.4 (115.7, 295.2)	-83.6 (-89.8, -74.2)	-3.5 (-3.9, -3.1)	-4.1 (-4.6, -3.7)
Japan	285.5 (261.5, 312.0)	23.0 (21.1, 25.1)	25618.2 (23466.7, 27997.7)	2064.6 (1891.2, 2256.4)	55.6 (45.4, 67.9)	6.5 (5.3, 7.9)	4988.1 (4072.8, 6093.3)	579.4 (473.1, 707.8)	-80.5 (-84.3, -75.3)	-1.4 (-2.6, -0.2)	-5.3 (-5.8, -4.7)
Jordan	44.0 (21.3, 77.1)	34.6 (16.7, 60.6)	3947.3 (1907.6, 6914.3)	3103.8 (1500.0, 5436.7)	34.6 (19.5, 56.7)	16.4 (9.2, 26.8)	3108.1 (1746.8, 5084.2)	1470.4 (826.4, 2405.3)	-21.3 (-56.6, 85.5)	-2.7 (-3.0, -2.5)	-2.0 (-2.2, -1.9)
Kazakhstan	90.0 (28.7, 137.5)	24.5 (7.8, 37.4)	8074.9 (2577.5, 12333.2)	2197.1 (701.3, 3355.7)	48.0 (29.3, 76.7)	11.8 (7.2, 18.8)	4303.9 (2632.0, 6878.5)	1055.5 (645.5, 1686.8)	-46.7 (-74.7, 116.9)	-2.0 (-2.4, -1.5)	-3.1 (-3.6, -2.6)
Kenya	468.5 (243.3, 755.0)	50.3 (26.1, 81.0)	42051.3 (21834.5, 67776.0)	4512.1 (2342.8, 7272.4)	225.8 (126.1, 376.2)	19.5 (10.9, 32.5)	20263.2 (11319.5, 33753.2)	1749.4 (977.2, 2914.0)	-51.8 (-71.5, -23.2)	-1.9 (-2.3, -1.4)	-2.9 (-3.5, -2.3)
Kiribati	1.1 (0.3, 2.6)	42.5 (13.1, 102.5)	98.3 (30.3, 237.1)	3813.3 (1176.2, 9193.5)	0.5 (0.2, 0.9)	17.4 (6.9, 31.1)	44.7 (17.7, 79.8)	1563.8 (617.3, 2790.4)	-54.5 (-78.2, -2.5)	-2.4 (-2.6, -2.1)	-3.0 (-3.1, -2.9)
Kuwait	9.7 (6.9, 12.8)	27.3 (19.3, 35.8)	873.9 (619.3, 1147.7)	2449.2 (1735.7, 3216.6)	11.4 (8.4, 15.1)	22.9 (16.9, 30.3)	1023.2 (755.3, 1356.8)	2053.3 (1515.7, 2722.9)	17.1 (-25.5, 95.4)	-1.2 (-1.7, -0.7)	0.1 (-0.5, 0.7)
Kyrgyzstan	18.4 (11.6, 28.9)	14.3 (9.0, 22.4)	1653.7 (1044.1, 2587.5)	1283.3 (810.2, 2007.9)	6.6 (3.3, 12.8)	4.2 (2.1, 8.3)	590.4 (291.6, 1150.1)	380.7 (188.1, 741.6)	-64.3 (-84.4, -8.8)	-4.0 (-4.5, -3.5)	-5.0 (-5.7, -4.4)
Lao People's Democratic Republic	118.3 (42.0, 249.1)	75.1 (26.7, 158.2)	10617.5 (3773.8, 22362.9)	6742.9 (2396.6, 14202.0)	46.4 (17.6, 90.1)	27.2 (10.3, 52.8)	4168.7 (1581.7, 8083.4)	2445.2 (927.8, 4741.3)	-60.7 (-81.4, -15.1)	-2.7 (-3.1, -2.3)	-3.6 (-4.1, -3.0)
Latvia	20.3 (15.1, 26.7)	54.4 (40.4, 71.4)	1823.1 (1352.7, 2394.4)	4879.3 (3620.3, 6408.4)	3.3 (2.4, 4.5)	19.4 (14.0, 26.2)	297.1 (213.7, 401.1)	1741.7 (1252.5, 2350.9)	-83.7 (-89.4, -76.6)	-2.1 (-2.9, -1.4)	-4.2 (-5.1, -3.3)
Lebanon	22.6 (9.3, 43.4)	27.3 (11.2, 52.2)	2031.9 (836.2, 3889.8)	2448.5 (1007.6, 4687.3)	11.6 (5.6, 22.1)	14.6 (7.1, 27.9)	1037.5 (504.6, 1985.8)	1306.8 (635.6, 2501.2)	-48.9 (-81.2, 65.0)	-1.9 (-2.0, -1.8)	-2.0 (-2.1, -1.8)
Lesotho	21.1 (9.9, 39.1)	41.4 (19.3, 76.6)	1896.9 (887.1, 3513.0)	3711.9 (1735.9, 6874.3)	8.1 (2.0, 24.9)	19.9 (5.0, 61.4)	725.9 (181.1, 2233.0)	1789.5 (446.5, 5504.7)	-61.7 (-90.6, 7.7)	-2.6 (-2.8, -2.4)	-2.5 (-2.8, -2.1)
Liberia	107.4 (41.6, 228.6)	104.8 (40.6, 223.2)	9633.5 (3734.3, 20502.6)	9404.5 (3645.5, 20015.2)	48.2 (20.3, 97.6)	30.6 (12.9, 62.1)	4320.0 (1822.9, 8752.5)	2748.0 (1159.6, 5567.5)	-55.2 (-75.6, 7.7)	-2.9 (-3.4, -2.4)	-4.4 (-4.8, -4.1)
Libya	36.7 (14.6, 81.6)	28.7 (11.4, 63.7)	3291.1 (1306.0, 7317.3)	2571.8 (1020.5, 5718.1)	14.2 (6.4, 25.5)	17.9 (8.0, 32.3)	1272.4 (570.9, 2290.4)	1607.7 (721.3, 2894.0)	-61.3 (-79.7, -2.4)	-2.0 (-2.3, -1.7)	-1.2 (-1.5, -0.8)
Lithuania	6.6 (4.7, 9.2)	11.9 (8.4, 16.4)	595.8 (424.6, 825.3)	1063.5 (757.9, 1473.2)	2.0 (1.5, 2.8)	8.5 (6.2, 11.5)	182.9 (132.7, 247.7)	761.2 (552.1, 1030.8)	-69.3 (-80.3, -51.9)	-0.1 (-0.9, 0.7)	-1.9 (-3.0, -0.9)
Luxembourg	8.1 (7.3, 8.9)	164.4 (148.1, 182.3)	722.7 (651.1, 801.5)	14746.4 (13286.1, 16355.7)	1.1 (0.8, 1.4)	15.8 (11.8, 21.2)	94.5 (70.6, 126.5)	1422.4 (1061.7, 1903.9)	-86.9 (-90.4, -81.6)	-7.2 (-7.7, -6.7)	-7.3 (-8.0, -6.6)
Madagascar	284.7 (111.1, 654.7)	58.8 (22.9, 135.1)	25540.5 (9970.1, 58717.7)	5271.6 (2057.8, 12119.4)	302.9 (136.8, 535.0)	37.0 (16.7, 65.3)	27174.1 (12274.8, 47981.5)	3316.6 (1498.1, 5856.1)	6.4 (-41.5, 150.0)	-1.0 (-1.3, -0.7)	-1.3 (-1.7, -0.8)

Table S1 (continued)

Table S1 (continued)

Location	1990				2021				1990-2021		
	Deaths cases, n (95% UI)	Deaths rate, n (95% UI)	DALYs, n (95% UI)	DALY rate, n (95% UI)	Deaths cases, n (95% UI)	Deaths rate, n (95% UI)	DALYs, n (95% UI)	DALY rate, n (95% UI)	Cases change of Death or DALYs, % (95% CI)	EAPC of Deaths rate, % (95% CI)	EAPC of DALY rate, % (95% CI)
Malawi	306.2 (91.6, 799.3)	67.0 (20.0, 175.0)	27479.0 (8220.1, 71726.5)	6015.4 (1799.4, 15701.6)	108.7 (38.6, 252.3)	19.7 (7.0, 45.7)	9753.9 (3463.0, 22629.8)	1765.5 (626.8, 4096.2)	-64.5 (-80.1, -21.8)	-3.4 (-3.8, -3.1)	-4.3 (-4.7, -3.9)
Malaysia	50.9 (20.9, 100.0)	10.5 (4.3, 20.6)	4566.0 (1871.9, 8972.4)	942.9 (386.5, 1852.8)	29.4 (10.2, 58.6)	6.2 (2.2, 12.4)	2636.1 (918.5, 5256.5)	556.5 (193.9, 1109.7)	-42.3 (-73.1, 14.6)	-2.1 (-2.4, -1.9)	-1.6 (-1.9, -1.3)
Maldives	1.7 (0.7, 3.1)	19.6 (8.7, 35.7)	150.3 (66.6, 274.3)	1758.0 (778.7, 3209.3)	0.4 (0.2, 0.8)	7.5 (3.0, 13.8)	40.2 (16.2, 74.5)	669.6 (270.7, 1241.2)	-73.3 (-85.8, -46.1)	-3.5 (-3.7, -3.3)	-3.0 (-3.2, -2.7)
Mali	313.1 (118.9, 543.7)	76.6 (29.1, 133.0)	28088.2 (10669.3, 48790.9)	6872.9 (2610.7, 11938.6)	302.6 (104.0, 681.9)	30.2 (10.4, 68.1)	27149.2 (9329.3, 61158.5)	2711.6 (931.8, 6108.3)	-3.3 (-63.1, 101.5)	-2.5 (-2.8, -2.2)	-3.1 (-3.6, -2.7)
Malta	0.5 (0.4, 0.6)	8.2 (6.4, 10.5)	40.5 (31.8, 51.8)	733.0 (575.4, 938.5)	0.1 (0.0, 0.1)	1.5 (1.1, 2.0)	5.9 (4.1, 8.0)	135.6 (95.5, 183.8)	-85.5 (-90.9, -77.8)	-4.5 (-4.9, -4.1)	-5.2 (-5.6, -4.7)
Marshall Islands	0.4 (0.1, 0.7)	25.2 (9.9, 47.7)	33.0 (13.0, 62.5)	2259.5 (888.0, 4275.0)	0.1 (0.1, 0.2)	12.0 (5.5, 22.1)	12.2 (5.6, 22.4)	1078.4 (497.0, 1985.0)	-63.1 (-82.6, -28.1)	-1.9 (-2.2, -1.6)	-2.8 (-2.9, -2.6)
Mauritania	34.4 (14.2, 62.6)	42.0 (17.4, 76.4)	3089.5 (1277.6, 5618.8)	3767.1 (1557.7, 6851.1)	24.7 (11.0, 46.2)	18.7 (8.4, 34.9)	2219.6 (991.3, 4139.6)	1680.3 (750.4, 3133.8)	-28.2 (-64.7, 31.6)	-1.9 (-2.1, -1.6)	-2.1 (-2.6, -1.7)
Mauritius	2.2 (1.6, 3.0)	9.8 (7.2, 13.2)	197.6 (144.3, 264.7)	883.5 (645.4, 1183.9)	2.0 (1.3, 2.8)	15.5 (10.6, 22.0)	175.5 (120.0, 248.9)	1391.9 (951.6, 1973.4)	-11.2 (-39.8, 39.3)	0.0 (-1.0, 1.1)	1.6 (0.1, 3.2)
Mexico	350.6 (308.1, 405.5)	14.3 (12.6, 16.5)	31463.4 (27640.0, 36384.7)	1283.7 (1127.7, 1484.5)	368.0 (263.5, 513.3)	19.6 (14.0, 27.3)	33022.8 (23650.5, 46040.7)	1759.4 (1260.1, 2453.0)	5.0 (-26.7, 49.9)	0.4 (-0.2, 1.0)	2.2 (1.7, 2.6)
Micronesia (Federated States of)	1.0 (0.4, 1.9)	33.8 (13.6, 61.3)	93.4 (37.6, 169.5)	3030.1 (1219.2, 5502.3)	0.2 (0.1, 0.4)	11.2 (5.7, 20.2)	18.6 (9.4, 33.4)	1006.1 (511.6, 1810.5)	-80.1 (-91.0, -61.3)	-3.4 (-3.5, -3.3)	-3.7 (-3.8, -3.6)
Monaco	0.1 (0.0, 0.2)	43.9 (15.8, 80.0)	10.5 (3.8, 19.1)	3937.7 (1420.4, 7176.1)	0.1 (0.0, 0.1)	27.5 (7.6, 46.9)	7.8 (2.2, 13.3)	2467.9 (680.8, 4203.0)	-25.4 (-70.1, 64.6)	-3.7 (-4.1, -3.2)	-3.4 (-4.1, -2.6)
Mongolia	5.3 (1.4, 14.3)	7.6 (2.0, 20.5)	474.6 (122.1, 1279.7)	681.5 (175.3, 1837.6)	5.8 (2.1, 12.9)	7.6 (2.8, 17.1)	516.5 (191.1, 1161.5)	682.0 (252.4, 1533.8)	8.8 (-73.8, 501.2)	-0.0 (-0.2, 0.1)	0.3 (0.1, 0.5)
Montenegro	1.9 (0.8, 4.1)	19.4 (7.9, 42.0)	171.5 (70.3, 371.6)	1738.2 (712.2, 3766.0)	0.5 (0.1, 1.1)	6.7 (1.5, 15.8)	42.1 (9.4, 100.1)	598.2 (133.5, 1421.2)	-75.4 (-93.3, -24.3)	-3.2 (-3.4, -2.9)	-3.7 (-4.0, -3.3)
Morocco	1220.5 (619.8, 2450.2)	162.2 (82.3, 325.6)	109516.6 (55609.7, 219887.1)	14551.8 (7389.0, 29217.1)	197.9 (92.9, 346.4)	31.1 (14.6, 54.5)	17759.0 (8336.6, 31080.3)	2792.4 (1310.8, 4887.0)	-83.8 (-92.5, -66.3)	-4.7 (-4.9, -4.6)	-5.0 (-5.2, -4.9)
Mozambique	663.8 (251.8, 1240.8)	119.5 (45.3, 223.3)	59554.4 (22596.4, 111330.3)	10720.2 (4067.5, 20040.2)	382.0 (142.9, 827.9)	36.0 (13.5, 78.1)	34269.2 (12825.4, 74230.3)	3232.9 (1209.9, 7002.9)	-42.4 (-75.5, 7.6)	-3.1 (-3.3, -2.9)	-3.5 (-3.7, -3.3)
Myanmar	645.3 (248.7, 1214.9)	61.3 (23.6, 115.4)	57940.1 (22337.6, 109050.9)	5502.7 (2121.4, 10356.8)	289.5 (116.0, 532.5)	27.7 (11.1, 50.9)	25986.6 (10411.1, 47789.7)	2484.6 (995.4, 4569.2)	-55.1 (-78.2, -7.8)	-1.8 (-2.1, -1.6)	-2.3 (-2.6, -1.9)
Namibia	10.8 (4.3, 20.9)	22.2 (8.8, 42.9)	971.9 (385.5, 1878.8)	1990.9 (789.7, 3849.0)	9.0 (2.9, 19.6)	16.1 (5.2, 35.0)	810.1 (259.5, 1761.3)	1443.4 (462.4, 3138.4)	-16.6 (-61.3, 52.5)	-1.1 (-1.3, -1.0)	-0.7 (-0.8, -0.7)
Nauru	0.1 (0.0, 0.1)	20.3 (6.7, 42.6)	6.3 (2.1, 13.2)	1824.6 (602.5, 3824.2)	0.0 (0.0, 0.1)	14.0 (5.7, 26.6)	3.6 (1.5, 6.8)	1257.4 (515.2, 2386.9)	-42.8 (-74.2, 13.3)	-0.8 (-1.1, -0.6)	-1.5 (-1.8, -1.2)
Nepal	792.6 (297.6, 1814.6)	108.3 (40.7, 247.9)	71128.8 (26708.8, 162848.9)	9716.5 (3648.5, 22245.9)	151.7 (74.9, 282.0)	24.2 (11.9, 45.0)	13613.9 (6721.2, 25309.4)	2169.9 (1071.3, 4034.0)	-80.9 (-91.8, -55.2)	-4.0 (-4.5, -3.5)	-5.2 (-5.8, -4.7)
Netherlands	120.1 (107.3, 133.9)	62.0 (55.4, 69.1)	10776.2 (9629.5, 12010.6)	5563.7 (4971.6, 6201.0)	13.2 (9.9, 17.0)	7.5 (5.6, 9.7)	1181.7 (890.6, 1526.5)	670.9 (505.6, 866.6)	-89.0 (-91.7, -85.2)	-6.8 (-7.3, -6.3)	-6.1 (-6.7, -5.4)
New Zealand	137.1 (125.7, 148.5)	231.6 (212.4, 250.9)	12295.7 (11274.5, 13316.7)	20779.9 (19054.1, 22505.4)	22.0 (17.0, 27.4)	36.1 (28.0, 45.0)	1973.5 (1529.3, 2459.7)	3241.2 (2511.6, 4039.7)	-84.0 (-87.8, -79.7)	-5.9 (-6.1, -5.6)	-6.2 (-6.5, -5.9)
Nicaragua	24.2 (12.0, 43.0)	17.8 (8.8, 31.6)	2175.7 (1080.5, 3862.1)	1595.6 (792.4, 2832.4)	9.5 (2.8, 18.4)	7.5 (2.2, 14.6)	855.2 (248.1, 1653.5)	674.9 (195.8, 1305.0)	-60.7 (-84.6, -16.5)	-2.8 (-3.0, -2.6)	-2.7 (-3.1, -2.4)
Niger	468.3 (203.2, 906.9)	115.2 (50.0, 223.0)	42018.1 (18231.7, 81380.4)	10332.9 (4483.5, 20012.7)	567.9 (231.9, 1107.9)	50.8 (20.7, 99.0)	50951.1 (20800.7, 99424.5)	4553.7 (1859.0, 8885.9)	21.3 (-35.6, 164.6)	-2.3 (-2.5, -2.0)	-3.0 (-3.3, -2.8)
Nigeria	2845.4 (1349.3, 5050.9)	75.4 (35.8, 133.9)	255315.3 (121066.4, 453292.3)	6769.4 (3209.9, 12018.5)	4786.3 (2075.2, 8117.0)	61.0 (26.4, 103.4)	429317.5 (186071.9, 728042.6)	5468.9 (2370.3, 9274.3)	68.2 (16.8, 169.7)	-0.3 (-0.4, -0.2)	-0.1 (-0.3, 0.1)
Niue	0.0 (0.0, 0.0)	21.0 (8.1, 39.0)	0.9 (0.3, 1.6)	1882.1 (730.4, 3503.1)	0.0 (0.0, 0.0)	46.8 (25.3, 74.8)	0.9 (0.5, 1.5)	4197.3 (2268.7, 6712.3)	8.8 (-41.2, 92.6)	-0.2 (-0.8, 0.5)	-0.5 (-1.6, 0.6)
North Macedonia	10.3 (2.6, 25.5)	31.0 (7.7, 76.5)	927.8 (229.1, 2286.0)	2782.8 (687.1, 6856.4)	1.4 (0.6, 2.9)	7.6 (3.0, 15.1)	129.0 (51.0, 257.7)	680.1 (268.8, 1359.1)	-86.1 (-96.0, -41.5)	-4.1 (-4.3, -4.0)	-3.9 (-4.2, -3.7)
Northern Mariana Islands	0.1 (0.0, 0.2)	9.9 (3.7, 19.0)	10.2 (3.8, 19.6)	890.4 (328.3, 1707.9)	0.0 (0.0, 0.1)	5.2 (2.5, 9.6)	2.8 (1.3, 5.1)	468.7 (227.5, 861.5)	-72.8 (-86.3, -53.1)	-1.7 (-1.8, -1.6)	-2.1 (-2.2, -1.9)
Norway	71.1 (65.2, 77.1)	121.6 (111.6, 132.0)	6376.8 (5848.9, 6918.8)	10914.0 (10010.6, 11841.8)	5.4 (4.5, 6.4)	9.7 (8.2, 11.6)	482.6 (405.0, 575.4)	875.0 (734.4, 1043.4)	-92.4 (-93.9, -90.8)	-7.3 (-7.7, -7.0)	-7.3 (-7.7, -7.0)
Oman	26.7 (14.1, 44.7)	38.2 (20.2, 64.0)	2396.1 (1265.6, 4011.7)	3430.1 (1811.7, 5742.9)	13.7 (7.2, 22.0)	17.2 (9.0, 27.5)	1230.0 (645.8, 1970.5)	1539.2 (808.1, 2465.8)	-48.7 (-71.0, 9.4)	-3.2 (-3.8, -2.7)	-1.7 (-2.3, -1.2)
Pakistan	6286.5 (2180.6, 12894.7)	159.2 (55.2, 326.6)	564154.3 (195671.3, 1157154.1)	14287.9 (4955.6, 29306.4)	2210.3 (996.3, 4145.7)	36.9 (16.6, 69.3)	198314.8 (89410.5, 371961.6)	3313.2 (1493.8, 6214.4)	-64.8 (-87.1, 16.8)	-3.6 (-3.9, -3.4)	-4.1 (-4.4, -3.8)
Palau	0.1 (0.0, 0.2)	22.6 (7.1, 54.7)	6.1 (1.9, 14.8)	2029.5 (636.8, 4909.2)	0.0 (0.0, 0.0)	12.5 (6.0, 22.1)	2.0 (1.0, 3.6)	1120.5 (538.3, 1984.1)	-67.1 (-85.3, -11.4)	-1.8 (-1.9, -1.7)	-2.0 (-2.0, -1.9)
Palestine	23.9 (8.3, 50.4)	28.4 (9.9, 59.9)	2149.0 (745.3, 4523.8)	2550.8 (884.7, 5369.7)	22.4 (11.7, 37.6)	18.8 (9.8, 31.5)	2013.4 (1047.5, 3371.6)	1688.7 (878.5, 2827.9)	-6.3 (-58.9, 200.7)	-1.0 (-1.1, -0.9)	-1.2 (-1.4, -1.0)
Panama	1.5 (1.2, 2.0)	2.6 (2.1, 3.4)	136.7 (107.0, 176.1)	237.2 (185.6, 305.6)	4.9 (3.4, 6.7)	7.0 (4.9, 9.6)	441.3 (308.4, 604.3)	630.7 (440.8, 863.7)	222.9 (116.8, 396.2)	3.1 (2.7, 3.5)	4.1 (3.7, 4.4)
Papua New Guinea	91.4 (31.5, 176.7)	65.5 (22.6, 126.5)	8203.1 (2827.1, 15854.2)	5873.4 (2024.2, 11351.7)	125.6 (58.7, 219.4)	38.3 (17.9, 66.9)	11270.5 (5264.0, 19672.3)	3439.1 (1606.3, 6002.8)	37.4 (-34.3, 177.7)	-1.3 (-1.6, -1.1)	-2.0 (-2.3, -1.7)
Paraguay	9.7 (1.9, 22.4)	7.7 (1.5, 17.9)	873.0 (167.5, 2014.2)	694.7 (133.3, 1603.0)	5.6 (1.5, 11.0)	4.4 (1.2, 8.6)	499.5 (134.2, 986.9)	392.3 (105.4, 775.0)	-42.8 (-76.3, 101.7)	-2.1 (-2.3, -1.8)	-2.1 (-2.6, -1.7)

Table S1 (continued)

Table S1 (continued)

Location	1990				2021				1990-2021		
	Deaths cases, n (95% UI)	Deaths rate, n (95% UI)	DALYs, n (95% UI)	DALY rate, n (95% UI)	Deaths cases, n (95% UI)	Deaths rate, n (95% UI)	DALYs, n (95% UI)	DALY rate, n (95% UI)	Cases change of Death or DALYs, % (95% CI)	EAPC of Deaths rate, % (95% CI)	EAPC of DALY rate, % (95% CI)
Peru	153.9 (66.5, 304.8)	25.0 (10.8, 49.4)	13816.2 (5970.3, 27351.5)	2241.0 (968.4, 4436.5)	32.8 (15.4, 61.0)	4.9 (2.3, 9.2)	2945.3 (1386.9, 5469.6)	442.8 (208.5, 822.2)	-78.7 (-90.6, -55.3)	-5.2 (-5.4, -5.0)	-5.4 (-5.7, -5.0)
Philippines	654.9 (222.7, 1164.6)	33.6 (11.4, 59.7)	58779.8 (19974.7, 104544.3)	3011.4 (1023.4, 5356.1)	283.5 (123.0, 473.6)	12.7 (5.5, 21.2)	25450.8 (11039.5, 42513.3)	1139.2 (494.2, 1903.0)	-56.7 (-76.2, -20.9)	-3.1 (-3.2, -2.9)	-3.3 (-3.6, -3.0)
Poland	138.2 (113.3, 167.3)	25.4 (20.8, 30.8)	12399.5 (10166.2, 15004.0)	2280.0 (1869.4, 2758.9)	14.5 (9.6, 21.4)	4.2 (2.8, 6.2)	1304.2 (860.7, 1916.9)	377.7 (249.3, 555.2)	-89.5 (-93.2, -84.4)	-3.9 (-4.7, -3.2)	-5.9 (-6.6, -5.2)
Portugal	12.4 (9.9, 15.3)	10.9 (8.7, 13.4)	1114.7 (887.1, 1373.7)	975.3 (776.1, 1201.9)	0.9 (0.7, 1.3)	1.1 (0.8, 1.5)	83.4 (59.6, 113.9)	101.5 (72.6, 138.7)	-92.5 (-95.0, -88.9)	-6.9 (-7.5, -6.3)	-7.9 (-8.7, -7.0)
Puerto Rico	5.6 (4.3, 7.3)	8.7 (6.6, 11.2)	504.9 (381.9, 651.6)	779.6 (589.7, 1006.0)	0.0 (0.0, 0.0)	0.0 (0.0, 0.0)	0.0 (0.0, 0.1)	0.2 (0.2, 0.3)	-100.0 (-100.0, -100.0)	-12.2 (-16.1, -8.1)	-19.2 (-24.5, -13.5)
Qatar	2.6 (1.0, 4.8)	23.6 (9.4, 43.4)	236.2 (93.6, 434.0)	2121.3 (840.9, 3898.0)	3.3 (1.5, 6.4)	8.6 (3.9, 16.7)	297.5 (133.9, 575.9)	772.9 (347.9, 1496.0)	26.0 (-49.5, 339.4)	-3.1 (-3.2, -3.1)	-3.0 (-3.1, -3.0)
Republic of Korea	74.7 (6.0, 186.7)	11.4 (0.9, 28.6)	6700.0 (537.6, 16753.9)	1026.4 (82.4, 2566.7)	16.2 (2.2, 36.2)	6.1 (0.8, 13.5)	1457.4 (199.9, 3252.4)	543.2 (74.5, 1212.3)	-78.2 (-91.9, -33.3)	-2.3 (-2.5, -2.0)	-1.6 (-1.9, -1.4)
Republic of Moldova	3.1 (2.0, 4.4)	3.8 (2.6, 5.5)	275.6 (183.0, 392.5)	344.7 (228.9, 491.0)	3.6 (2.4, 5.4)	12.8 (8.3, 19.1)	327.3 (212.5, 488.7)	1149.4 (746.4, 1716.2)	18.7 (-32.3, 107.2)	3.6 (2.6, 4.5)	2.2 (0.7, 3.7)
Romania	11.4 (8.8, 15.2)	3.7 (2.8, 4.9)	1025.3 (784.6, 1363.5)	327.9 (251.0, 436.1)	2.8 (1.7, 4.2)	1.5 (1.0, 2.3)	248.4 (156.5, 376.9)	138.4 (87.2, 210.1)	-75.8 (-85.9, -56.7)	-1.0 (-1.6, -0.4)	-2.6 (-2.9, -2.2)
Russian Federation	574.3 (504.2, 656.9)	28.1 (24.7, 32.2)	51514.2 (45219.6, 58931.6)	2525.1 (2216.6, 2888.7)	196.5 (165.2, 236.9)	14.3 (12.0, 17.3)	17633.0 (14828.0, 21255.7)	1285.8 (1081.3, 1550.0)	-65.8 (-72.6, -55.3)	-2.1 (-2.5, -1.7)	-2.8 (-3.3, -2.2)
Rwanda	267.5 (118.1, 480.0)	90.4 (39.9, 162.2)	23997.4 (10595.2, 43070.6)	8111.6 (3581.4, 14558.8)	65.7 (24.6, 138.6)	18.3 (6.9, 38.7)	5896.6 (2211.7, 12435.1)	1645.7 (617.3, 3470.5)	-75.4 (-91.5, -45.8)	-4.4 (-5.2, -3.5)	-6.6 (-7.5, -5.7)
Saint Kitts and Nevis	0.2 (0.1, 0.2)	17.2 (12.5, 22.9)	14.1 (10.3, 18.9)	1540.3 (1121.1, 2059.5)	0.0 (0.0, 0.0)	4.8 (3.1, 7.5)	2.5 (1.6, 3.9)	432.8 (276.3, 677.5)	-82.3 (-89.9, -71.0)	-3.4 (-3.8, -3.0)	-3.7 (-4.3, -3.0)
Saint Lucia	1.3 (1.0, 1.7)	36.7 (27.9, 47.2)	115.6 (87.9, 148.6)	3293.0 (2502.3, 4231.6)	0.2 (0.1, 0.3)	12.8 (8.2, 19.6)	19.3 (12.3, 29.5)	1152.2 (732.4, 1757.8)	-83.3 (-90.6, -71.9)	-3.2 (-3.5, -2.8)	-3.2 (-3.7, -2.6)
Saint Vincent and the Grenadines	0.5 (0.3, 0.6)	18.2 (13.0, 24.4)	40.9 (29.2, 55.0)	1628.8 (1163.4, 2190.5)	0.0 (0.0, 0.0)	2.2 (1.4, 3.3)	2.6 (1.7, 3.9)	198.7 (126.7, 299.1)	-93.7 (-96.4, -89.4)	-5.1 (-5.8, -4.4)	-6.8 (-7.6, -5.9)
Samoa	1.5 (0.6, 2.8)	28.9 (11.5, 51.9)	137.6 (54.7, 247.4)	2590.8 (1028.9, 4657.8)	0.8 (0.3, 1.7)	12.8 (5.3, 27.5)	69.6 (28.7, 149.9)	1145.9 (472.7, 2469.4)	-49.5 (-79.5, 15.4)	-2.7 (-2.8, -2.6)	-2.5 (-2.6, -2.4)
San Marino	0.1 (0.0, 0.2)	40.0 (14.1, 70.0)	8.6 (3.0, 15.0)	3589.9 (1266.4, 6278.8)	0.0 (0.0, 0.0)	9.5 (3.7, 16.9)	2.0 (0.8, 3.5)	851.4 (328.0, 1513.6)	-77.2 (-92.3, -36.5)	-3.8 (-4.0, -3.6)	-4.2 (-4.4, -3.9)
Sao Tome and Principe	2.3 (1.1, 4.6)	53.2 (24.1, 105.3)	209.0 (94.6, 413.1)	4776.5 (2161.6, 9441.0)	0.7 (0.3, 1.3)	14.6 (6.6, 26.4)	63.9 (28.9, 115.5)	1312.2 (593.4, 2371.6)	-69.4 (-84.9, -38.3)	-3.4 (-3.8, -3.0)	-4.4 (-4.9, -3.8)
Saudi Arabia	199.5 (87.4, 372.8)	40.4 (17.7, 75.5)	17896.4 (7848.6, 33453.1)	3623.6 (1589.2, 6773.5)	45.0 (16.8, 85.3)	9.7 (3.6, 18.4)	4036.2 (1510.6, 7657.8)	869.9 (325.6, 1650.4)	-77.5 (-93.4, -27.2)	-4.5 (-4.7, -4.4)	-4.2 (-4.3, -4.1)
Senegal	181.1 (76.3, 325.7)	55.5 (23.4, 99.8)	16250.4 (6844.1, 29214.0)	4977.7 (2096.4, 8948.6)	106.8 (40.7, 231.4)	22.8 (8.7, 49.5)	9582.0 (3652.1, 20764.9)	2050.4 (781.5, 4443.4)	-41.0 (-77.1, 30.0)	-2.2 (-2.4, -1.9)	-2.3 (-2.6, -1.9)
Serbia	28.2 (11.3, 51.0)	20.8 (8.3, 37.5)	2531.7 (1013.7, 4573.8)	1862.7 (745.9, 3365.2)	4.8 (1.3, 9.7)	7.2 (2.0, 14.5)	433.6 (117.8, 872.7)	645.2 (175.3, 1298.5)	-82.9 (-94.7, -54.4)	-3.8 (-4.2, -3.5)	-3.9 (-4.5, -3.3)
Seychelles	0.1 (0.0, 0.2)	7.9 (3.0, 14.1)	11.5 (4.4, 20.6)	709.5 (269.3, 1268.2)	0.1 (0.1, 0.2)	7.6 (3.3, 14.4)	10.7 (4.6, 20.2)	680.4 (293.4, 1289.1)	-7.4 (-48.0, 80.8)	-0.7 (-0.9, -0.5)	-0.0 (-0.2, 0.1)
Sierra Leone	183.2 (67.2, 400.9)	99.4 (36.5, 217.5)	16437.8 (6030.7, 35951.9)	8916.7 (3271.3, 19502.2)	78.6 (20.1, 219.7)	27.5 (7.0, 76.8)	7053.5 (1804.9, 19703.3)	2463.7 (630.4, 6882.3)	-57.1 (-86.1, -18.2)	-3.1 (-3.6, -2.6)	-4.3 (-5.0, -3.7)
Singapore	0.6 (0.2, 1.1)	1.2 (0.4, 2.2)	53.4 (18.3, 96.2)	108.6 (37.2, 195.5)	0.1 (0.1, 0.2)	0.2 (0.1, 0.3)	9.8 (6.1, 15.0)	17.8 (11.1, 27.2)	-81.6 (-92.0, -30.5)	-5.1 (-5.4, -4.8)	-5.0 (-5.5, -4.5)
Slovakia	11.2 (4.7, 19.8)	14.3 (5.9, 25.1)	1007.5 (419.0, 1772.2)	1278.5 (531.7, 2248.7)	6.1 (2.4, 11.5)	10.9 (4.2, 20.4)	548.1 (213.7, 1028.8)	977.7 (381.1, 1835.2)	-45.6 (-75.4, 15.7)	-1.3 (-1.5, -1.1)	-1.1 (-1.4, -0.8)
Slovenia	4.0 (2.9, 5.3)	17.6 (13.0, 23.4)	355.9 (262.1, 473.6)	1580.3 (1163.5, 2103.0)	0.7 (0.5, 1.1)	3.9 (2.6, 5.9)	65.4 (43.0, 99.7)	349.0 (229.6, 531.7)	-81.6 (-89.3, -68.7)	-4.1 (-4.3, -3.8)	-4.7 (-5.0, -4.4)
Solomon Islands	4.2 (1.5, 8.1)	32.3 (11.4, 62.3)	378.6 (133.8, 730.4)	2895.4 (1023.6, 5586.4)	2.8 (1.3, 5.3)	14.3 (6.6, 26.8)	255.6 (118.6, 479.8)	1282.8 (595.1, 2408.1)	-32.5 (-67.8, 38.2)	-2.4 (-2.6, -2.2)	-3.0 (-3.1, -2.8)
Somalia	325.2 (153.6, 599.6)	92.1 (43.5, 169.8)	29183.7 (13779.7, 53794.9)	8263.7 (3901.9, 15232.7)	510.9 (251.5, 891.4)	56.5 (27.8, 98.7)	45848.4 (22568.1, 79989.8)	5074.0 (2497.6, 8852.4)	57.1 (-24.7, 213.5)	-1.2 (-1.4, -1.0)	-1.7 (-1.9, -1.5)
South Africa	249.4 (81.6, 610.9)	24.9 (8.1, 61.0)	22382.7 (7323.2, 54806.3)	2234.3 (731.0, 5471.0)	157.6 (54.4, 409.0)	16.3 (5.6, 42.3)	14144.2 (4880.9, 36697.5)	1462.1 (504.6, 3793.6)	-36.8 (-58.0, -2.3)	-1.3 (-1.4, -1.2)	-1.2 (-1.4, -1.0)
South Sudan	298.2 (123.4, 543.3)	127.7 (52.9, 232.7)	26753.8 (11077.0, 48747.9)	11458.4 (4744.2, 20878.4)	384.3 (178.5, 708.4)	108.0 (50.2, 199.1)	34482.0 (16012.7, 63557.5)	9689.9 (4499.8, 17860.5)	28.9 (-34.7, 191.8)	-0.8 (-1.0, -0.6)	-0.8 (-1.1, -0.5)
Spain	130.6 (112.1, 151.4)	32.9 (28.2, 38.2)	11720.4 (10054.7, 13589.0)	2953.3 (2533.6, 3424.1)	24.1 (17.4, 33.2)	7.1 (5.2, 9.8)	2160.1 (1563.3, 2980.6)	639.0 (462.5, 881.8)	-81.6 (-87.3, -73.1)	-3.5 (-4.1, -2.8)	-5.1 (-5.4, -4.8)
Sri Lanka	26.0 (11.1, 46.5)	7.4 (3.1, 13.2)	2336.2 (994.9, 4174.8)	663.4 (282.5, 1185.5)	16.3 (5.2, 31.5)	5.4 (1.7, 10.5)	1465.0 (471.3, 2827.2)	486.6 (156.5, 939.0)	-37.3 (-68.8, 25.2)	-1.2 (-1.4, -1.0)	-0.8 (-1.0, -0.5)
Sudan	1205.8 (584.8, 2416.5)	148.9 (72.2, 298.5)	108194.0 (52492.5, 216855.5)	13363.5 (6483.6, 26784.7)	678.4 (326.6, 1425.5)	60.3 (29.0, 126.6)	60860.9 (29290.5, 127906.7)	5405.7 (2601.6, 11360.8)	-43.7 (-67.8, 22.4)	-2.2 (-2.5, -1.9)	-2.8 (-3.2, -2.5)
Suriname	0.9 (0.3, 1.9)	10.0 (3.7, 21.1)	80.4 (29.7, 168.9)	901.8 (332.9, 1894.7)	0.4 (0.2, 0.8)	4.7 (2.2, 8.8)	36.6 (17.1, 69.3)	418.1 (195.6, 791.0)	-54.5 (-77.9, -6.7)	-2.7 (-2.8, -2.6)	-2.9 (-3.1, -2.7)
Sweden	107.2 (98.5, 116.4)	88.4 (81.3, 96.0)	9616.2 (8838.6, 10441.6)	7933.6 (7292.1, 8614.6)	10.4 (8.5, 13.0)	9.2 (7.5, 11.5)	936.2 (765.1, 1167.7)	827.9 (676.6, 1032.6)	-90.3 (-92.2, -87.7)	-5.9 (-6.4, -5.5)	-6.2 (-6.8, -5.7)
Switzerland	20.8 (16.9, 25.3)	25.3 (20.6, 30.8)	1866.1 (1516.1, 2271.4)	2272.2 (1846.0, 2765.7)	2.7 (1.8, 3.9)	3.1 (2.1, 4.5)	239.5 (164.4, 351.8)	274.8 (188.6, 403.7)	-87.2 (-91.8, -79.9)	-4.9 (-5.8, -4.1)	-7.5 (-7.9, -7.1)

Table S1 (continued)

Table S1 (continued)

Location	1990				2021				1990-2021		
	Deaths cases, n (95% UI)	Deaths rate, n (95% UI)	DALYs, n (95% UI)	DALY rate, n (95% UI)	Deaths cases, n (95% UI)	Deaths rate, n (95% UI)	DALYs, n (95% UI)	DALY rate, n (95% UI)	Cases change of Death or DALYs, % (95% CI)	EAPC of Deaths rate, % (95% CI)	EAPC of DALY rate, % (95% CI)
Syrian Arab Republic	404.2 (208.8, 724.0)	91.0 (47.0, 163.1)	36261.0 (18731.9, 64958.9)	8167.5 (4219.2, 14631.5)	29.5 (10.1, 56.9)	15.1 (5.2, 29.2)	2648.1 (903.3, 5105.2)	1357.8 (463.2, 2617.8)	-92.7 (-96.8, -83.4)	-5.7 (-6.1, -5.3)	-5.3 (-6.0, -4.7)
Taiwan (Province of China)	115.0 (98.2, 133.3)	35.7 (30.5, 41.4)	10314.8 (8805.6, 11961.6)	3204.8 (2735.9, 3716.4)	18.9 (13.4, 25.9)	11.9 (8.4, 16.3)	1699.8 (1198.7, 2328.0)	1069.0 (753.9, 1464.1)	-83.5 (-88.8, -75.8)	0.5 (-1.8, 2.8)	-4.6 (-5.3, -3.9)
Tajikistan	16.6 (5.8, 38.5)	8.3 (2.9, 19.2)	1487.0 (520.6, 3452.5)	741.8 (259.7, 1722.3)	32.0 (12.4, 77.0)	11.5 (4.5, 27.8)	2868.0 (1113.8, 6909.0)	1035.5 (402.1, 2494.5)	92.8 (-24.3, 543.9)	1.2 (1.0, 1.4)	1.0 (0.7, 1.3)
Thailand	152.3 (66.8, 262.4)	14.9 (6.5, 25.7)	13675.7 (6002.0, 23560.3)	1338.0 (587.2, 2305.0)	39.0 (17.4, 69.1)	7.3 (3.3, 12.9)	3504.5 (1565.9, 6203.8)	652.9 (291.7, 1155.8)	-74.4 (-87.1, -53.5)	-2.9 (-3.2, -2.7)	-2.2 (-2.4, -2.1)
Timor-Leste	21.0 (8.3, 52.1)	64.1 (25.2, 159.0)	1886.5 (741.4, 4681.2)	5753.9 (2261.2, 14277.7)	10.9 (4.6, 18.9)	27.7 (11.7, 48.3)	977.5 (411.7, 1700.9)	2490.4 (1048.9, 4333.3)	-48.2 (-77.5, 12.7)	-2.6 (-2.9, -2.3)	-3.4 (-3.7, -3.1)
Togo	63.9 (24.1, 122.1)	42.5 (16.0, 81.1)	5731.9 (2158.0, 10951.4)	3809.7 (1434.3, 7278.9)	45.5 (18.3, 88.5)	19.3 (7.8, 37.5)	4085.5 (1642.7, 7935.4)	1731.2 (696.1, 3362.5)	-28.7 (-63.2, 27.2)	-2.1 (-2.3, -1.8)	-2.5 (-2.8, -2.2)
Tokelau	0.0 (0.0, 0.0)	23.0 (9.7, 42.0)	0.8 (0.3, 1.4)	2066.7 (872.2, 3773.6)	0.0 (0.0, 0.0)	87.8 (38.6, 160.4)	1.4 (0.6, 2.5)	7874.8 (3465.2, 14391.5)	79.2 (-19.5, 258.9)	-1.2 (-2.3, -0.1)	-0.7 (-2.6, 1.2)
Tonga	0.6 (0.2, 1.1)	19.2 (7.1, 34.4)	55.1 (20.4, 98.8)	1722.6 (637.6, 3090.0)	0.3 (0.1, 0.6)	9.4 (4.2, 18.9)	24.9 (11.0, 49.9)	845.2 (375.0, 1693.1)	-54.8 (-79.8, -12.2)	-2.1 (-2.3, -1.9)	-2.7 (-2.9, -2.5)
Trinidad and Tobago	7.0 (5.2, 9.4)	29.3 (21.8, 38.9)	632.2 (469.5, 839.4)	2630.2 (1953.3, 3492.4)	1.1 (0.8, 1.6)	7.4 (5.1, 10.7)	99.0 (67.6, 142.1)	666.5 (454.6, 956.4)	-84.3 (-90.4, -75.1)	-3.3 (-4.2, -2.4)	-5.4 (-6.4, -4.3)
Tunisia	126.7 (53.0, 253.2)	59.5 (24.9, 119.0)	11366.7 (4758.2, 22718.0)	5340.0 (2235.4, 10672.9)	28.1 (14.8, 48.2)	16.8 (8.9, 28.8)	2519.3 (1330.3, 4326.2)	1505.0 (794.7, 2584.4)	-77.8 (-90.1, -39.1)	-4.3 (-4.5, -4.0)	-3.7 (-4.1, -3.4)
Turkey	1120.5 (399.9, 2230.7)	78.7 (28.1, 156.7)	100534.7 (35883.6, 200057.3)	7063.1 (2521.0, 14055.1)	179.3 (96.9, 291.0)	17.7 (9.6, 28.7)	16088.3 (8696.7, 26114.0)	1587.5 (858.2, 2576.9)	-27.5 (-62.3, 179.3)	-5.4 (-5.6, -5.1)	-5.0 (-5.3, -4.7)
Turkmenistan	14.6 (3.8, 22.7)	12.1 (3.1, 18.8)	1309.2 (336.6, 2034.2)	1084.1 (278.7, 1684.5)	10.6 (5.9, 17.5)	9.8 (5.4, 16.2)	949.4 (527.8, 1572.8)	876.5 (487.3, 1452.1)	-73.3 (-90.7, -1.2)	-0.7 (-0.8, -0.6)	-0.6 (-0.8, -0.4)
Tuvalu	0.1 (0.0, 0.3)	35.4 (7.1, 98.2)	10.7 (2.1, 29.5)	3177.1 (638.0, 8808.4)	0.0 (0.0, 0.1)	12.2 (5.7, 22.9)	2.8 (1.3, 5.3)	1093.3 (507.9, 2052.5)	-84.0 (-92.1, -55.6)	-3.3 (-3.4, -3.2)	-3.5 (-3.6, -3.3)
Uganda	525.0 (214.0, 974.7)	61.8 (25.2, 114.6)	47111.9 (19207.9, 87443.2)	5541.6 (2259.4, 10285.7)	360.4 (143.6, 741.0)	23.6 (9.4, 48.6)	32334.5 (12881.8, 66459.6)	2121.6 (845.2, 4360.7)	-31.4 (-67.9, 38.0)	-2.6 (-3.1, -2.2)	-3.7 (-4.2, -3.3)
Ukraine	235.5 (156.1, 347.8)	34.8 (23.0, 51.3)	21128.3 (14000.5, 31202.2)	3119.2 (2066.9, 4606.5)	55.0 (36.1, 95.5)	19.7 (13.0, 34.3)	4931.6 (3240.5, 8574.1)	1769.9 (1163.0, 3077.2)	-76.7 (-86.7, -51.3)	-1.8 (-1.9, -1.7)	-2.0 (-2.1, -1.8)
United Arab Emirates	11.0 (5.7, 19.4)	23.3 (12.0, 41.0)	989.9 (510.7, 1745.1)	2087.5 (1077.0, 3679.9)	7.2 (3.5, 12.9)	9.4 (4.6, 17.0)	645.4 (316.0, 1160.2)	846.8 (414.5, 1522.2)	-34.8 (-69.8, 56.6)	-2.2 (-2.4, -2.0)	-2.1 (-2.5, -1.8)
United Kingdom	1027.4 (985.6, 1076.8)	131.1 (125.8, 137.4)	92184.9 (88429.3, 96620.0)	11765.2 (11285.9, 12331.2)	87.3 (71.8, 102.0)	12.6 (10.4, 14.7)	7838.7 (6439.7, 9155.4)	1132.9 (930.7, 1323.2)	-91.5 (-93.0, -90.1)	-6.4 (-6.8, -6.0)	-6.7 (-7.1, -6.3)
United Republic of Tanzania	788.9 (242.3, 1879.8)	71.2 (21.9, 169.6)	70784.5 (21741.3, 168673.4)	6388.0 (1962.1, 15222.0)	662.4 (255.5, 1311.5)	36.3 (14.0, 71.9)	59426.9 (22922.3, 117703.2)	3257.7 (1256.6, 6452.3)	-16.0 (-63.2, 139.4)	-1.3 (-1.7, -0.9)	-2.3 (-2.8, -1.8)
United States of America	5195.1 (4974.8, 5404.4)	126.9 (121.5, 132.0)	466176.9 (446414.1, 484957.3)	11386.0 (10903.3, 11844.7)	1173.7 (995.9, 1354.4)	32.1 (27.3, 37.1)	105314.8 (89369.4, 121542.3)	2882.4 (2445.9, 3326.5)	-77.4 (-80.9, -73.8)	-4.0 (-4.2, -3.8)	-4.0 (-4.3, -3.7)
United States Virgin Islands	0.1 (0.1, 0.2)	5.6 (2.6, 10.1)	11.5 (5.3, 20.8)	501.6 (230.4, 910.0)	0.0 (0.0, 0.0)	2.5 (0.7, 5.4)	1.7 (0.5, 3.6)	227.5 (62.3, 487.9)	-85.5 (-95.3, -66.3)	-2.5 (-2.6, -2.5)	-2.4 (-2.5, -2.3)
Uruguay	18.2 (14.7, 22.4)	33.1 (26.7, 40.8)	1634.0 (1317.2, 2013.1)	2974.3 (2397.7, 3664.4)	6.0 (4.2, 8.3)	17.0 (11.9, 23.5)	539.9 (377.2, 747.9)	1524.5 (1064.8, 2111.5)	-67.0 (-78.0, -51.2)	-0.7 (-1.7, 0.4)	-3.0 (-4.3, -1.8)
Uzbekistan	69.8 (22.3, 106.8)	10.1 (3.2, 15.5)	6262.7 (1996.8, 9583.3)	908.1 (289.5, 1389.5)	65.0 (35.7, 103.8)	8.3 (4.6, 13.2)	5827.8 (3208.0, 9314.1)	743.6 (409.3, 1188.4)	-7.0 (-51.7, 179.9)	-0.7 (-0.8, -0.6)	-0.6 (-0.8, -0.5)
Vanuatu	1.5 (0.6, 2.8)	25.0 (9.9, 47.6)	132.4 (52.3, 251.7)	2247.6 (888.6, 4274.6)	1.1 (0.5, 2.1)	13.0 (6.2, 24.6)	99.9 (47.6, 189.5)	1166.1 (555.3, 2211.5)	-24.5 (-64.7, 49.4)	-1.9 (-2.0, -1.7)	-2.2 (-2.4, -1.9)
Venezuela (Bolivarian Republic of)	14.5 (11.6, 17.8)	2.7 (2.2, 3.3)	1301.0 (1043.8, 1595.5)	243.7 (195.5, 298.8)	19.6 (12.9, 30.3)	4.4 (2.9, 6.8)	1757.6 (1157.5, 2713.1)	394.2 (259.6, 608.4)	35.1 (-13.8, 114.7)	1.6 (1.3, 2.0)	1.5 (0.9, 2.0)
Viet Nam	556.6 (212.8, 979.8)	29.5 (11.3, 52.0)	49972.1 (19105.0, 87996.0)	2652.7 (1014.2, 4671.2)	176.6 (65.3, 351.3)	11.4 (4.2, 22.7)	15859.6 (5866.8, 31540.8)	1022.7 (378.3, 2033.8)	-68.3 (-83.8, -35.1)	-3.3 (-3.5, -3.1)	-3.2 (-3.5, -2.9)
Yemen	985.3 (484.4, 1715.6)	162.5 (79.9, 282.9)	88411.5 (43464.7, 153972.0)	14578.3 (7166.9, 25388.6)	753.8 (338.9, 1519.3)	79.7 (35.8, 160.6)	67627.4 (30389.9, 136349.2)	7148.9 (3212.5, 14413.6)	-23.5 (-64.3, 81.7)	-2.0 (-2.2, -1.8)	-2.5 (-2.7, -2.2)
Zambia	223.7 (74.4, 512.4)	63.0 (21.0, 144.4)	20069.5 (6675.0, 45967.8)	5654.4 (1880.6, 12951.1)	126.3 (45.0, 277.4)	21.5 (7.6, 47.1)	11334.2 (4038.6, 24878.8)	1925.9 (686.2, 4227.5)	-43.5 (-76.0, 50.1)	-2.5 (-3.1, -1.9)	-4.1 (-4.7, -3.4)
Zimbabwe	94.4 (38.7, 203.0)	25.4 (10.4, 54.6)	8472.1 (3472.2, 18203.7)	2277.8 (933.5, 4894.2)	99.3 (36.0, 238.7)	22.0 (8.0, 52.9)	8913.3 (3231.5, 21420.2)	1973.4 (715.4, 4742.4)	5.2 (-49.1, 89.6)	-0.4 (-0.7, -0.1)	-0.5 (-1.0, -0.0)

DALYs, disability-adjusted life-years; SIDS, sudden infant death syndrome; UI: uncertain interval; EAPC, estimated annual percentage change; CI: confidence interval; SDI, socio-demographic index. Rate, per 100000 people.

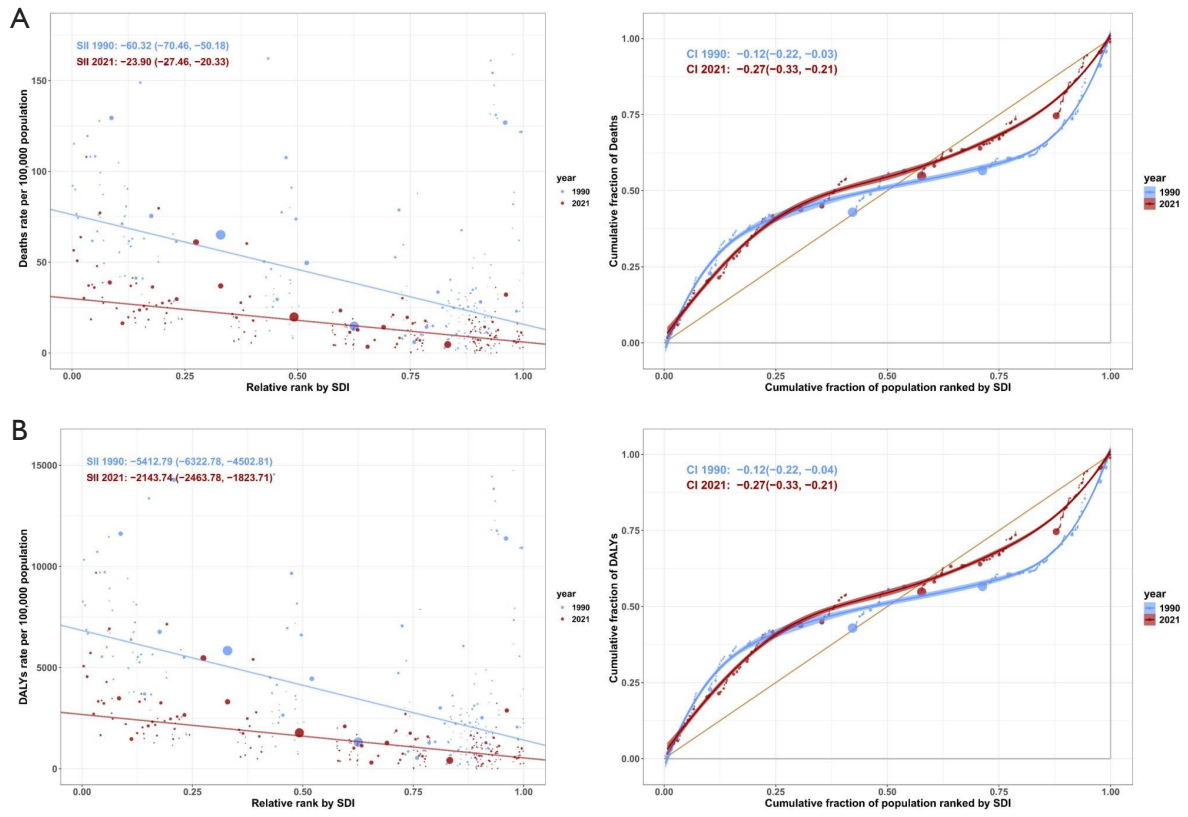


Figure S3 Cross-country inequality analysis exploring the relationship between SDI and disease burden for SIDS. (A) Cross-country inequality analysis in deaths rate. (B) Cross-country inequality analysis in DALYs rate. SDI, sociodemographic index; SIDS, sudden infant death syndrome; DALYs, disability-adjusted life years.

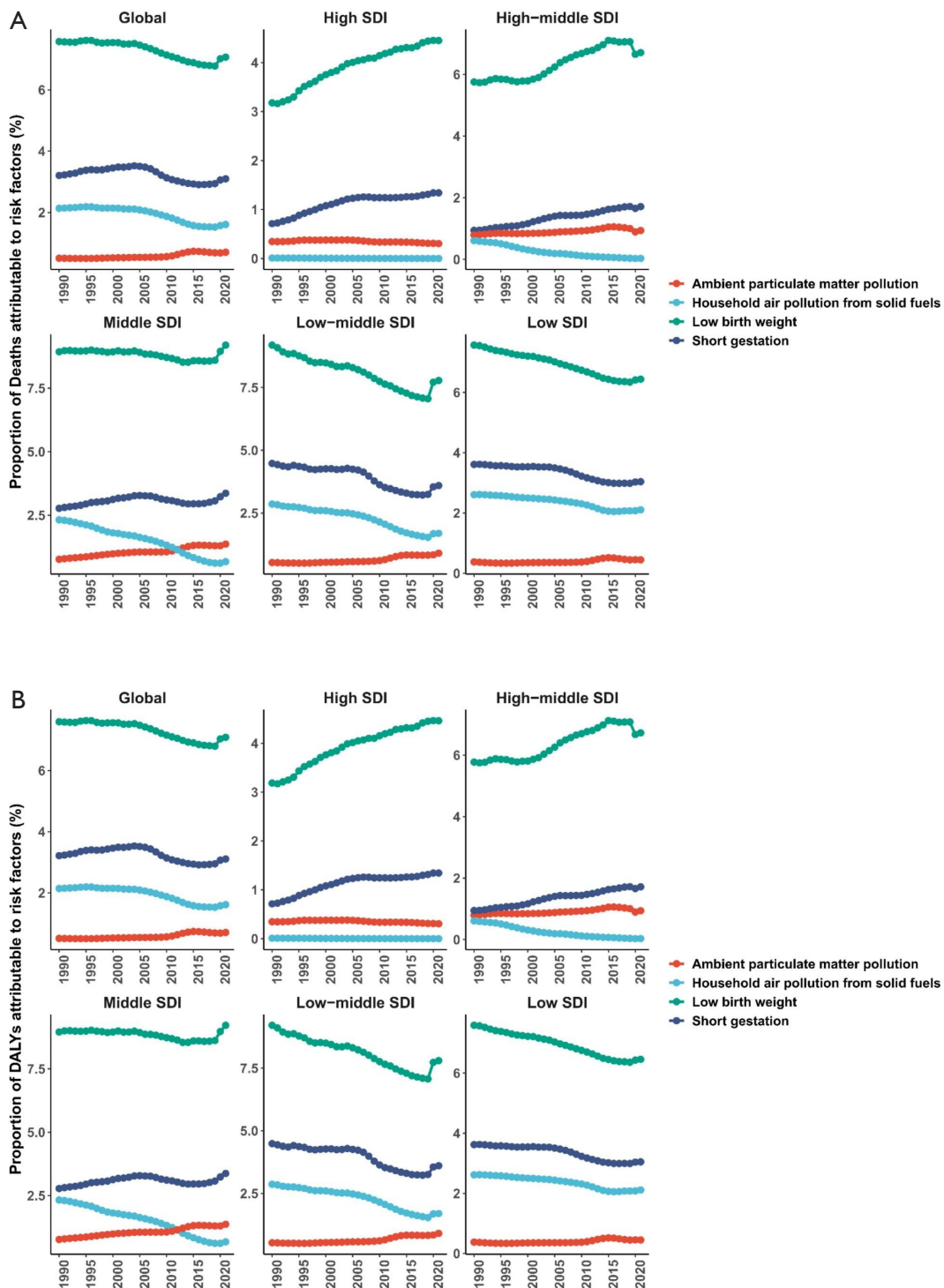


Figure S4 The changing trend of the proportion of risk factors attributed to the deaths and DALYs rates of SIDS, 1990-2021. (A) Deaths; (B) DALYs. DALYs, disability-adjusted life years; SIDS, sudden infant death syndrome; SDI, sociodemographic index.