

Figure S1 Percentage changes in under-5 mortality rates for infectious diseases, by sex and SDI regions, 1990–2021. For each disease, a shift to the left in the bar chart represents a decrease in mortality rates, and a shift to the right indicates an increase in mortality rates. SDI, socio-demographic index.

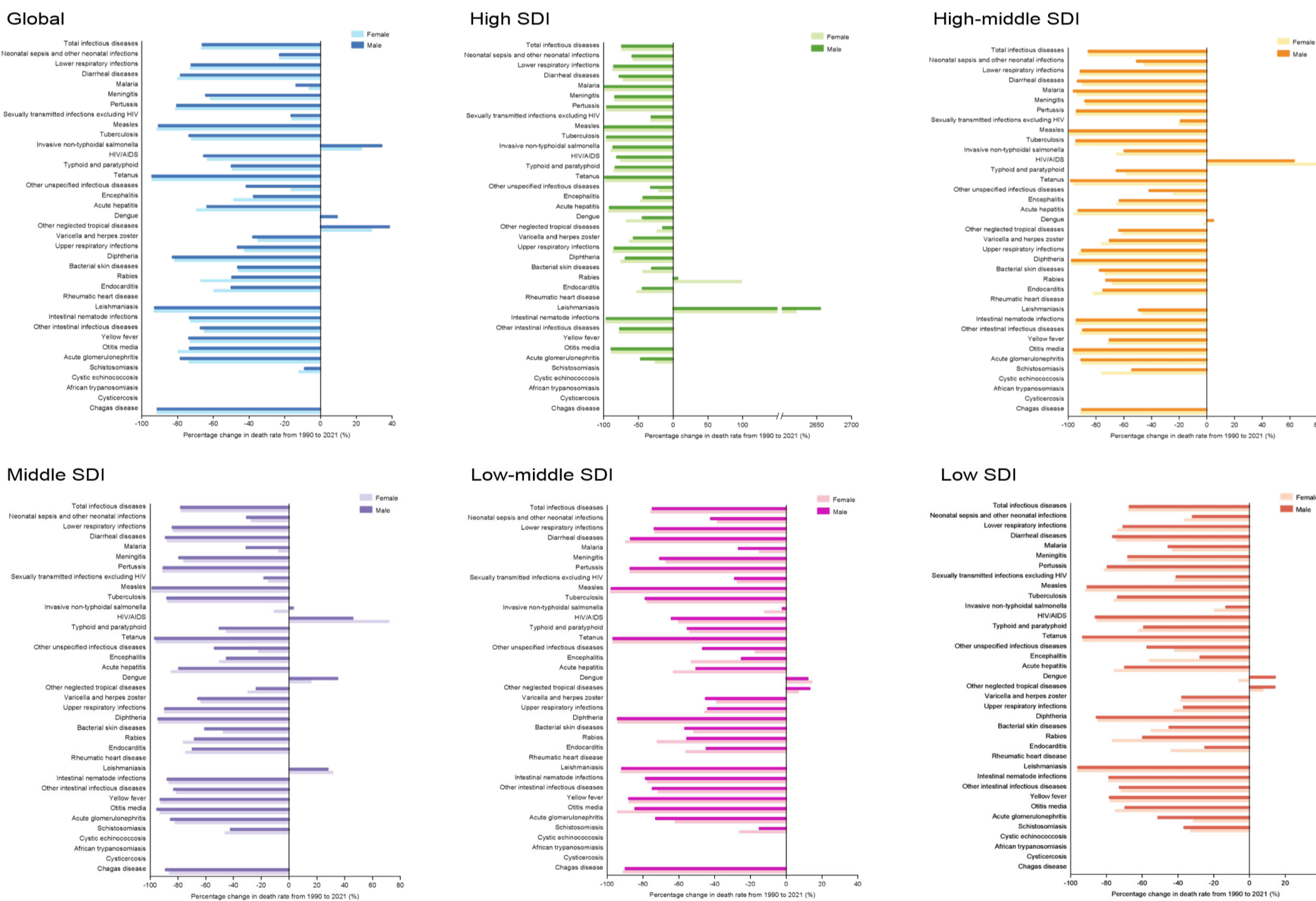


Figure S2 Percentage change in mortality rates for infectious diseases among infants, by sex and SDI regions, 1990–2021. For each disease, a shift to the left in the bar chart represents a decrease in mortality rates, and a shift to the right indicates an increase in mortality rates. SDI, socio-demographic index.

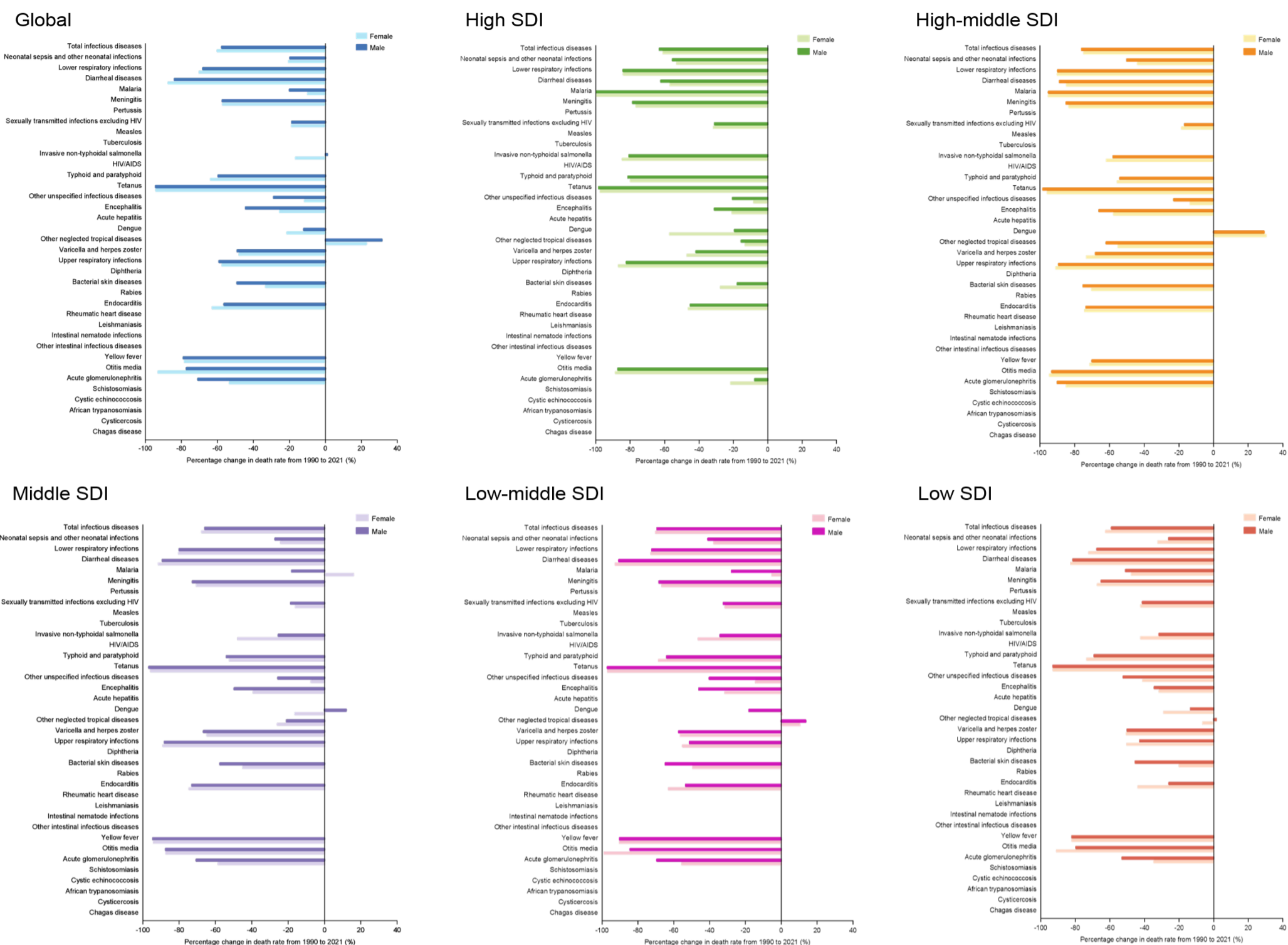


Figure S3 Percentage change in mortality rates for infectious diseases among neonates, by sex and SDI regions, 1990–2021. For each disease, a shift to the left in the bar chart represents a decrease in mortality rates, and a shift to the right indicates an increase in mortality rates. SDI, socio-demographic index.

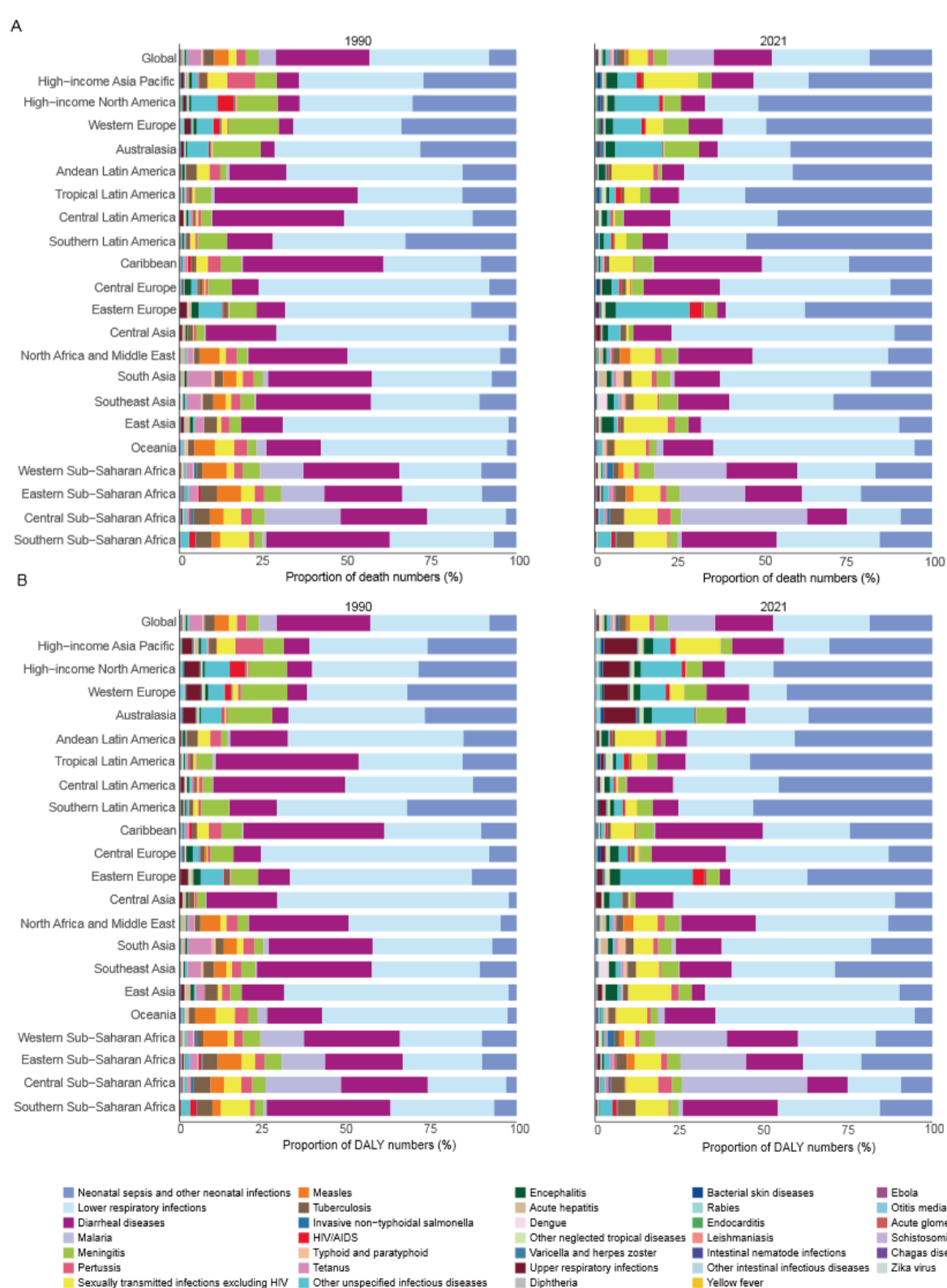


Figure S4 Proportions of death and DALYs numbers accounted for by each infectious disease among infants, by regions, in 1990 and 2021. Each colored area represents the proportion of deaths (A) or DALYs (B) from a specific infectious disease relative to the total number of deaths or DALYs caused by infections among infants in that year. DALY, disability-adjusted life-years.

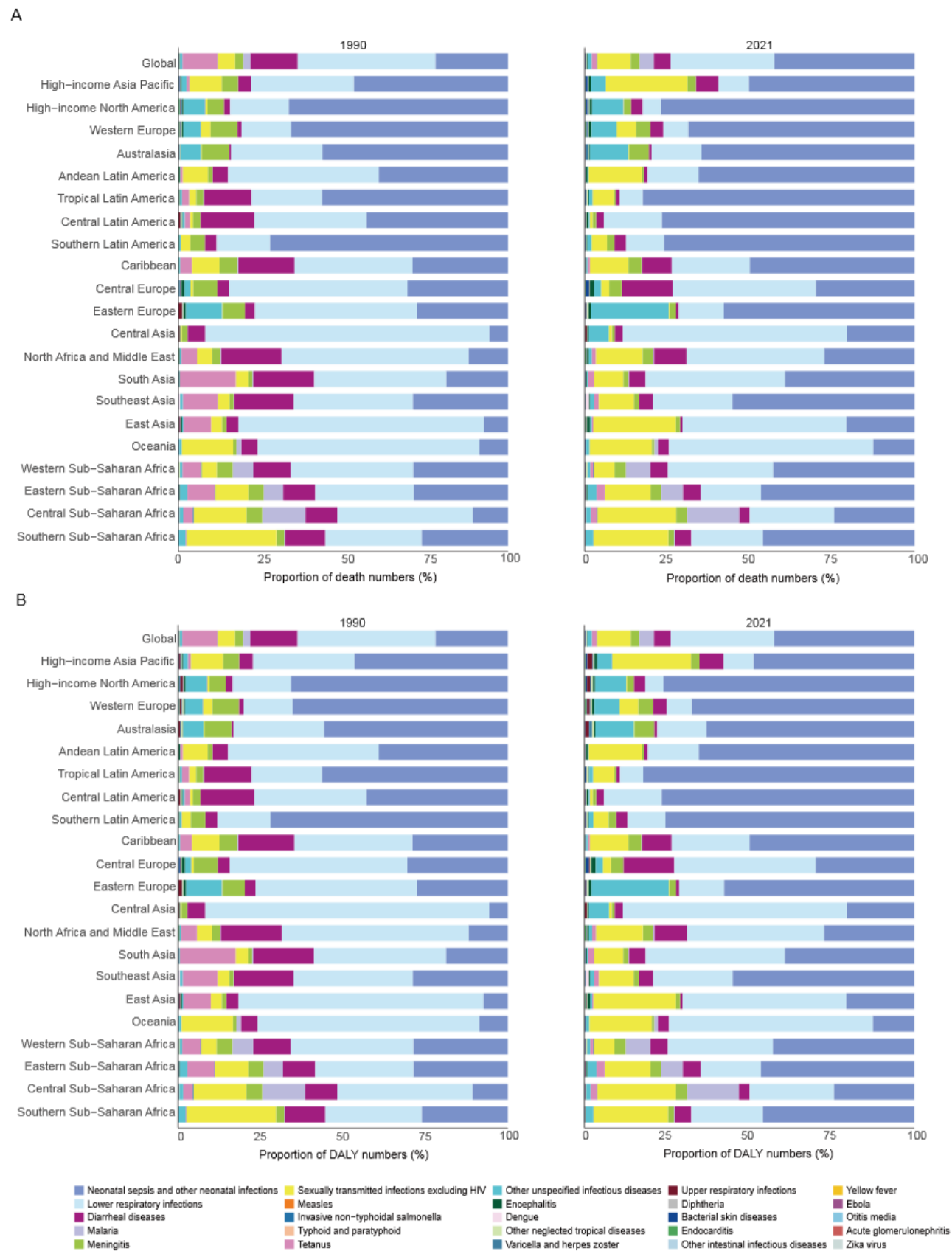


Figure S5 Proportions of death and DALYs numbers accounted for by each infectious disease among neonates, by regions, in 1990 and 2021. Each colored area represents the proportion of deaths (A) or DALYs (B) from a specific infectious disease relative to the total number of deaths or DALYs caused by infections among neonates in that year. DALY, disability-adjusted life-years.

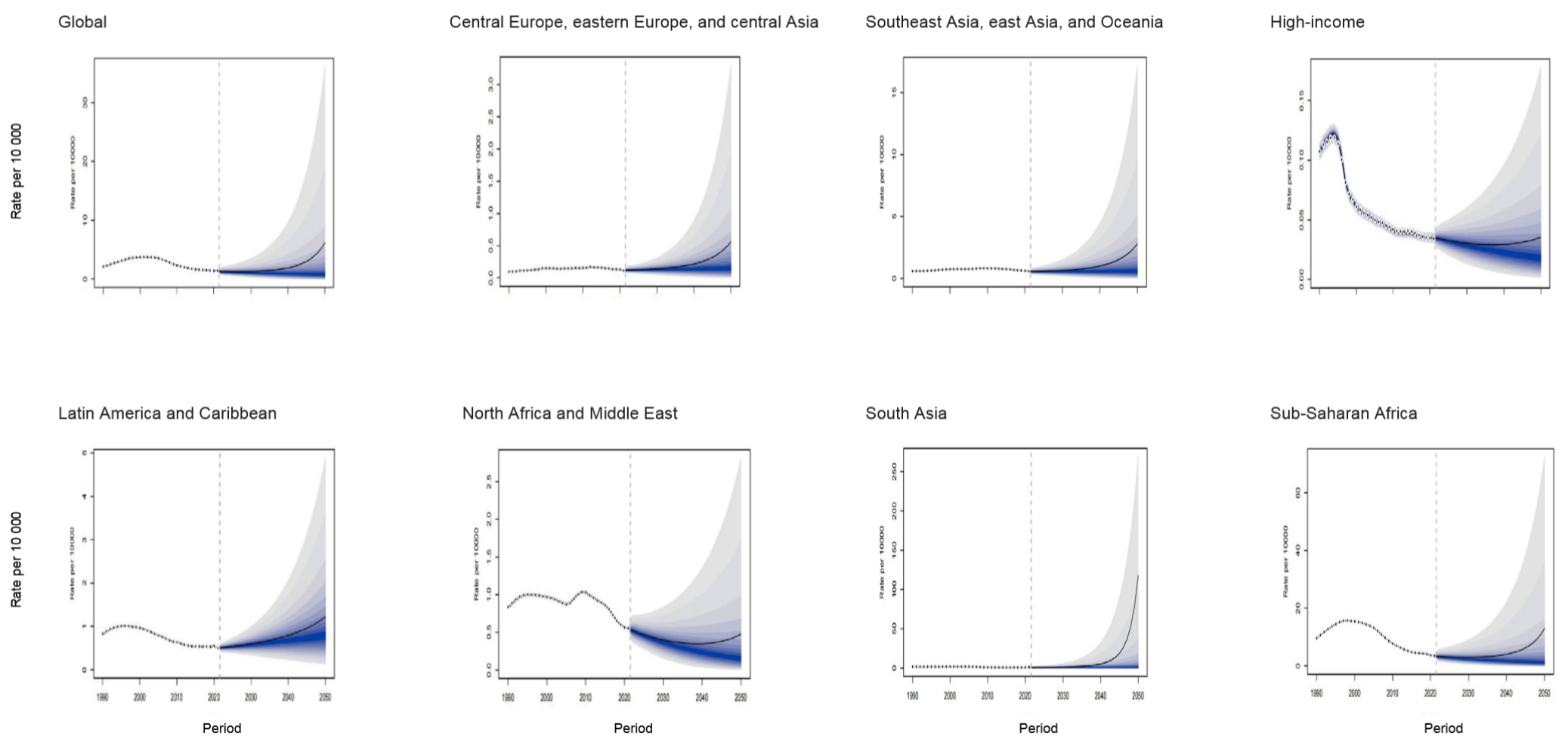


Figure S6 Forecasts of specific death rates attributable to HIV/AIDS and sexually transmitted infections among children under-5 years of age, by super-regions, 2022–2050. Fan charts illustrate the spread of forecast distributions across the 5th to 95th percentiles, with shaded regions depicting the prediction intervals. The solid lines within these charts represent the predicted mean values, while the vertical dashed line marks the starting point of the forecast period.

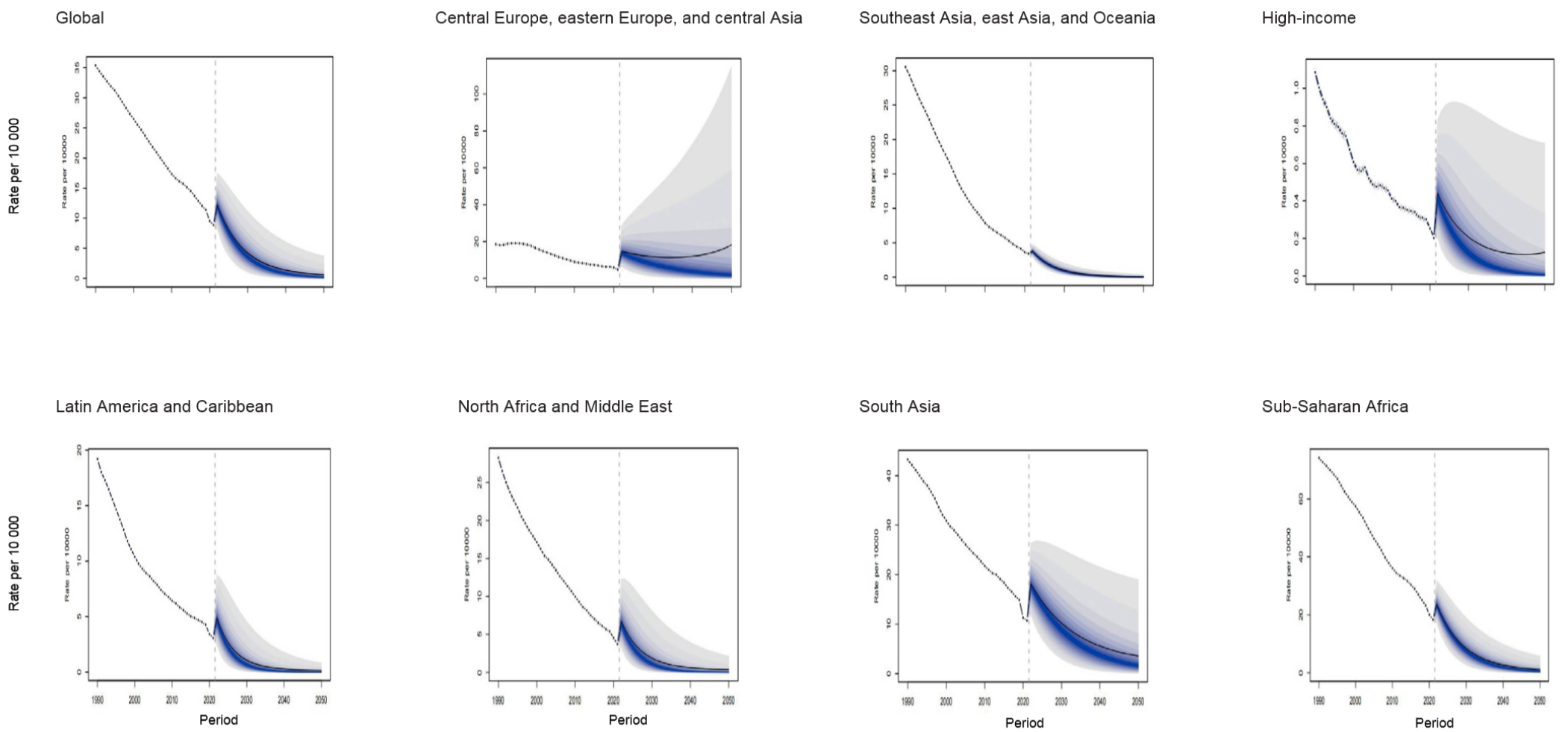


Figure S7 Forecasts of specific death rates attributable to respiratory infections and tuberculosis among children under-5 years of age, by super-regions, 2022–2050. Fan charts illustrate the spread of forecast distributions across the 5th to 95th percentiles, with shaded regions depicting the prediction intervals. The solid lines within these charts represent the predicted mean values, while the vertical dashed line marks the starting point of the forecast period.

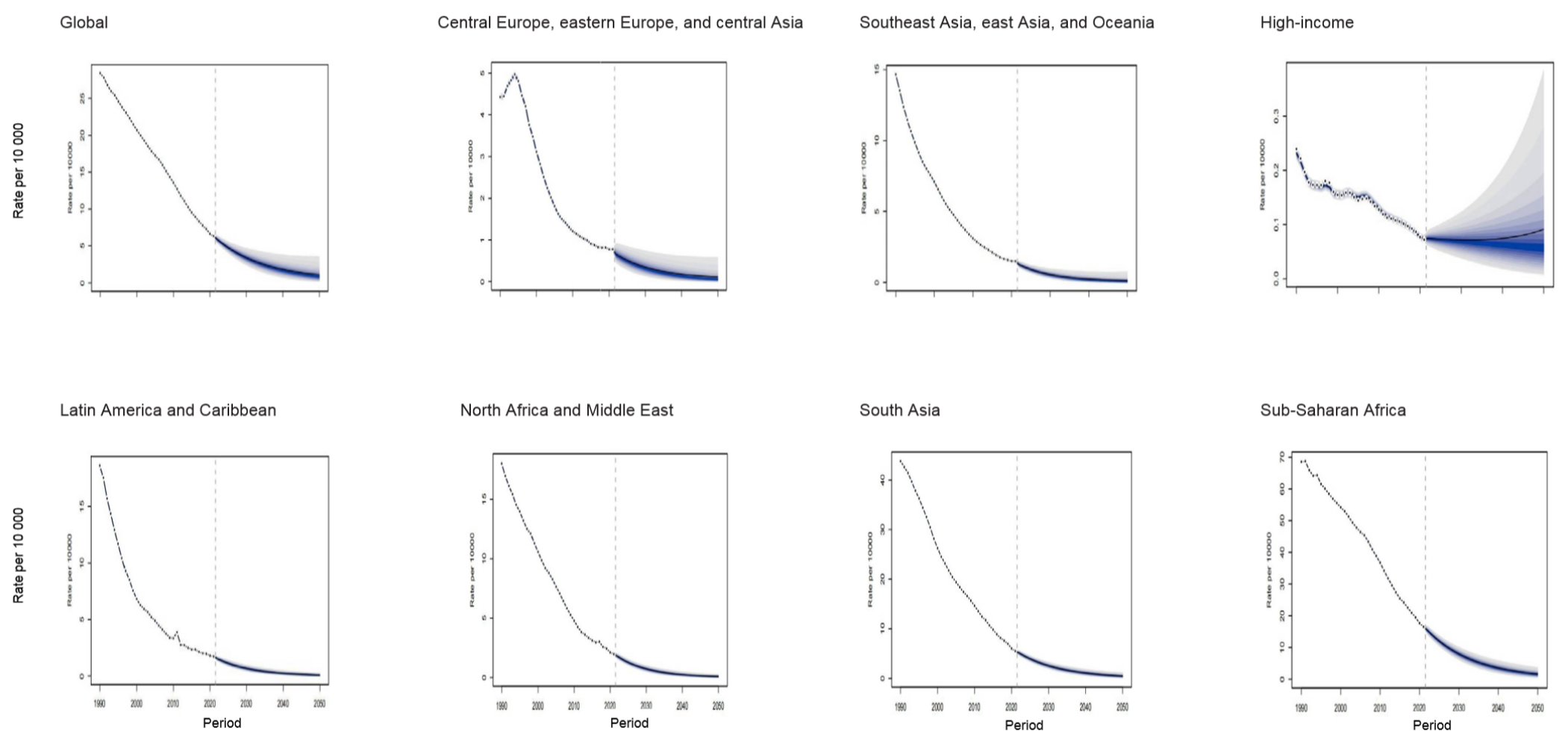


Figure S8 Forecasts of specific death rates attributable to enteric infections among children under-5 years of age, by super-regions, 2022–2050. Fan charts illustrate the spread of forecast distributions across the 5th to 95th percentiles, with shaded regions depicting the prediction intervals. The solid lines within these charts represent the predicted mean values, while the vertical dashed line marks the starting point of the forecast period.

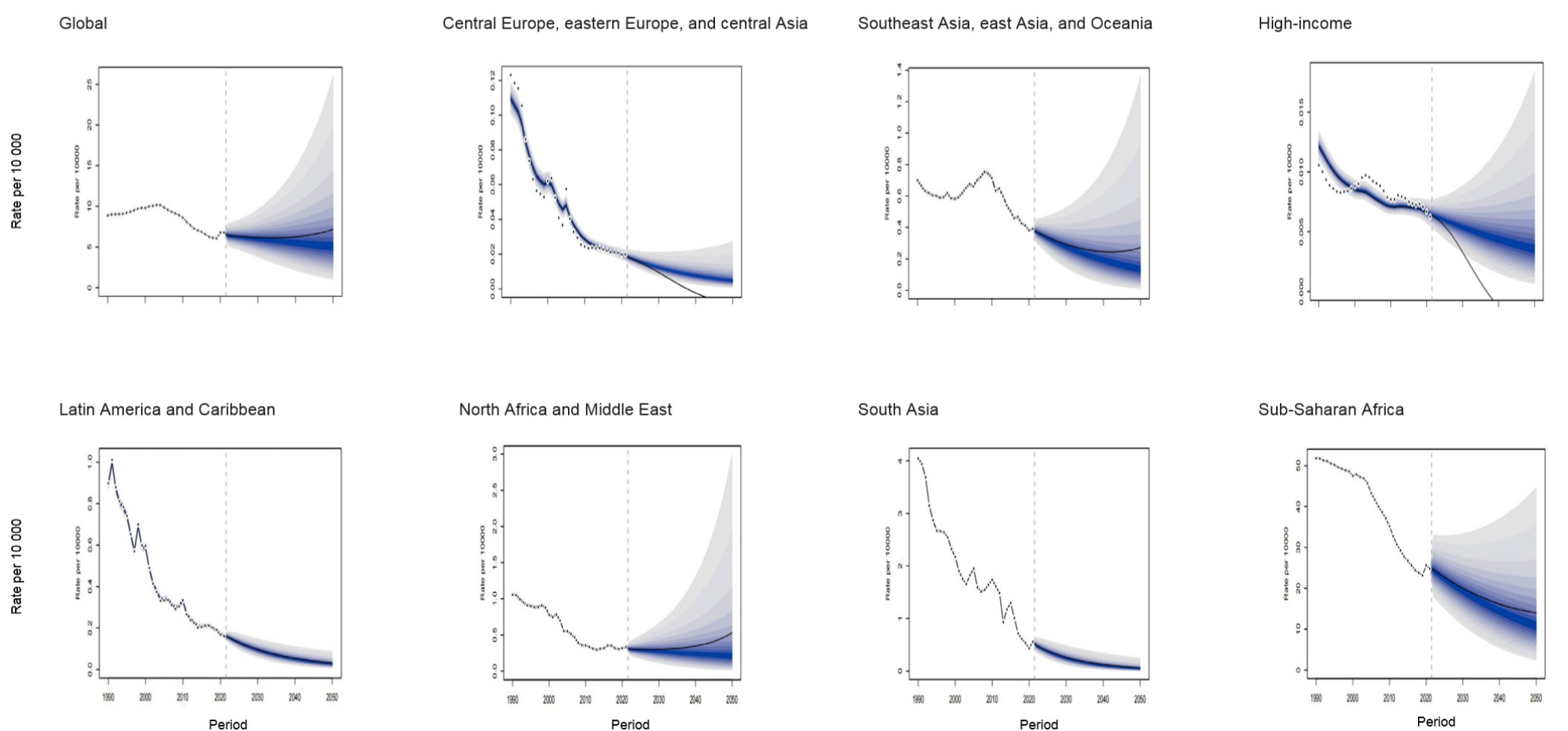


Figure S9 Forecasts of specific death rates attributable to neglected tropical diseases and malaria among children under-5 years of age, by super-regions, 2022–2050. Fan charts illustrate the spread of forecast distributions across the 5th to 95th percentiles, with shaded regions depicting the prediction intervals. The solid lines within these charts represent the predicted mean values, while the vertical dashed line marks the starting point of the forecast period.

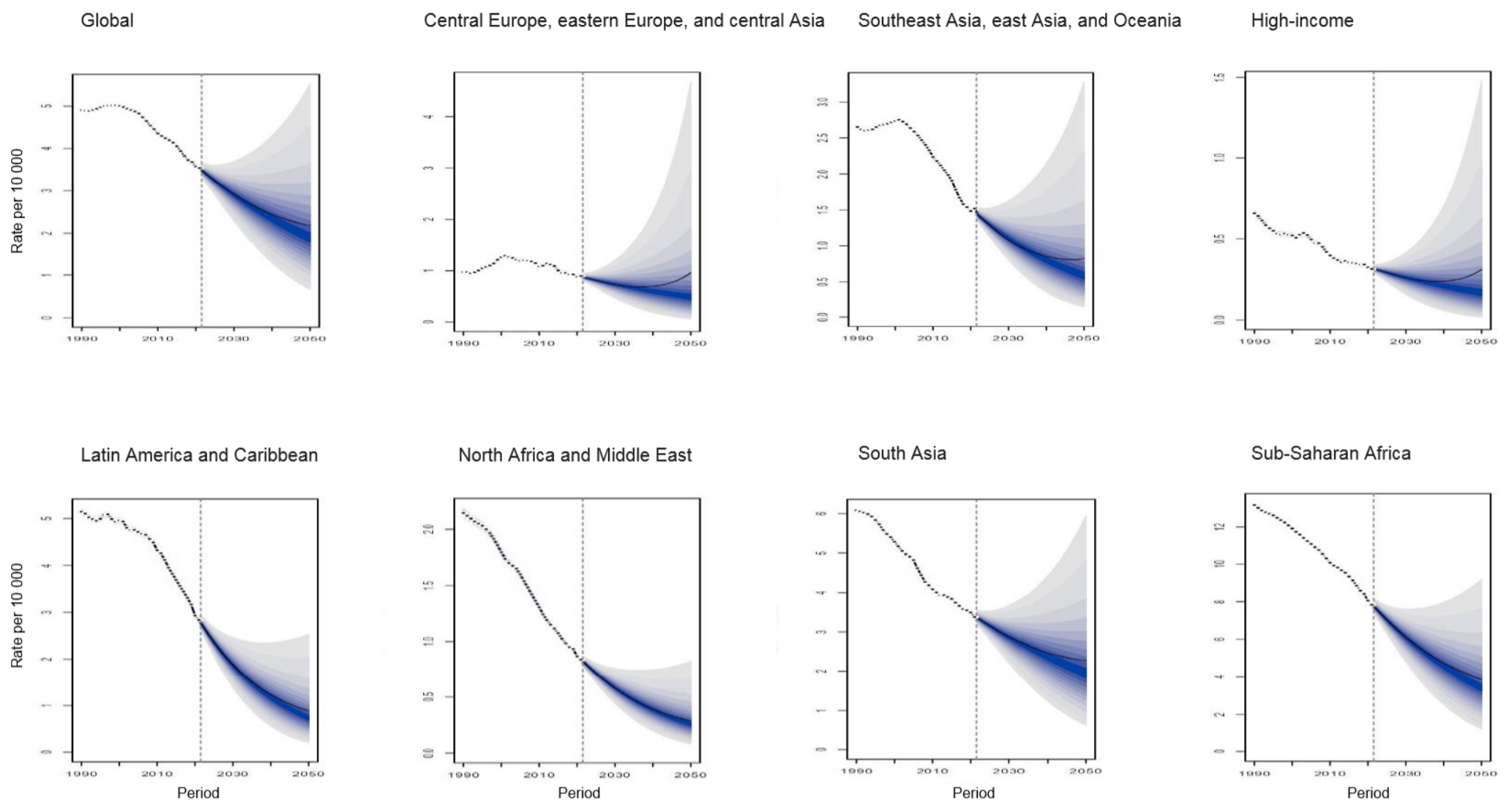


Figure S10 Forecasts of specific death rates attributable to neonatal sepsis and other neonatal infections among children under-5 years of age, by super-regions, 2022–2050. Fan charts illustrate the spread of forecast distributions across the 5th to 95th percentiles, with shaded regions depicting the prediction intervals. The solid lines within these charts represent the predicted mean values, while the vertical dashed line marks the starting point of the forecast period.

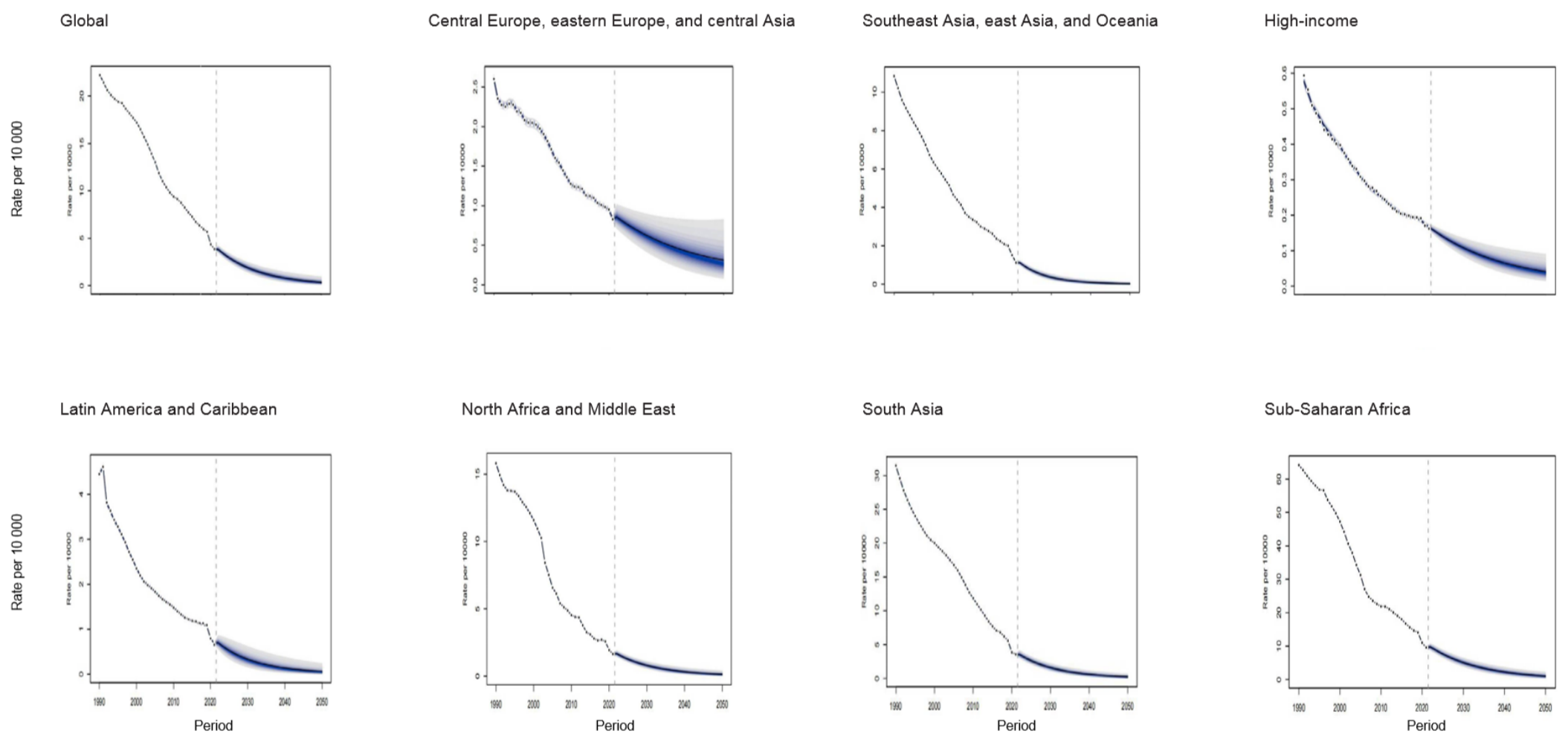


Figure S11 Forecasts of specific death rates attributable to other infectious diseases among children under-5 years of age, by super-regions, 2022–2050. Fan charts illustrate the spread of forecast distributions across the 5th to 95th percentiles, with shaded regions depicting the prediction intervals. The solid lines within these charts represent the predicted mean values, while the vertical dashed line marks the starting point of the forecast period.