

Figure S1 The flowchart of the study. ROC, receiver operating characteristic; GO, Gene Ontology; KEGG, Kyoto Encyclopedia of Genes and Genomes; GSEA, Gene Set Enrichment Analysis; TME, tumor micro environment.

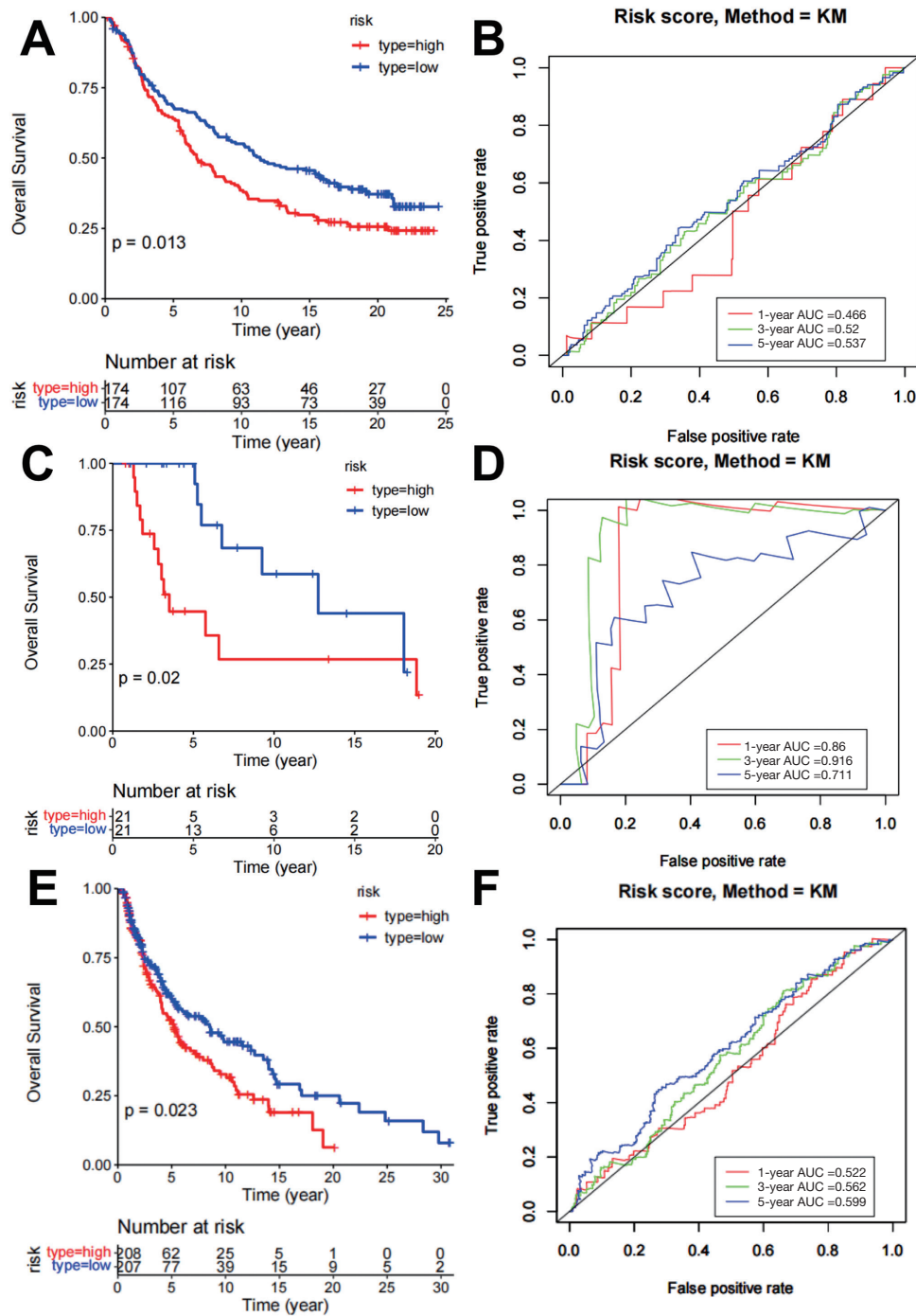


Figure S2 The risk-score model was validated in urothelial carcinoma and cutaneous melanoma data sets. (A, B) Survival and ROC curves for high- and low-risk patients were plotted in the urothelial carcinoma data set. (C, D) Survival curves and ROC curves for high- and low-risk patients in the cutaneous melanoma data set (which comprised 42 samples with immunotherapy data). (E, F) Survival and ROC curves for high- and low-risk patients in the cutaneous melanoma data set (which comprised 415 samples with no immunotherapy data). ROC, Receiver operating characteristics.