

Figure S1 Risk factors of infection in children with primary nephrotic syndrome. (A) Absolute count of lymphocyte of infection and non-infection PNS patients; (B) Percentage of $CD3^+$ T cells of infection and non-infection PNS patients; (C) Absolute count of $CD3^+$ T cells of infection and non-infection PNS patients; (D) Percentage of NK cells of infection and non-infection PNS patients; (E) Absolute count of NK cells of infection and non-infection PNS patients; (F) Percentage of B cells of infection and non-infection PNS patients; (G) Absolute count of B cells of infection and non-infection PNS patients; (H) Percentage of $CD8^+$ T cells of infection and non-infection PNS patients; (I) Absolute count of $CD8^+$ cells of infection and non-infection PNS patients; (J) Percentage of $CD4^+CD45RO^+$ T cells of infection and non-infection PNS patients; (K) Absolute count of $CD4^+CD45RO^+$ T cells of infection and non-infection PNS patients; (L) $CD4^+CD45RA^+/CD4^+CD45RO^+$ ratio of infection and non-infection PNS patients; (M) Percentage of T_{reg} of infection and non-infection PNS patients; (N) Percentage of T_C cells of infection and non-infection PNS patients; (O) Absolute count of T_C cells of infection and non-infection PNS patients; (P) Percentage of T_S cells of infection and non-infection PNS patients; (Q) Absolute count of T_S cells of infection and non-infection PNS patients; (R) T_C/T_S ratio of infection and non-infection PNS patients.

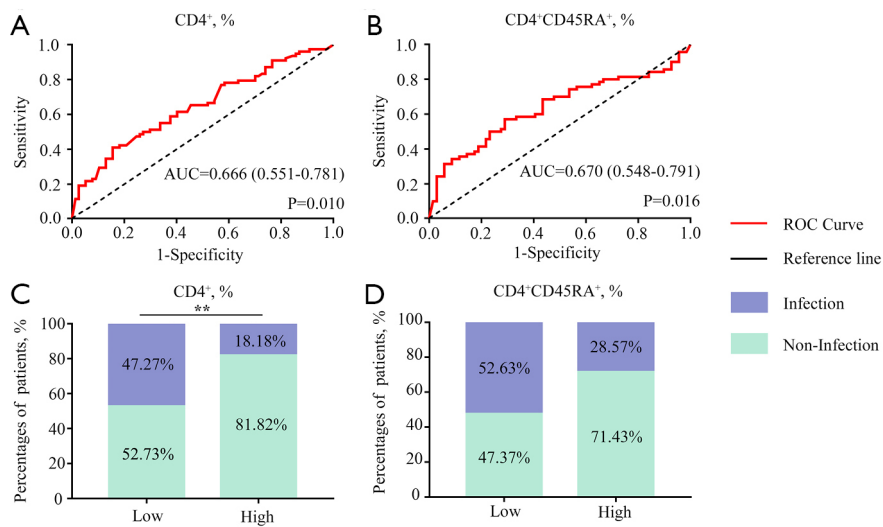


Figure S2 ROC curve analysis of lymphocyte subpopulations for predictability infection in children with primary nephrotic syndrome. (A) ROC curves for the correlation of CD4⁺ T cells percentage with infection in children with primary nephrotic syndrome. (B) ROC curves for the correlation of CD4⁺CD45RA⁺ T cells percentage with infection in children with primary nephrotic syndrome. (C) Comparison of the frequency of infection in PNS patients with different CD4⁺ T cells percentages levels. (D) Comparison of the frequency of infection in PNS patients with different CD4⁺CD45RA⁺ T cells percentages levels.